

KONSEP COMPANY

A Division of Allegheny York Co.



*Manufactures of
Quality Hydraulic and Pneumatic Packings & Seals*

Table of Contents

Sales Policy	II
Custom Made Seals on Demand	IV
Konsep Capabilities	V
Standard Materials	V
Vee Packing	1
Vee Packing Components–Inch.....	2
Vee Packing Components–Metric.....	14
AN Style Vee Packing (6225).....	15
Piston Cups	19
Fabric and Nitrile Piston Cups.....	20
Homogeneous Nitrile Piston Cups.....	23
Polyurethane Piston Cups.....	25
U-Cups	27
MA25 Symmetrical Urethane U-Cups–Metric.....	28
MA28 Urethane Piston U-Cups–Metric.....	28
MA30 Urethane Rod U-Cups–Metric.....	28
US-Symmetrical Urethane U-Cups–Inch.....	29
Nitrile U-Cups–Inch.....	29
Fabric Reinforced Nitrile U-Cups–Inch.....	30
Back-up Rings	31
Hytrel® Backup Rings–Inch.....	32
Nylon Backup Rings and Shims.....	33
Hytrel® Backup Rings–Metric.....	34
Wearbands	37
Nylon Wearband Formulas.....	38
Nylon Wearbands–Inch & Metric.....	38
Wipers	39
Non-Standard Wipers.....	40
Telescoping Cylinder Wipers.....	41
W Packing	43
W Packing Center Ring.....	44
W Packing Flat Backed.....	44
Bearings	45
Nylon Rod Bearings.....	46
Stepped Nylon Rod Bearings.....	48
Seal Retainers	49
MAILHOT® Seal Retainers.....	50

SALES POLICY

OPENING AN ACCOUNT WITH KONSEP CO.

1. Request a credit application by phone or fax.
 2. Complete our form and return it to us. Please allow processing time of 1 to 2 weeks.
 3. We will advise you by mail or phone of your credit limit and your account number.
- Additional information may be obtained from our sales correspondents.

ORDERING FROM KONSEP CO.

24 hour Fax: **1-866-345-7325** International: **(+1)-717-266-6371**
Order Desk: **1-866-737-7325** International: **(+1)-717-266-6180**

Sales Office: Konsep Co., P.O. Box 257, Emigsville, PA 17318-257 USA

Distribution: Konsep Co., 3995 N. George St., Manchester, PA 17345-9202 USA

Order Desk Hours of Operation: Monday to Friday 7:30 AM to 5:00 PM E.S.T.

Electronic orders are handled at once. Faxing your order guarantees that we understand the part number and reduces unnecessary errors. Customized Fax order forms are available. Please check with our sales correspondents.

MINIMUM ORDER

Order Minimum	\$ 50.00 Net (U.S. Dollars)
Line Minimum	\$ 10.00 Net (U.S. Dollars)
Set Minimum	\$ 25.00 Net (U.S. Dollars)

QUOTATIONS FOR NON-CATALOG ITEMS

We will be happy to quote special sizes requiring tooling. In some cases, we are able to deliver in as little as 3-4 weeks. Contact our sales office for details.

RETURNS

Before any item can be returned, a Return Material Authorization (RMA) number must be obtained from our sales correspondents. This must appear on all packages near the address label. Returned packages not having an RMA number will be refused and returned to sender. Parts returned are subject to a 20% restocking charge, must be in resalable condition, and arrive at our plant within 30 days of purchase. Special items (non-catalog), may not be returned. Machined or split items are not returnable. Please return all items to:

<p>KONSEP COMPANY 3995 North George Street Ext'd Manchester, PA., USA 17345-9202</p>
--



CREDIT POLICY

Our payment terms for all open accounts are 1% 10, net 30 days. Accounts that reach 45 days past due from the invoice date will automatically be changed to a C.O.D. account adding all unpaid invoices. Accounts that reach 60 days past due from the invoice date will automatically be changed to a credit hold status, until the past due amount is received. You will be notified if your account status has changed and if orders are being held. To expedite your order we also accept the following credit cards for payment: Visa®, MasterCard®, and American Express®.

WARRANTY

All goods sold hereunder are warranted to be free from defects in material and workmanship. These express warranties are in lieu of and exclude all other warranties, expressed or implied. Konsep Co. recommends that all designs be tested in prototype prior to production due to the many variables involved in sealing. Our liability for breach of any and all warranties is limited to refunding our invoice price of the products, or at our option, replacement of the material free of charge, including transportation charges, but not on the cost of installation. The sale of our products under any other warranty or guarantee, expressed or implied, is not authorized by the company. All technical advice, services and recommendations rendered by Konsep Co. personnel are gratis. They are based on technical data which the seller believes to be reliable, and are intended to be used by persons having skill and know-how, at their own discretion and risk.

The information in this publication is based on the best sources and pricing available at time of publication and is furnished for informational use only. Konsep Co. has attempted to make it both accurate and useful, and is subject to change without notice based on material costs and/or fluctuation of currency exchange rates. Also, it is impossible to predict future pricing, or to test packings and sealing devices under all the conditions to which they might be exposed in the field. It is important, therefore, that packing and sealing devices be tested under conditions that duplicate the service conditions before the seal design is finalized.

NOTICE Konsep Company assumes no responsibility for typographical errors, results obtained, damages or losses incurred from their use by buyer in whole or in part. Equipment manufacturers' part numbers are used for reference purposes only. We do not imply that any part shown is the product of these manufacturers. Trademarks are the property of their respective owners.

NOTE: \$50.00 FEE FOR RETURNED CHECKS

Custom Made Seals on Demand

Konsep Co. will manufacture wipers, seals, backup rings, bearings, and guide rings to meet your demands using advanced rapid prototyping technology. Parts can be made from over 100 profiles for same-day delivery using our extensive inventory of available materials. Our Engineering team will design the part to fit your requirements and supply a drawing and quotation for your approval prior to manufacturing.

Size Capabilities:

Inch	Metric
5/16" I.D. to 23-1/2" O.D.	8 mm I.D. to 600mm O.D.

What we need from you:

Part Profile: Call our engineering department for available profiles.

Dimensions: We prefer metal dimensions (actual gland dimensions) If you do not supply gland dimensions, we will manufacture the part to *your* nominal part dimensions.

Material: Tell us what material you would like the part to be made from. If we don't have that material in stock, we will suggest alternatives or order the preferred material.

Operating Conditions: Give us as much information as you have about temperature, pressure, speed, and any other operating conditions the part will be used in.

- Temperature
- Application
- Media (Fluid)
- Pressure
- Speed

Larger Quantity items:

If the part you need becomes a production part, we have the capability of injection molding or compression molding the part in larger quantities at lower prices. Contact our Engineering department for more information.

Konsep Capabilities

Compression Press

Press	Platen Size	Tonnage
1	14" x 14"	250
2	14" x 14"	250
3	14" x 14"	250
4	14" x 14"	250
6	14" x 14"	250
7	14" x 14"	250
8	14" x 14"	250
9	14" x 14"	250
10	24" x 24"	300
11	24" x 24"	300
12	24" x 24"	300
14	36" x 36"	2500

Injection Press

Machine #	Manufacture	Tonnage(mm/us)
#1	Nissei	100/110
#2	Nissei	100/110
#3	Nissei	120/132
#4	Kawaguchi	80/88
#5	Nissei	360/400

Machine Shop

1/4"-24" mold production capacity with
Auto-tool, Bridgeport® CNC Machining Center

CNC Machines

Machine	CNC Machines	Capability
DMH	Assorted	23½"
Duro Turn	Metal & Hard plastics	10"
Live Tooling		
Duro Turn	Metal & Hard plastics	13"

Type

Clicker
Knife trimmer
Granulator
Lathe
Mill

Other Quantity

3
2
4
2
2

Uses

trim & gaskets
trimming
recycle plastic
machining
machining

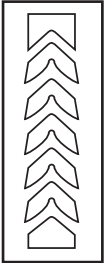
Standard Materials

Compound Number	Temperature Range (°F)	Description
N701	-45/+250	70 A Durometer Nitrile
N801	-45/+250	80 A Durometer Nitrile
N901	-45/+250	90 A Durometer Nitrile
NI001	-45/+250	55 D Durometer Nitrile
V601	-25/+450	60 A Durometer Fluorocarbon Elastomer
V751	-25/+450	75 A Durometer Fluorocarbon Elastomer
V901	-25/+450	90 A Durometer Fluorocarbon Elastomer
FN101	-45/+250	High Tensile Fabric Reinforced Nitrile
FN102	-65/+250	High Tensile Fabric Reinforced Nitrile, Rock Hard Cure
FV101	-25/+300	High Tensile Fabric Reinforced Fluorocarbon Elastomer
P901	-65/+200	90 A Durometer Polyurethane
H901	-65/+225	90 A Durometer Polyester Elastomer
NY33G	-40/+275	33% Glass Reinforced Nylon Heat Stabilized Exceptional Extrusion Resistance
HNBR	-35/+300	Highly Saturated Nitrile

Vee Packing



..... Vee Packing Components - Inch 2



..... Vee Packing Components - Metric 14



..... AN Style Vee Packing (6225) 15

Note: Special Charges

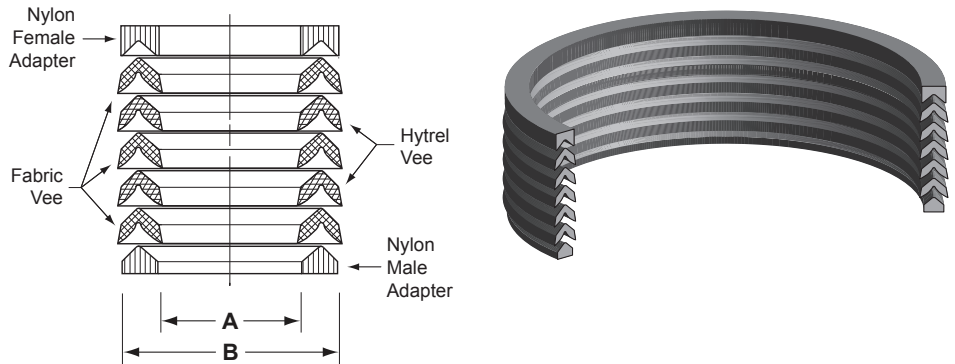
- A. Splitting Charge - \$0.15 per ring.
- B. Cut Downs - \$1.00 per ring.
- C. Charge for Assembling Sets - \$0.20 each.

Vee Packing Components - Inch

Suffix Listing

* Add suffix to Size Number to specify component Part Number

- FN = Nylon Female Adapter
- FF = Fabric Female Adapter
- VF = Fabric Vee
- VH = Hytrel® Vee
- VB = Homogeneous Nitrile Vee
- MN = Nylon Male Adapter
- MF = Fabric Male Adapter



The next few pages contain a listing of molded vee packing. Most of these sizes correspond to the stack height chart below. Glass filled nylon adapters (for extrusion resistance) and hytrel® vees (for dry wiping action) are standard in most sizes under 10" O.D. Also available, are plus and minus adapters for meeting your nonstandard stack height requirements.

NOTE: Not all components are available in all sizes. Please contact our sales department for more information.

Standard material: Cotton reinforced nitrile rubber is compatible with most petroleum based fluids including gasoline, and can be used in constant temperatures to +250°F.

Hytrel® is an engineered thermoplastic with a low friction coefficient, and high abrasion resistance. It works well when alternated between fabric and rubber vees. Up to three Hytrel® vees may be used in a set or by themselves.

Cotton reinforced viton will work in constant temperatures to +300°F, with good resistance to swell.

Glass filled nylon adapters are compatible with most fluids and will withstand constant temperatures up to 275°F, making them suitable for use with viton and duck for semi-high temperature and fluid applications. Vitex (Viton and nomex; a very high temperature fabric containing kevlar and fiberglass) can be used at constant temperatures up to 400°F.

Contact our sales office with application for material recommendations.

Stack Height Chart

Cross Section (frac.)	Cross Section (dec.)	Height Per Vee	2 Vee Rings	3 Vee Rings	4 Vee Rings	5 Vee Rings	6 Vee Rings
3/16	0.187	0.109	0.532	0.641	0.750	0.859	0.968
1/4	0.250	0.125	0.592	0.718	0.843	0.968	1.093
.275	0.275	0.138	0.640	0.781	0.921	1.062	1.203
5/16	0.312	0.156	0.687	0.843	1.000	1.156	1.312
3/8	0.375	0.187	0.781	0.968	1.156	1.343	1.531
7/16	0.437	0.218	0.875	1.093	1.312	1.531	1.750
1/2	0.500	0.250	0.968	1.218	1.468	1.718	1.968
5/8	0.625	0.312	1.156	1.468	1.781	2.093	2.406
3/4	0.750	0.375	1.343	1.718	2.093	2.468	2.843

Recommended Number of Vees per Set

The information shown in the following charts is for general guidance only. Because of the many variables in design and application, no inflexible formula for determining the number of vees can be prepared. Therefore, this chart should be used as a guide, and testing should be done prior to implementation. Furthermore, pressure ratings can be increased by using machined adapters with close tolerances and minimal extrusion gaps.

Diameter of Rod	up to 1000 psi		1000 to 2500 psi		2500 to 6000 psi	
	Cross Section	Pressure Rings	Cross Section	Pressure Rings	Cross Section	Pressure Rings
1" to 3"	1/4"	4	1/4"	5	1/4"	6
3" to 6"	1/4"	4	1/4"	5	3/8"	6
6" to 8"	3/8"	4	3/8"	5	1/2"	6
8" to 14"	1/2"	4	1/2"	5	1/2"	6
14" to 24"	5/8"	4	5/8"	5	5/8"	6
24" to 36"	3/4"	4	3/4"	5	3/4"	6

Vee Packing Components - Inch

Size #	ID	OD	Suffix*								1 - 99	100 - 249	250 - 499	500 - 999	1000 +		
			VF	VH	FN	MN	VB	MF	FF	**							
.187 CS																	
VP250625	0.250	0.625	x										\$1.39	\$1.31	\$1.22	\$1.14	\$1.06
VP375750	0.375	0.750	x		x	x							\$1.39	\$1.31	\$1.22	\$1.14	\$1.06
VP437812	0.437	0.812	x										\$1.40	\$1.32	\$1.23	\$1.15	\$1.06
VP500875	0.500	0.875	x	x	x	x		x		x			\$1.40	\$1.32	\$1.23	\$1.15	\$1.06
VP562937	0.562	0.937	x		x	x							\$1.47	\$1.38	\$1.29	\$1.21	\$1.12
VP6251000	0.625	1.000	x	x	x	x				x			\$1.45	\$1.36	\$1.28	\$1.19	\$1.10
VP7501125	0.750	1.125	x	x	x	x				x			\$1.45	\$1.36	\$1.28	\$1.19	\$1.10
VP8121187	0.812	1.187	x										\$1.46	\$1.37	\$1.28	\$1.20	\$1.11
VP8751250	0.875	1.250	x	x	x	x				x			\$1.46	\$1.37	\$1.28	\$1.20	\$1.11
VP10001375	1.000	1.375	x	x	x	x							\$1.45	\$1.36	\$1.28	\$1.19	\$1.10
VP11251500	1.125	1.500	x		x	x							\$1.46	\$1.37	\$1.28	\$1.20	\$1.11
VP11871562	1.187	1.562	x		x	x							\$1.49	\$1.40	\$1.31	\$1.22	\$1.13
VP12501625	1.250	1.625	x		x	x							\$1.49	\$1.40	\$1.31	\$1.22	\$1.13
VP13751750	1.375	1.750	x	x	x	x							\$1.50	\$1.41	\$1.32	\$1.23	\$1.14
VP15001875	1.500	1.875	x	x	x	x				x			\$1.48	\$1.39	\$1.30	\$1.21	\$1.12
VP17502125	1.750	2.125	x	x	x	x							\$1.51	\$1.42	\$1.33	\$1.24	\$1.15
VP20002375	2.000	2.375	x	x	x	x							\$1.54	\$1.45	\$1.36	\$1.26	\$1.17
VP25002875	2.500	2.875	x		x	x							\$1.57	\$1.48	\$1.38	\$1.29	\$1.19
VP28753250	2.875	3.250					x			x			\$1.78	\$1.67	\$1.57	\$1.46	\$1.35
VP31253500	3.125	3.500			x	x				x			\$1.81	\$1.70	\$1.59	\$1.48	\$1.38
VP32503625	3.250	3.625	x		x	x							\$1.85	\$1.74	\$1.63	\$1.52	\$1.41
.196 CS (5mm)																	
VP394787	0.394	0.787					x						\$1.86	\$1.75	\$1.64	\$1.53	\$1.41
.218 CS																	
VP21252562	2.125	2.562	x	x						x	x		\$2.04	\$1.92	\$1.80	\$1.67	\$1.55
.237 CS (6mm)																	
VP21762650	2.176	2.650		x									\$2.12	\$1.99	\$1.87	\$1.74	\$1.61
VP26053078	2.605	3.078		x									\$2.67	\$2.51	\$2.35	\$2.19	\$2.03
.250 CS																	
VP187687	0.187	0.687		x							x		\$1.59	\$1.49	\$1.40	\$1.30	\$1.21
VP375875	0.375	0.875	x		x	x					x		\$1.49	\$1.40	\$1.31	\$1.22	\$1.13
VP5001000	0.500	1.000	x	x	x	x					x		\$1.39	\$1.31	\$1.22	\$1.14	\$1.06
VP6251125	0.625	1.125	x	x	x	x					x		\$1.39	\$1.31	\$1.22	\$1.14	\$1.06
VP6871187	0.687	1.187	x		x	x							\$1.56	\$1.47	\$1.37	\$1.28	\$1.19
VP7501250	0.750	1.250	x	x	x	x		x	x	x			\$1.39	\$1.31	\$1.22	\$1.14	\$1.06
VP8121312	0.812	1.312	x	x	x	x							\$1.41	\$1.33	\$1.24	\$1.16	\$1.07
VP8751375	0.875	1.375	x	x	x	x					x		\$1.40	\$1.32	\$1.23	\$1.15	\$1.06
VP10001500	1.000	1.500	x	x	x	x					x		\$1.37	\$1.29	\$1.21	\$1.12	\$1.04
VP10621562	1.062	1.562	x		x	x							\$1.75	\$1.65	\$1.54	\$1.44	\$1.33
VP11251625	1.125	1.625	x	x	x	x					x		\$1.40	\$1.32	\$1.23	\$1.15	\$1.06
VP11871687	1.187	1.687	x					x	x				\$1.49	\$1.40	\$1.31	\$1.22	\$1.13
VP12501750	1.250	1.750	x	x	x	x					x		\$1.40	\$1.32	\$1.23	\$1.15	\$1.06
VP13121812	1.312	1.812	x		x	x							\$1.56	\$1.47	\$1.37	\$1.28	\$1.19
VP13751875	1.375	1.875	x	x	x	x					x		\$1.49	\$1.40	\$1.31	\$1.22	\$1.13

* Add suffix to Size Number to specify component Part Number
 FN = Nylon Female Adapter

FF = Fabric Female Adapter
 VF = Fabric Vee
 VH = Hytrel Vee

VB = Homogeneous Nitrile Vee
 MN = Nylon Male Adapter
 MF = Fabric Male Adapter

**Other tools are available.
 Call customer service for details.

Vee Packing Components - Inch

Size #	ID	OD	Suffix*								1-99	100-249	250-499	500-999	1000+	
			VF	VH	FN	MN	VB	MF	FF	**						
.250 CS																
VP14371937	1.437	1.937	x									\$1.51	\$1.42	\$1.33	\$1.24	\$1.15
VP15002000	1.500	2.000	x	x	x	x			x		x	\$1.40	\$1.32	\$1.23	\$1.15	\$1.06
VP15622062	1.562	2.062	x		x	x						\$1.86	\$1.75	\$1.64	\$1.53	\$1.41
VP16252125	1.625	2.125	x	x	x	x						\$1.44	\$1.35	\$1.27	\$1.18	\$1.09
VP17502250	1.750	2.250	x	x	x	x			x		x	\$1.47	\$1.38	\$1.29	\$1.21	\$1.12
VP18752375	1.875	2.375	x	x	x	x						\$1.50	\$1.41	\$1.32	\$1.23	\$1.14
VP19372437	1.937	2.437		x								\$1.54	\$1.45	\$1.36	\$1.26	\$1.17
VP20002500	2.000	2.500	x	x	x	x					x	\$1.49	\$1.40	\$1.31	\$1.22	\$1.13
VP21252625	2.125	2.625	x	x	x	x						\$1.51	\$1.42	\$1.33	\$1.24	\$1.15
VP21872687	2.187	2.687		x								\$2.27	\$2.13	\$2.00	\$1.86	\$1.73
VP22502750	2.250	2.750	x	x	x	x	x				x	\$1.54	\$1.45	\$1.36	\$1.26	\$1.17
VP23752875	2.375	2.875	x	x	x	x						\$1.55	\$1.46	\$1.36	\$1.27	\$1.18
VP25003000	2.500	3.000	x	x	x	x					x	\$1.56	\$1.47	\$1.37	\$1.28	\$1.19
VP25253025	2.525	3.025	x		x						x	\$2.34	\$2.20	\$2.06	\$1.92	\$1.78
VP26253125	2.625	3.125	x	x	x	x					x	\$1.65	\$1.55	\$1.45	\$1.35	\$1.25
VP27003200	2.700	3.200									x	\$2.41	\$2.27	\$2.12	\$1.98	\$1.83
VP27503250	2.750	3.250	x	x	x	x			x	x	x	\$1.66	\$1.56	\$1.46	\$1.36	\$1.26
VP28753375	2.875	3.375	x		x	x						\$1.74	\$1.64	\$1.53	\$1.43	\$1.32
VP30003500	3.000	3.500	x	x	x	x					x	\$1.79	\$1.68	\$1.58	\$1.47	\$1.36
VP31253625	3.125	3.625	x									\$2.47	\$2.32	\$2.17	\$2.03	\$1.88
VP32503750	3.250	3.750	x	x	x	x					x	\$1.87	\$1.76	\$1.65	\$1.53	\$1.42
VP33753875	3.375	3.875	x	x	x	x						\$1.94	\$1.82	\$1.71	\$1.59	\$1.47
VP35004000	3.500	4.000	x	x	x	x					x	\$2.01	\$1.89	\$1.77	\$1.65	\$1.53
VP35204020	3.520	4.020	x	x	x						x	\$2.78	\$2.61	\$2.45	\$2.28	\$2.11
VP36904190	3.690	4.190	x	x	x	x						\$2.93	\$2.75	\$2.58	\$2.40	\$2.23
VP37504250	3.750	4.250	x	x	x	x						\$2.13	\$2.00	\$1.87	\$1.75	\$1.62
VP38754375	3.875	4.375	x		x	x						\$2.25	\$2.12	\$1.98	\$1.85	\$1.71
VP40004500	4.000	4.500	x	x	x	x	x				x	\$2.18	\$2.05	\$1.92	\$1.79	\$1.66
VP41254625	4.125	4.625	x	x	x	x					x	\$2.29	\$2.15	\$2.02	\$1.88	\$1.74
VP42504750	4.250	4.750	x	x	x	x					x	\$2.57	\$2.42	\$2.26	\$2.11	\$1.95
VP43754875	4.375	4.875	x		x	x						\$2.89	\$2.72	\$2.54	\$2.37	\$2.20
VP44374937	4.437	4.937	x		x	x	x				x	\$3.09	\$2.90	\$2.72	\$2.53	\$2.35
VP45005000	4.500	5.000	x	x	x	x					x	\$2.59	\$2.43	\$2.28	\$2.12	\$1.97
VP45805080	4.580	5.080	x	x	x						x	\$3.18	\$2.99	\$2.80	\$2.61	\$2.42
VP46255125	4.625	5.125		x								\$4.03	\$3.79	\$3.55	\$3.30	\$3.06
VP47505250	4.750	5.250	x	x	x	x						\$3.21	\$3.02	\$2.82	\$2.63	\$2.44
VP50005500	5.000	5.500	x	x	x	x					x	\$3.23	\$3.04	\$2.84	\$2.65	\$2.45
VP50625562	5.062	5.562	x	x	x	x						\$3.38	\$3.18	\$2.97	\$2.77	\$2.57
VP51255625	5.125	5.625	x									\$3.41	\$3.21	\$3.00	\$2.80	\$2.59
VP52505750	5.250	5.750	x	x	x	x						\$3.43	\$3.22	\$3.02	\$2.81	\$2.61
VP54455945	5.445	5.945	x	x	x						x	\$3.58	\$3.37	\$3.15	\$2.94	\$2.72
VP55006000	5.500	6.000	x	x	x	x					x	\$3.53	\$3.32	\$3.11	\$2.89	\$2.68
VP57506250	5.750	6.250	x		x	x						\$3.55	\$3.34	\$3.12	\$2.91	\$2.70
VP60006500	6.000	6.500	x	x	x	x	x				x	\$3.55	\$3.34	\$3.12	\$2.91	\$2.70
VP60056505	6.005	6.505	x									\$3.61	\$3.39	\$3.18	\$2.96	\$2.74
VP62506750	6.250	6.750	x		x	x					x	\$4.03	\$3.79	\$3.55	\$3.30	\$3.06
VP64456945	6.445	6.945	x	x	x						x	\$3.76	\$3.53	\$3.31	\$3.08	\$2.86
VP65007000	6.500	7.000	x	x	x	x					x	\$3.78	\$3.55	\$3.33	\$3.10	\$2.87
VP67507250	6.750	7.250	x	x	x	x						\$4.39	\$4.13	\$3.86	\$3.60	\$3.34
VP70007500	7.000	7.500	x	x	x	x					x	\$4.33	\$4.07	\$3.81	\$3.55	\$3.29

* Add suffix to Size Number to specify component Part Number

VF = Fabric Female Adapter
 VF = Fabric Vee
 FN = Nylon Female Adapter
 VH = Hytrel Vee

VB = Homogeneous Nitrile Vee
 MN = Nylon Male Adapter
 MF = Fabric Male Adapter

**Other tools are available.
 Call customer service for details.

Vee Packing Components - Inch

Size #	ID	OD	Suffix*								1-99	100-249	250-499	500-999	1000+		
			VF	VH	FN	MN	VB	MF	FF	**							
.250 CS																	
VP70087508	7.008	7.508	x										\$4.60	\$4.32	\$4.05	\$3.77	\$3.50
VP72507750	7.250	7.750	x		x	x							\$4.78	\$4.49	\$4.21	\$3.92	\$3.63
VP74457945	7.445	7.945	x	x	x							x	\$4.80	\$4.51	\$4.22	\$3.94	\$3.65
VP75008000	7.500	8.000	x		x	x							\$4.68	\$4.40	\$4.12	\$3.84	\$3.56
VP77508250	7.750	8.250	x										\$4.89	\$4.60	\$4.30	\$4.01	\$3.72
VP80008500	8.000	8.500	x	x	x	x	x					x	\$4.89	\$4.60	\$4.30	\$4.01	\$3.72
VP80098509	8.009	8.509	x										\$5.08	\$4.78	\$4.47	\$4.17	\$3.86
VP81258625	8.125	8.625	x		x	x							\$5.38	\$5.06	\$4.73	\$4.41	\$4.09
VP85009000	8.500	9.000	x								x		\$5.38	\$5.06	\$4.73	\$4.41	\$4.09
VP90009500	9.000	9.500	x		x	x							\$6.31	\$5.93	\$5.55	\$5.17	\$4.80
VP92509750	9.250	9.750	x										\$6.63	\$6.23	\$5.83	\$5.44	\$5.04
VP93759875	9.375	9.875	x									x	\$6.77	\$6.36	\$5.96	\$5.55	\$5.15
VP950010000	9.500	10.000	x			x						x	\$7.18	\$6.75	\$6.32	\$5.89	\$5.46
VP1275013250	12.750	13.250	x										\$10.47	\$9.84	\$9.21	\$8.59	\$7.96
.257 CS																	
VP17502265	1.750	2.265	x	x	x	x						x	\$2.18	\$2.05	\$1.92	\$1.79	\$1.66
VP18752390	1.875	2.390	x	x	x	x							\$2.30	\$2.16	\$2.02	\$1.89	\$1.75
VP20002515	2.000	2.515	x									x	\$2.36	\$2.22	\$2.08	\$1.94	\$1.79
VP21252640	2.125	2.640	x	x	x	x							\$2.49	\$2.34	\$2.19	\$2.04	\$1.89
.260 CS																	
VP27503270	2.750	3.270	x	x	x					x	x		\$2.97	\$2.79	\$2.61	\$2.44	\$2.26
VP30003520	3.000	3.520	x	x	x	x		x	x	x			\$3.06	\$2.88	\$2.69	\$2.51	\$2.33
VP32503770	3.250	3.770	x		x						x		\$3.19	\$3.00	\$2.81	\$2.62	\$2.42
VP35004020	3.500	4.020	x		x	x							\$3.32	\$3.12	\$2.92	\$2.72	\$2.52
.262 CS																	
VP40004525	4.000	4.525	x	x	x								\$2.65	\$2.49	\$2.33	\$2.17	\$2.01
VP50005525	5.000	5.525	x	x	x								\$3.38	\$3.18	\$2.97	\$2.77	\$2.57
VP60006525	6.000	6.525	x	x	x								\$3.79	\$3.56	\$3.34	\$3.11	\$2.88
VP70007525	7.000	7.525	x	x	x								\$4.64	\$4.36	\$4.08	\$3.80	\$3.53
VP80008525	8.000	8.525	x	x	x						x		\$5.33	\$5.01	\$4.69	\$4.37	\$4.05
.265 CS																	
VP25803110	2.580	3.110	x	x	x	x						x	\$1.74	\$1.64	\$1.53	\$1.43	\$1.32
VP35804110	3.580	4.110	x	x	x							x	\$2.45	\$2.30	\$2.16	\$2.01	\$1.86
VP45805110	4.580	5.110			x							x	\$3.39	\$3.19	\$2.98	\$2.78	\$2.58
VP81258655	8.125	8.655	x										\$5.59	\$5.25	\$4.92	\$4.58	\$4.25
.268 CS																	
VP93759910	9.375	9.910	x										\$7.69	\$7.23	\$6.77	\$6.31	\$5.84
.275 CS																	
VP18122363	1.812	2.363									x		\$2.48	\$2.33	\$2.18	\$2.03	\$1.88
VP19702520	1.970	2.520	x									x	\$2.39	\$2.25	\$2.10	\$1.96	\$1.82
VP24503000	2.450	3.000	x		x	x						x	\$2.42	\$2.27	\$2.13	\$1.98	\$1.84
VP29503500	2.950	3.500	x	x	x	x						x	\$2.47	\$2.32	\$2.17	\$2.03	\$1.88
VP29703520	2.970	3.520	x									x	\$2.48	\$2.33	\$2.18	\$2.03	\$1.88
VP34504000	3.450	4.000	x		x	x						x	\$2.58	\$2.43	\$2.27	\$2.12	\$1.96

* Add suffix to Size Number to specify component Part Number
 FN = Nylon Female Adapter

FF = Fabric Female Adapter
 VF = Fabric Vee
 VH = Hytrel Vee

VB = Homogeneous Nitrile Vee
 MN = Nylon Male Adapter
 MF = Fabric Male Adapter

**Other tools are available.
 Call customer service for details.

Vee Packing Components - Inch

Size #	ID	OD	Suffix*								1-99	100-249	250-499	500-999	1000+	
			VF	VH	FN	MN	VB	MF	FF	**						
.275 CS																
VP39504500	3.950	4.500	x	x	x	x					x	\$2.61	\$2.45	\$2.30	\$2.14	\$1.98
VP39704520	3.970	4.520	x	x							x	\$2.87	\$2.70	\$2.53	\$2.35	\$2.18
VP42004750	4.200	4.750	x	x	x						x	\$3.72	\$3.50	\$3.27	\$3.05	\$2.83
VP44505000	4.450	5.000	x		x	x						\$3.79	\$3.56	\$3.34	\$3.11	\$2.88
VP47005250	4.700	5.250	x		x			x			x	\$3.81	\$3.58	\$3.35	\$3.12	\$2.90
VP49505500	4.950	5.500	x	x	x	x	x				x	\$3.84	\$3.61	\$3.38	\$3.15	\$2.92
VP49705520	4.970	5.520	x	x							x	\$3.86	\$3.63	\$3.40	\$3.17	\$2.93
VP54506000	5.450	6.000	x		x							\$4.13	\$3.88	\$3.63	\$3.39	\$3.14
VP54756025	5.475	6.025	x									\$4.15	\$3.90	\$3.65	\$3.40	\$3.15
VP59506500	5.950	6.500	x	x	x	x	x				x	\$4.27	\$4.01	\$3.76	\$3.50	\$3.25
VP59706520	5.970	6.520	x	x							x	\$4.27	\$4.01	\$3.76	\$3.50	\$3.25
VP64507000	6.450	7.000	x		x	x					x	\$4.83	\$4.54	\$4.25	\$3.96	\$3.67
VP67007250	6.700	7.250	x		x						x	\$5.16	\$4.85	\$4.54	\$4.23	\$3.92
VP69507500	6.950	7.500	x	x	x	x	x				x	\$5.17	\$4.86	\$4.55	\$4.24	\$3.93
VP69707520	6.970	7.520	x	x							x	\$5.23	\$4.92	\$4.60	\$4.29	\$3.97
VP79508500	7.950	8.500	x	x	x	x	x				x	\$5.59	\$5.25	\$4.92	\$4.58	\$4.25
VP79708520	7.970	8.520	x	x							x	\$5.61	\$5.27	\$4.94	\$4.60	\$4.26
VP89509500	8.950	9.500	x		x			x			x	\$6.29	\$5.91	\$5.54	\$5.16	\$4.78
VP91259675	9.125	9.675	x								x	\$6.55	\$6.16	\$5.76	\$5.37	\$4.98
VP92409790	9.240	9.790	x					x				\$6.78	\$6.37	\$5.97	\$5.56	\$5.15
VP1047011020	10.470	11.020	x									\$7.76	\$7.29	\$6.83	\$6.36	\$5.90
VP1195012500	11.950	12.500	x							x		\$8.81	\$8.28	\$7.75	\$7.22	\$6.70
.281 CS																
VP375937	0.375	0.937	x									\$1.59	\$1.49	\$1.40	\$1.30	\$1.21
VP11871750	1.187	1.750	x									\$2.18	\$2.05	\$1.92	\$1.79	\$1.66
VP20002562	2.000	2.562	x	x	x	x						\$2.57	\$2.42	\$2.26	\$2.11	\$1.95
VP40004562	4.000	4.562	x								x	\$3.85	\$3.62	\$3.39	\$3.16	\$2.93
VP50005562	5.000	5.562	x								x	\$4.79	\$4.50	\$4.22	\$3.93	\$3.64
VP65007062	6.500	7.062	x		x	x						\$5.11	\$4.80	\$4.50	\$4.19	\$3.88
.282 CS																
VP22002765	2.200	2.765	x	x	x	x						\$2.19	\$2.06	\$1.93	\$1.80	\$1.66
.285 CS																
VP24503020	2.450	3.020	x		x						x	\$2.86	\$2.69	\$2.52	\$2.35	\$2.17
VP32003770	3.200	3.770	x	x	x						x	\$3.12	\$2.93	\$2.75	\$2.56	\$2.37
VP37004270	3.700	4.270	x	x	x						x	\$3.47	\$3.26	\$3.05	\$2.85	\$2.64
.295 CS (7.5mm)																
VP15752165	1.575	2.165	x	x	x	x						\$2.53	\$2.38	\$2.23	\$2.07	\$1.92
VP16532244	1.653	2.244		x								\$2.72	\$2.55	\$2.39	\$2.23	\$2.07
VP17722362	1.772	2.362									x	\$2.75	\$2.59	\$2.42	\$2.26	\$2.09
VP19692559	1.969	2.559	x	x	x	x						\$2.84	\$2.67	\$2.50	\$2.33	\$2.16
VP23622953	2.362	2.953	x	x	x	x						\$2.93	\$2.75	\$2.58	\$2.40	\$2.23
VP25593150	2.559	3.150	x	x	x	x						\$3.05	\$2.87	\$2.68	\$2.50	\$2.32
VP27563347	2.756	3.347	x	x	x	x						\$3.09	\$2.90	\$2.72	\$2.53	\$2.35
VP29533543	2.953	3.543	x	x	x	x						\$3.14	\$2.95	\$2.76	\$2.57	\$2.39
VP31503740	3.150	3.740	x	x	x	x						\$3.23	\$3.04	\$2.84	\$2.65	\$2.45
VP33463937	3.346	3.937	x									\$3.29	\$3.09	\$2.90	\$2.70	\$2.50

* Add suffix to Size Number to specify component Part Number
 FN = Nylon Female Adapter

FF = Fabric Female Adapter
 VF = Fabric Vee
 VH = Hytrel Vee

VB = Homogeneous Nitrile Vee
 MN = Nylon Male Adapter
 MF = Fabric Male Adapter

**Other tools are available.
 Call customer service for details.

Vee Packing Components - Inch

Size #	ID	OD	Suffix*								1-99	100-249	250-499	500-999	1000+	
			VF	VH	FN	MN	VB	MF	FF	**						
.295 CS (7.5mm)																
VP35434134	3.543	4.134	x	x	x	x						\$3.47	\$3.26	\$3.05	\$2.85	\$2.64
.312 CS																
VP250875	0.250	0.875	x		x	x		x		x		\$1.71	\$1.61	\$1.50	\$1.40	\$1.30
VP6251250	0.625	1.250	x	x	x	x						\$1.75	\$1.65	\$1.54	\$1.44	\$1.33
VP7501375	0.750	1.375	x	x	x	x						\$1.75	\$1.65	\$1.54	\$1.44	\$1.33
VP8751500	0.875	1.500	x	x	x	x						\$1.75	\$1.65	\$1.54	\$1.44	\$1.33
VP10001625	1.000	1.625	x	x	x	x				x		\$1.75	\$1.65	\$1.54	\$1.44	\$1.33
VP11251750	1.125	1.750	x	x	x	x						\$1.76	\$1.65	\$1.55	\$1.44	\$1.34
VP12501875	1.250	1.875	x	x	x	x						\$1.76	\$1.65	\$1.55	\$1.44	\$1.34
VP13752000	1.375	2.000	x	x	x	x						\$1.78	\$1.67	\$1.57	\$1.46	\$1.35
VP15002125	1.500	2.125	x	x	x	x				x		\$1.79	\$1.68	\$1.58	\$1.47	\$1.36
VP16252250	1.625	2.250	x	x	x	x				x		\$1.81	\$1.70	\$1.59	\$1.48	\$1.38
VP17502375	1.750	2.375	x	x	x	x		x	x	x		\$1.83	\$1.72	\$1.61	\$1.50	\$1.39
VP18752500	1.875	2.500	x	x	x	x				x		\$1.85	\$1.74	\$1.63	\$1.52	\$1.41
VP20002625	2.000	2.625	x	x	x	x						\$1.88	\$1.77	\$1.65	\$1.54	\$1.43
VP21252750	2.125	2.750	x	x	x	x				x		\$1.91	\$1.80	\$1.68	\$1.57	\$1.45
VP22502875	2.250	2.875	x	x	x	x						\$1.93	\$1.81	\$1.70	\$1.58	\$1.47
VP23753000	2.375	3.000	x	x	x	x						\$1.97	\$1.85	\$1.73	\$1.62	\$1.50
VP25003125	2.500	3.125	x	x	x	x						\$2.04	\$1.92	\$1.80	\$1.67	\$1.55
VP26253250	2.625	3.250	x	x	x	x				x		\$2.11	\$1.98	\$1.86	\$1.73	\$1.60
VP27503375	2.750	3.375	x	x	x	x				x		\$2.19	\$2.06	\$1.93	\$1.80	\$1.66
VP28753500	2.875	3.500	x	x	x	x						\$2.47	\$2.32	\$2.17	\$2.03	\$1.88
VP30003625	3.000	3.625	x	x	x	x		x	x			\$2.53	\$2.38	\$2.23	\$2.07	\$1.92
VP31253750	3.125	3.750	x									\$3.09	\$2.90	\$2.72	\$2.53	\$2.35
VP32503875	3.250	3.875	x		x	x						\$2.97	\$2.79	\$2.61	\$2.44	\$2.26
VP33754000	3.375	4.000	x	x	x	x						\$2.99	\$2.81	\$2.63	\$2.45	\$2.27
VP35004125	3.500	4.125	x		x	x						\$3.06	\$2.88	\$2.69	\$2.51	\$2.33
VP36254250	3.625	4.250	x		x	x						\$3.47	\$3.26	\$3.05	\$2.85	\$2.64
VP37504375	3.750	4.375	x	x	x	x				x		\$3.16	\$2.97	\$2.78	\$2.59	\$2.40
VP38754500	3.875	4.500	x		x	x				x		\$3.53	\$3.32	\$3.11	\$2.89	\$2.68
VP40004625	4.000	4.625	x		x	x						\$3.58	\$3.37	\$3.15	\$2.94	\$2.72
VP42504875	4.250	4.875	x		x	x						\$3.64	\$3.42	\$3.20	\$2.98	\$2.77
VP43755000	4.375	5.000	x		x	x						\$3.70	\$3.48	\$3.26	\$3.03	\$2.81
VP45005125	4.500	5.125	x	x	x	x						\$3.79	\$3.56	\$3.34	\$3.11	\$2.88
VP46255250	4.625	5.250	x		x	x						\$4.17	\$3.92	\$3.67	\$3.42	\$3.17
VP47505375	4.750	5.375	x	x	x	x				x		\$3.77	\$3.54	\$3.32	\$3.09	\$2.87
VP50005625	5.000	5.625	x		x	x						\$4.07	\$3.83	\$3.58	\$3.34	\$3.09
VP53756000	5.375	6.000	x		x	x						\$4.36	\$4.10	\$3.84	\$3.58	\$3.31
VP56256250	5.625	6.250	x		x	x						\$4.99	\$4.69	\$4.39	\$4.09	\$3.79
VP57506375	5.750	6.375	x	x	x	x				x		\$4.89	\$4.60	\$4.30	\$4.01	\$3.72
VP60006625	6.000	6.625	x		x	x						\$5.25	\$4.94	\$4.62	\$4.31	\$3.99
VP62506875	6.250	6.875	x		x	x						\$5.38	\$5.06	\$4.73	\$4.41	\$4.09
VP63757000	6.375	7.000	x			x						\$5.44	\$5.11	\$4.79	\$4.46	\$4.13
VP66257250	6.625	7.250	x		x	x						\$5.79	\$5.44	\$5.10	\$4.75	\$4.40
VP67507375	6.750	7.375	x	x	x	x				x		\$5.48	\$5.15	\$4.82	\$4.49	\$4.16
VP73758000	7.375	8.000	x			x						\$6.39	\$6.01	\$5.62	\$5.24	\$4.86
VP75008125	7.500	8.125	x		x	x						\$6.75	\$6.35	\$5.94	\$5.54	\$5.13
VP77508375	7.750	8.375	x		x	x						\$6.89	\$6.48	\$6.06	\$5.65	\$5.24
VP91259750	9.125	9.750	x		x	x						\$7.33	\$6.89	\$6.45	\$6.01	\$5.57

* Add suffix to Size Number to specify component Part Number
 FN = Nylon Female Adapter

FF = Fabric Female Adapter
 VF = Fabric Vee
 VH = Hytrel Vee

VB = Homogeneous Nitrile Vee
 MN = Nylon Male Adapter
 MF = Fabric Male Adapter

**Other tools are available.
 Call customer service for details.

Vee Packing Components - Inch

Size #	ID	OD	Suffix*								1-99	100-249	250-499	500-999	1000+		
			VF	VH	FN	MN	VB	MF	FF	**							
.312 CS																	
VP937510000	9.375	10.000	x		x	x						x	\$7.71	\$7.25	\$6.78	\$6.32	\$5.86
.319 CS																	
VP79058543	7.905	8.543	x	x	x	x						x	\$7.11	\$6.68	\$6.26	\$5.83	\$5.40
.327 CS																	
VP18752530	1.875	2.530	x		x							x	\$2.49	\$2.34	\$2.19	\$2.04	\$1.89
.337 CS																	
VP29503625	2.950	3.625	x									x	\$3.57	\$3.36	\$3.14	\$2.93	\$2.71
.343 CS																	
VP20002687	2.000	2.687	x		x	x							\$2.79	\$2.62	\$2.46	\$2.29	\$2.12
.372 CS																	
VP47005445	4.700	5.445	x	x	x	x							\$4.85	\$4.56	\$4.27	\$3.98	\$3.69
.375 CS																	
VP7501500	0.750	1.500	x	x	x	x							\$1.89	\$1.78	\$1.66	\$1.55	\$1.44
VP8751625	0.875	1.625	x		x	x							\$2.05	\$1.93	\$1.80	\$1.68	\$1.56
VP10001750	1.000	1.750	x	x	x	x							\$2.05	\$1.93	\$1.80	\$1.68	\$1.56
VP11251875	1.125	1.875	x	x	x	x							\$2.23	\$2.10	\$1.96	\$1.83	\$1.69
VP12502000	1.250	2.000	x	x	x	x							\$2.23	\$2.10	\$1.96	\$1.83	\$1.69
VP13752125	1.375	2.125	x		x	x						x	\$2.31	\$2.17	\$2.03	\$1.89	\$1.76
VP15002250	1.500	2.250	x	x	x	x		x	x				\$2.31	\$2.17	\$2.03	\$1.89	\$1.76
VP16252375	1.625	2.375	x	x	x	x							\$2.45	\$2.30	\$2.16	\$2.01	\$1.86
VP17502500	1.750	2.500	x	x	x	x						x	\$2.45	\$2.30	\$2.16	\$2.01	\$1.86
VP17752525	1.775	2.525	x		x							x	\$2.67	\$2.51	\$2.35	\$2.19	\$2.03
VP18752625	1.875	2.625	x	x	x	x							\$2.59	\$2.43	\$2.28	\$2.12	\$1.97
VP20002750	2.000	2.750	x	x	x	x							\$2.59	\$2.43	\$2.28	\$2.12	\$1.97
VP21252875	2.125	2.875	x	x	x	x							\$2.74	\$2.58	\$2.41	\$2.25	\$2.08
VP21872937	2.187	2.937	x	x	x	x							\$2.79	\$2.62	\$2.46	\$2.29	\$2.12
VP22503000	2.250	3.000	x	x	x	x		x	x				\$2.79	\$2.62	\$2.46	\$2.29	\$2.12
VP22753025	2.275	3.025	x					x	x				\$3.18	\$2.99	\$2.80	\$2.61	\$2.42
VP23753125	2.375	3.125	x		x	x							\$2.83	\$2.66	\$2.49	\$2.32	\$2.15
VP24373187	2.437	3.187	x										\$3.57	\$3.36	\$3.14	\$2.93	\$2.71
VP25003250	2.500	3.250	x	x	x	x		x	x	x			\$2.88	\$2.71	\$2.53	\$2.36	\$2.19
VP26253375	2.625	3.375	x		x	x							\$3.13	\$2.94	\$2.75	\$2.57	\$2.38
VP26603410	2.660	3.410	x	x	x							x	\$3.60	\$3.38	\$3.17	\$2.95	\$2.74
VP27503500	2.750	3.500	x	x	x	x							\$3.15	\$2.96	\$2.77	\$2.58	\$2.39
VP27753525	2.775	3.525	x										\$3.31	\$3.11	\$2.91	\$2.71	\$2.52
VP28283578	2.828	3.578	x			x						x	\$3.85	\$3.62	\$3.39	\$3.16	\$2.93
VP28753625	2.875	3.625	x		x	x							\$3.46	\$3.25	\$3.04	\$2.84	\$2.63
VP30003750	3.000	3.750	x	x	x	x		x	x	x			\$3.46	\$3.25	\$3.04	\$2.84	\$2.63
VP31253875	3.125	3.875	x		x	x						x	\$3.58	\$3.37	\$3.15	\$2.94	\$2.72
VP32504000	3.250	4.000	x	x	x	x						x	\$3.67	\$3.45	\$3.23	\$3.01	\$2.79
VP33754125	3.375	4.125	x		x	x							\$3.88	\$3.65	\$3.41	\$3.18	\$2.95
VP35004250	3.500	4.250	x	x	x	x						x	\$3.99	\$3.75	\$3.51	\$3.27	\$3.03
VP36254375	3.625	4.375	x		x	x							\$4.11	\$3.86	\$3.62	\$3.37	\$3.12
VP37504500	3.750	4.500	x		x	x						x	\$4.11	\$3.86	\$3.62	\$3.37	\$3.12

* Add suffix to Size Number to specify component Part Number
 FN = Nylon Female Adapter

FF = Fabric Female Adapter
 VF = Fabric Vee
 VH = Hytrel Vee

VB = Homogeneous Nitrile Vee
 MN = Nylon Male Adapter
 MF = Fabric Male Adapter

**Other tools are available.
 Call customer service for details.

Vee Packing Components - Inch

Size #	ID	OD	Suffix*								1-99	100-249	250-499	500-999	1000+	
			VF	VH	FN	MN	VB	MF	FF	**						
.375 CS																
VP40004750	4.000	4.750	x	x	x	x					x	\$4.18	\$3.93	\$3.68	\$3.43	\$3.18
VP40624812	4.062	4.812	x	x					x	x	x	\$4.73	\$4.45	\$4.16	\$3.88	\$3.59
VP42505000	4.250	5.000	x	x	x	x						\$4.81	\$4.52	\$4.23	\$3.94	\$3.66
VP42755025	4.275	5.025	x		x						x	\$4.87	\$4.58	\$4.29	\$3.99	\$3.70
VP45005250	4.500	5.250	x	x	x	x					x	\$4.99	\$4.69	\$4.39	\$4.09	\$3.79
VP47505500	4.750	5.500	x	x	x	x						\$5.23	\$4.92	\$4.60	\$4.29	\$3.97
VP48755625	4.875	5.625	x	x					x		x	\$5.45	\$5.12	\$4.80	\$4.47	\$4.14
VP50005750	5.000	5.750	x	x	x	x					x	\$5.54	\$5.21	\$4.88	\$4.54	\$4.21
VP52506000	5.250	6.000	x	x	x	x						\$5.76	\$5.41	\$5.07	\$4.72	\$4.38
VP52756025	5.275	6.025	x	x	x	x					x	\$5.91	\$5.56	\$5.20	\$4.85	\$4.49
VP55006250	5.500	6.250	x	x	x	x						\$6.04	\$5.68	\$5.32	\$4.95	\$4.59
VP57006450	5.700	6.450	x									\$6.53	\$6.14	\$5.75	\$5.35	\$4.96
VP57506500	5.750	6.500	x	x	x	x						\$6.53	\$6.14	\$5.75	\$5.35	\$4.96
VP57756525	5.775	6.525	x		x	x						\$6.75	\$6.35	\$5.94	\$5.54	\$5.13
VP60006750	6.000	6.750	x		x	x						\$6.98	\$6.56	\$6.14	\$5.72	\$5.30
VP60306780	6.030	6.780	x	x	x	x						\$7.45	\$7.00	\$6.56	\$6.11	\$5.66
VP62507000	6.250	7.000	x		x	x	x					\$7.31	\$6.87	\$6.43	\$5.99	\$5.56
VP62757025	6.275	7.025				x						\$7.53	\$7.08	\$6.63	\$6.17	\$5.72
VP65007250	6.500	7.250	x	x	x	x						\$7.55	\$7.10	\$6.64	\$6.19	\$5.74
VP67507500	6.750	7.500	x	x	x	x						\$7.72	\$7.26	\$6.79	\$6.33	\$5.87
VP68757625	6.875	7.625	x						x	x		\$7.99	\$7.51	\$7.03	\$6.55	\$6.07
VP70007750	7.000	7.750	x		x	x						\$7.99	\$7.51	\$7.03	\$6.55	\$6.07
VP72508000	7.250	8.000	x		x	x						\$8.14	\$7.65	\$7.16	\$6.67	\$6.19
VP75008250	7.500	8.250	x		x	x	x					\$8.53	\$8.02	\$7.51	\$6.99	\$6.48
VP77508500	7.750	8.500	x		x	x						\$8.91	\$8.38	\$7.84	\$7.31	\$6.77
VP80008750	8.000	8.750	x		x	x						\$9.29	\$8.73	\$8.18	\$7.62	\$7.06
VP82509000	8.250	9.000	x		x		x				x	\$9.68	\$9.10	\$8.52	\$7.94	\$7.36
VP83759125	8.375	9.125	x						x	x		\$9.99	\$9.39	\$8.79	\$8.19	\$7.59
VP84459195	8.445	9.195	x		x		x				x	\$10.17	\$9.56	\$8.95	\$8.34	\$7.73
VP85009250	8.500	9.250	x		x	x	x					\$10.38	\$9.76	\$9.13	\$8.51	\$7.89
VP90009750	9.000	9.750	x		x	x	x				x	\$11.01	\$10.35	\$9.69	\$9.03	\$8.37
VP975010500	9.750	10.500	x		x	x						\$12.33	\$11.59	\$10.85	\$10.11	\$9.37
VP987510625	9.875	10.625	x						x	x		\$13.45	\$12.64	\$11.84	\$11.03	\$10.22
VP1050011250	10.500	11.250	x									\$13.61	\$12.79	\$11.98	\$11.16	\$10.34
VP1125012000	11.250	12.000	x						x	x		\$14.76	\$13.87	\$12.99	\$12.10	\$11.22
.385 CS																
VP27503520	2.750	3.520			x	x						\$3.70	\$3.48	\$3.26	\$3.03	\$2.81
VP32504020	3.250	4.020	x		x	x					x	\$4.03	\$3.79	\$3.55	\$3.30	\$3.06
VP35004270	3.500	4.270	x		x	x					x	\$4.17	\$3.92	\$3.67	\$3.42	\$3.17
VP37504520	3.750	4.520	x	x	x	x			x	x		\$4.25	\$4.00	\$3.74	\$3.49	\$3.23
.387 CS																
VP27503525	2.750	3.525		x					x	x		\$3.76	\$3.53	\$3.31	\$3.08	\$2.86
.390 CS																
VP27503530	2.750	3.530	x									\$3.78	\$3.55	\$3.33	\$3.10	\$2.87
VP42505030	4.250	5.030	x									\$4.83	\$4.54	\$4.25	\$3.96	\$3.67

* Add suffix to Size Number to specify component Part Number
 FN = Nylon Female Adapter

FF = Fabric Female Adapter
 VF = Fabric Vee
 VH = Hytrel Vee

VB = Homogeneous Nitrile Vee
 MN = Nylon Male Adapter
 MF = Fabric Male Adapter

**Other tools are available.
 Call customer service for details.

Vee Packing Components - Inch

Size #	ID	OD	Suffix*								1-99	100-249	250-499	500-999	1000+	
			VF	VH	FN	MN	VB	MF	FF	**						
.393 CS (10mm)																
VP25593346	2.559	3.346		x								\$3.99	\$3.75	\$3.51	\$3.27	\$3.03
VP27563543	2.756	3.543	x	x	x	x					x	\$4.11	\$3.86	\$3.62	\$3.37	\$3.12
VP31503937	3.150	3.937	x		x	x						\$4.19	\$3.94	\$3.69	\$3.44	\$3.18
VP35434331	3.543	4.331	x		x	x						\$4.32	\$4.06	\$3.80	\$3.54	\$3.28
VP82689055	8.268	9.055	x									\$8.94	\$8.40	\$7.87	\$7.33	\$6.79
VP984310630	9.843	10.630	x									\$11.49	\$10.80	\$10.11	\$9.42	\$8.73
VP1141712205	11.417	12.205	x									\$14.53	\$13.66	\$12.79	\$11.91	\$11.04
.400 CS																
VP64507250	6.450	7.250	x									\$7.86	\$7.39	\$6.92	\$6.45	\$5.97
VP77008500	7.700	8.500	x					x		x		\$8.63	\$8.11	\$7.59	\$7.08	\$6.56
VP89509750	8.950	9.750	x									\$9.20	\$8.65	\$8.10	\$7.54	\$6.99
VP1045011250	10.450	11.250	x									\$10.75	\$10.11	\$9.46	\$8.82	\$8.17
.410 CS																
VP30003820	3.000	3.820	x									\$5.10	\$4.79	\$4.49	\$4.18	\$3.88
.437 CS																
VP12502125	1.250	2.125	x		x	x						\$4.46	\$4.19	\$3.92	\$3.66	\$3.39
VP13752250	1.375	2.250	x		x	x						\$4.62	\$4.34	\$4.07	\$3.79	\$3.51
VP15002375	1.500	2.375	x	x	x	x						\$4.79	\$4.50	\$4.22	\$3.93	\$3.64
VP20002875	2.000	2.875	x									\$4.95	\$4.65	\$4.36	\$4.06	\$3.76
VP21253000	2.125	3.000	x	x								\$5.08	\$4.78	\$4.47	\$4.17	\$3.86
VP22503125	2.250	3.125	x		x	x						\$5.23	\$4.92	\$4.60	\$4.29	\$3.97
VP25003375	2.500	3.375	x		x	x						\$5.44	\$5.11	\$4.79	\$4.46	\$4.13
VP31254000	3.125	4.000	x		x	x						\$5.59	\$5.25	\$4.92	\$4.58	\$4.25
VP38754750	3.875	4.750			x					x		\$5.90	\$5.55	\$5.19	\$4.84	\$4.48
VP40004875	4.000	4.875	x		x	x						\$5.90	\$5.55	\$5.19	\$4.84	\$4.48
VP42505125	4.250	5.125	x	x	x	x						\$5.99	\$5.63	\$5.27	\$4.91	\$4.55
VP45005375	4.500	5.375	x	x	x	x						\$6.07	\$5.71	\$5.34	\$4.98	\$4.61
VP47505625	4.750	5.625	x		x	x						\$6.19	\$5.82	\$5.45	\$5.08	\$4.70
VP50005875	5.000	5.875	x		x	x						\$6.36	\$5.98	\$5.60	\$5.22	\$4.83
VP53756250	5.375	6.250			x					x		\$6.91	\$6.50	\$6.08	\$5.67	\$5.25
VP55006375	5.500	6.375				x						\$7.15	\$6.72	\$6.29	\$5.86	\$5.43
.450 CS																
VP41255025	4.125	5.025	x	x						x	x	\$5.98	\$5.62	\$5.26	\$4.90	\$4.54
.485 CS																
VP43655335	4.365	5.335				x						\$6.70	\$6.30	\$5.90	\$5.49	\$5.09
.492 CS (12.5mm)																
VP59056889	5.905	6.890	x							x	x	\$8.14	\$7.65	\$7.16	\$6.67	\$6.19
VP63007284	6.300	7.284	x									\$9.07	\$8.53	\$7.98	\$7.44	\$6.89
.500 CS																
VP10002000	1.000	2.000	x		x	x						\$2.90	\$2.73	\$2.55	\$2.38	\$2.20
VP12502250	1.250	2.250	x		x	x						\$2.93	\$2.75	\$2.58	\$2.40	\$2.23
VP15002500	1.500	2.500	x	x	x	x				x	x	\$2.98	\$2.80	\$2.62	\$2.44	\$2.26
VP17502750	1.750	2.750	x		x	x						\$3.14	\$2.95	\$2.76	\$2.57	\$2.39

* Add suffix to Size Number to specify component Part Number
 FN = Nylon Female Adapter

FF = Fabric Female Adapter
 VF = Fabric Vee
 VH = Hytrel Vee

VB = Homogeneous Nitrile Vee
 MN = Nylon Male Adapter
 MF = Fabric Male Adapter

**Other tools are available.
 Call customer service for details.

Vee Packing Components - Inch

Size #	ID	OD	Suffix*								1-99	100-249	250-499	500-999	1000+	
			VF	VH	FN	MN	VB	MF	FF	**						
.500 CS																
VP20003000	2.000	3.000	x	x	x	x						\$3.35	\$3.15	\$2.95	\$2.75	\$2.55
VP21253125	2.125	3.125	x									\$3.74	\$3.52	\$3.29	\$3.07	\$2.84
VP22503250	2.250	3.250	x		x	x						\$3.99	\$3.75	\$3.51	\$3.27	\$3.03
VP25003500	2.500	3.500	x	x	x	x						\$4.37	\$4.11	\$3.85	\$3.58	\$3.32
VP27503750	2.750	3.750	x	x	x	x						\$4.50	\$4.23	\$3.96	\$3.69	\$3.42
VP30004000	3.000	4.000	x	x	x	x					x	\$4.78	\$4.49	\$4.21	\$3.92	\$3.63
VP32504250	3.250	4.250	x		x	x						\$4.95	\$4.65	\$4.36	\$4.06	\$3.76
VP35004500	3.500	4.500	x	x	x	x						\$4.99	\$4.69	\$4.39	\$4.09	\$3.79
VP37504750	3.750	4.750	x		x	x						\$5.56	\$5.23	\$4.89	\$4.56	\$4.23
VP40005000	4.000	5.000	x	x	x	x			x		x	\$5.67	\$5.33	\$4.99	\$4.65	\$4.31
VP42505250	4.250	5.250	x		x	x						\$6.05	\$5.69	\$5.32	\$4.96	\$4.60
VP45005500	4.500	5.500	x	x	x	x						\$6.29	\$5.91	\$5.54	\$5.16	\$4.78
VP47505750	4.750	5.750	x		x	x						\$6.54	\$6.15	\$5.76	\$5.36	\$4.97
VP50006000	5.000	6.000	x	x	x	x					x	\$6.61	\$6.21	\$5.82	\$5.42	\$5.02
VP52506250	5.250	6.250	x		x	x						\$6.99	\$6.57	\$6.15	\$5.73	\$5.31
VP55006500	5.500	6.500	x	x	x	x						\$7.28	\$6.84	\$6.41	\$5.97	\$5.53
VP57506750	5.750	6.750	x	x	x	x						\$7.42	\$6.97	\$6.53	\$6.08	\$5.64
VP58126812	5.812	6.812	x						x		x	\$9.54	\$8.97	\$8.40	\$7.82	\$7.25
VP60007000	6.000	7.000	x	x	x	x			x		x	\$7.89	\$7.42	\$6.94	\$6.47	\$6.00
VP62507250	6.250	7.250	x						x		x	\$8.22	\$7.73	\$7.23	\$6.74	\$6.25
VP63757375	6.375	7.375						x				\$9.59	\$9.01	\$8.44	\$7.86	\$7.29
VP65007500	6.500	7.500	x		x	x	x	x	x			\$8.46	\$7.95	\$7.44	\$6.94	\$6.43
VP68127812	6.812	7.812	x									\$9.65	\$9.07	\$8.49	\$7.91	\$7.33
VP68757875	6.875	7.875	x						x		x	\$10.57	\$9.94	\$9.30	\$8.67	\$8.03
VP70008000	7.000	8.000	x	x	x	x			x		x	\$9.78	\$9.19	\$8.61	\$8.02	\$7.43
VP72508250	7.250	8.250	x						x		x	\$9.96	\$9.36	\$8.76	\$8.17	\$7.57
VP75008500	7.500	8.500	x		x	x						\$10.30	\$9.68	\$9.06	\$8.45	\$7.83
VP78758875	7.875	8.875	x						x		x	\$11.62	\$10.92	\$10.23	\$9.53	\$8.83
VP80009000	8.000	9.000	x					x	x			\$11.21	\$10.54	\$9.86	\$9.19	\$8.52
VP80509050	8.050	9.050	x									\$11.54	\$10.85	\$10.16	\$9.46	\$8.77
VP82509250	8.250	9.250	x						x		x	\$12.08	\$11.36	\$10.63	\$9.91	\$9.18
VP85009500	8.500	9.500	x						x		x	\$12.08	\$11.36	\$10.63	\$9.91	\$9.18
VP88759875	8.875	9.875	x						x		x	\$12.67	\$11.91	\$11.15	\$10.39	\$9.63
VP900010000	9.000	10.000	x			x			x		x	\$12.67	\$11.91	\$11.15	\$10.39	\$9.63
VP912510125	9.125	10.125	x						x		x	\$13.89	\$13.06	\$12.22	\$11.39	\$10.56
VP925010250	9.250	10.250	x									\$13.89	\$13.06	\$12.22	\$11.39	\$10.56
VP950010500	9.500	10.500	x		x	x			x		x	\$14.07	\$13.23	\$12.38	\$11.54	\$10.69
VP987510875	9.875	10.875	x						x		x	\$14.31	\$13.45	\$12.59	\$11.73	\$10.88
VP1000011000	10.000	11.000	x						x		x	\$14.38	\$13.52	\$12.65	\$11.79	\$10.93
VP1037511375	10.375	11.375	x						x		x	\$14.77	\$13.88	\$13.00	\$12.11	\$11.23
VP1050011500	10.500	11.500	x								x	\$14.77	\$13.88	\$13.00	\$12.11	\$11.23
VP1087511875	10.875	11.875	x									\$15.93	\$14.97	\$14.02	\$13.06	\$12.11
VP1100012000	11.000	12.000	x						x		x	\$15.93	\$14.97	\$14.02	\$13.06	\$12.11
VP1137512375	11.375	12.375	x						x		x	\$17.82	\$16.75	\$15.68	\$14.61	\$13.54
VP1143712437	11.437	12.437	x						x		x	\$18.29	\$17.19	\$16.10	\$15.00	\$13.90
VP1187512875	11.875	12.875	x						x		x	\$18.71	\$17.59	\$16.46	\$15.34	\$14.22
VP1200013000	12.000	13.000	x						x		x	\$18.71	\$17.59	\$16.46	\$15.34	\$14.22
VP1318714187	13.187	14.187	x						x		x	\$22.32	\$20.98	\$19.64	\$18.30	\$16.96
VP1325014250	13.250	14.250	x						x		x	\$23.56	\$22.15	\$20.73	\$19.32	\$17.91
VP1381214812	13.812	14.812	x						x		x	\$25.54	\$24.01	\$22.48	\$20.94	\$19.41

* Add suffix to Size Number to specify component Part Number
 FN = Nylon Female Adapter

FF = Fabric Female Adapter
 VF = Fabric Vee
 VH = Hytrel Vee

VB = Homogeneous Nitrile Vee
 MN = Nylon Male Adapter
 MF = Fabric Male Adapter

**Other tools are available.
 Call customer service for details.

Vee Packing Components - Inch

Size #	ID	OD	Suffix*								1-99	100-249	250-499	500-999	1000+		
			VF	VH	FN	MN	VB	MF	FF	**							
.500 CS																	
VP1650017500	16.500	17.500										x	\$47.97	\$45.09	\$42.21	\$39.34	\$36.46
.515 CS																	
VP45005530	4.500	5.530	x		x	x	x						\$7.74	\$7.28	\$6.81	\$6.35	\$5.88
.520 CS																	
VP50006040	5.000	6.040	x										\$7.64	\$7.18	\$6.72	\$6.26	\$5.81
VP60007040	6.000	7.040	x										\$8.87	\$8.34	\$7.81	\$7.27	\$6.74
VP80009040	8.000	9.040	x										\$11.74	\$11.04	\$10.33	\$9.63	\$8.92
.531 CS																	
VP31874250	3.187	4.250	x						x	x			\$6.62	\$6.22	\$5.83	\$5.43	\$5.03
VP62507312	6.250	7.312	x										\$12.20	\$11.47	\$10.74	\$10.00	\$9.27
.554 CS																	
VP17662875	1.766	2.875	x						x	x			\$5.18	\$4.87	\$4.56	\$4.25	\$3.94
.562 CS																	
VP78759000	7.875	9.000	x						x	x			\$13.46	\$12.65	\$11.84	\$11.04	\$10.23
VP887510000	8.875	10.000	x						x	x			\$14.95	\$14.05	\$13.16	\$12.26	\$11.36
VP987511000	9.875	11.000	x						x	x			\$16.67	\$15.67	\$14.67	\$13.67	\$12.67
VP1087512000	10.875	12.000	x						x	x			\$18.80	\$17.67	\$16.54	\$15.42	\$14.29
VP1187513000	11.875	13.000	x						x	x			\$20.76	\$19.51	\$18.27	\$17.02	\$15.78
.590 CS (15mm)																	
VP47245905	4.724	5.905	x						x	x			\$9.84	\$9.25	\$8.66	\$8.07	\$7.48
VP55126693	5.512	6.693	x						x	x			\$11.43	\$10.74	\$10.06	\$9.37	\$8.69
VP59057087	5.905	7.087	x						x	x			\$13.87	\$13.04	\$12.21	\$11.37	\$10.54
VP86629843	8.662	9.843	x						x	x			\$16.80	\$15.79	\$14.78	\$13.78	\$12.77
VP984311024	9.843	11.024	x										\$19.66	\$18.48	\$17.30	\$16.12	\$14.94
.622 CS																	
VP79259170	7.925	9.170	x					x					\$17.56	\$16.51	\$15.45	\$14.40	\$13.35
.625 CS																	
VP12502500	1.250	2.500	x						x	x			\$4.85	\$4.56	\$4.27	\$3.98	\$3.69
VP27504000	2.750	4.000	x		x	x	x						\$8.31	\$7.81	\$7.31	\$6.81	\$6.32
VP33754625	3.375	4.625	x										\$8.68	\$8.16	\$7.64	\$7.12	\$6.60
VP37505000	3.750	5.000	x						x	x	x		\$9.21	\$8.66	\$8.10	\$7.55	\$7.00
VP40005250	4.000	5.250	x										\$10.96	\$10.30	\$9.64	\$8.99	\$8.33
VP50006250	5.000	6.250	x						x	x			\$10.99	\$10.33	\$9.67	\$9.01	\$8.35
VP57507000	5.750	7.000	x						x	x			\$11.96	\$11.24	\$10.52	\$9.81	\$9.09
VP60007250	6.000	7.250	x						x	x			\$12.48	\$11.73	\$10.98	\$10.23	\$9.48
VP65007750	6.500	7.750	x										\$12.95	\$12.17	\$11.40	\$10.62	\$9.84
VP67508000	6.750	8.000	x						x	x			\$12.95	\$12.17	\$11.40	\$10.62	\$9.84
VP70008250	7.000	8.250	x										\$13.39	\$12.59	\$11.78	\$10.98	\$10.18
VP75008750	7.500	8.750	x										\$14.01	\$13.17	\$12.33	\$11.49	\$10.65
VP77509000	7.750	9.000	x										\$16.06	\$15.10	\$14.13	\$13.17	\$12.21
VP80009250	8.000	9.250	x						x	x			\$16.06	\$15.10	\$14.13	\$13.17	\$12.21
VP81879437	8.187	9.437	x						x	x			\$17.26	\$16.22	\$15.19	\$14.15	\$13.12

* Add suffix to Size Number to specify component Part Number
 FN = Nylon Female Adapter

FF = Fabric Female Adapter
 VF = Fabric Vee
 VH = Hytrel Vee

VB = Homogeneous Nitrile Vee
 MN = Nylon Male Adapter
 MF = Fabric Male Adapter

**Other tools are available.
 Call customer service for details.

Vee Packing Components - Inch

Size #	ID	OD	Suffix*								1-99	100-249	250-499	500-999	1000+	
			VF	VH	FN	MN	VB	MF	FF	**						
.625 CS																
VP900010250	9.000	10.250	x									\$17.26	\$16.22	\$15.19	\$14.15	\$13.12
VP925010500	9.250	10.500	x						x	x		\$19.21	\$18.06	\$16.90	\$15.75	\$14.60
VP931210562	9.312	10.562	x					x	x	x		\$19.86	\$18.67	\$17.48	\$16.29	\$15.09
VP1000011250	10.000	11.250	x					x	x	x	x	\$18.40	\$17.30	\$16.19	\$15.09	\$13.98
VP1025011500	10.250	11.500	x									\$22.70	\$21.34	\$19.98	\$18.61	\$17.25
VP1075012000	10.750	12.000	x									\$24.34	\$22.88	\$21.42	\$19.96	\$18.50
.656 CS																
VP41875500	4.187	5.500	x						x	x		\$12.40	\$11.66	\$10.91	\$10.17	\$9.42
.750 CS																
VP35005000	3.500	5.000	x		x	x						\$9.63	\$9.05	\$8.47	\$7.90	\$7.32
VP40005500	4.000	5.500	x						x	x		\$9.97	\$9.37	\$8.77	\$8.18	\$7.58
VP45006000	4.500	6.000	x						x	x		\$10.18	\$9.57	\$8.96	\$8.35	\$7.74
VP50006500	5.000	6.500	x						x	x		\$11.15	\$10.48	\$9.81	\$9.14	\$8.47
VP52506750	5.250	6.750									x	\$10.86	\$10.21	\$9.56	\$8.91	\$8.25
VP55007000	5.500	7.000	x						x	x		\$11.94	\$11.22	\$10.51	\$9.79	\$9.07
VP57507250	5.750	7.250	x						x	x		\$13.45	\$12.64	\$11.84	\$11.03	\$10.22
VP60007500	6.000	7.500	x									\$16.63	\$15.63	\$14.63	\$13.64	\$12.64
VP65008000	6.500	8.000	x						x	x		\$16.98	\$15.96	\$14.94	\$13.92	\$12.90
VP75009000	7.500	9.000	x									\$17.16	\$16.13	\$15.10	\$14.07	\$13.04
VP80009500	8.000	9.500	x						x	x		\$18.77	\$17.64	\$16.52	\$15.39	\$14.27
VP850010000	8.500	10.000	x						x	x		\$19.47	\$18.30	\$17.13	\$15.97	\$14.80
VP900010500	9.000	10.500	x						x	x		\$20.01	\$18.81	\$17.61	\$16.41	\$15.21
VP987511375	9.875	11.375	x						x	x		\$28.99	\$27.25	\$25.51	\$23.77	\$22.03
VP1000011500	10.000	11.500	x						x	x		\$21.78	\$20.47	\$19.17	\$17.86	\$16.55
VP1062512125	10.625	12.125	x									\$29.36	\$27.60	\$25.84	\$24.08	\$22.31
VP1100012500	11.000	12.500	x						x	x		\$23.10	\$21.71	\$20.33	\$18.94	\$17.56
.781 CS																
VP850010062	8.500	10.062	x								x	\$20.33	\$19.11	\$17.89	\$16.67	\$15.45
.875 CS																
VP1100012750	11.000	12.750	x						x	x		\$30.92	\$29.06	\$27.21	\$25.35	\$23.50
.950 CS																
VP810010000	8.100	10.000	x									\$38.27	\$35.97	\$33.68	\$31.38	\$29.09
1.062 CS																
VP1987522000	19.875	22.000						x				\$120.56	\$113.33	\$106.09	\$98.86	\$91.63

* Add suffix to Size Number to specify component Part Number
 FN = Nylon Female Adapter

FF = Fabric Female Adapter
 VF = Fabric Vee
 VH = Hytrel Vee

VB = Homogeneous Nitrile Vee
 MN = Nylon Male Adapter
 MF = Fabric Male Adapter

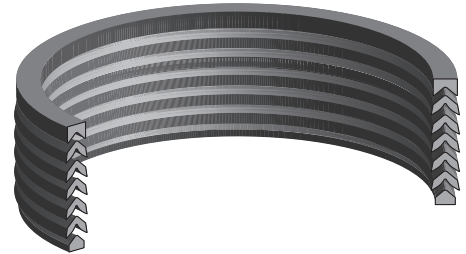
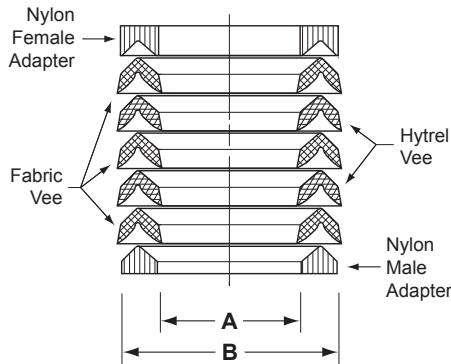
**Other tools are available.
 Call customer service for details.

Vee Packing Components - Metric

Suffix Listing

* Add suffix to Size Number to specify component Part Number

- FN = Nylon Female Adapter
- FF = Fabric Female Adapter
- VF = Fabric Vee
- VH = Hytrel® Vee
- VB = Homogeneous Nitrile Vee
- MN = Nylon Male Adapter
- MF = Fabric Male Adapter



This page contains a listing of solid vee packing. Glass filled nylon adapters (for extrusion resistance) and hytrel® vees (for dry wiping action) are standard in most sizes under 110MM O.D. Also available, are plus and minus adapters for meeting your nonstandard stack height requirements. NOTE: **Not all sizes available in all materials or all components.** Please contact our sales department for more information.

ID	OD	Size #	Suffix*								1-99	100-249	250-499	500-999	1000+			
			VF	VH	FN	MN	VB	MF	FF	**								
7.5 CS (mm)																		
40	55	VP15752165	x	x	x	x								\$2.53	\$2.38	\$2.23	\$2.07	\$1.92
42	57	VP16532244		x										\$2.72	\$2.56	\$2.39	\$2.23	\$2.07
45	60	VP17722362											x	\$2.75	\$2.59	\$2.42	\$2.26	\$2.09
50	65	VP19692559	x	x	x	x								\$2.84	\$2.67	\$2.50	\$2.33	\$2.16
60	75	VP23622953	x	x	x	x								\$2.93	\$2.75	\$2.58	\$2.40	\$2.23
65	80	VP25593150	x	x	x	x								\$3.05	\$2.87	\$2.68	\$2.50	\$2.32
70	85	VP27563347	x	x	x	x								\$3.09	\$2.90	\$2.72	\$2.53	\$2.35
75	90	VP29533543	x	x	x	x								\$3.14	\$2.95	\$2.76	\$2.57	\$2.39
80	95	VP31503740	x	x	x	x								\$3.23	\$3.04	\$2.84	\$2.65	\$2.45
85	100	VP33463937	x											\$3.29	\$3.09	\$2.90	\$2.70	\$2.50
90	105	VP35434134	x	x	x	x								\$3.47	\$3.26	\$3.05	\$2.85	\$2.64
10 CS (mm)																		
65	85	VP25593346		x										\$3.99	\$3.75	\$3.51	\$3.27	\$3.03
70	90	VP27563543	x	x	x	x							x	\$4.11	\$3.86	\$3.62	\$3.37	\$3.12
80	100	VP31503937	x		x	x								\$4.19	\$3.94	\$3.69	\$3.44	\$3.18
90	110	VP35434331	x		x	x								\$4.32	\$4.06	\$3.80	\$3.54	\$3.28
210	230	VP82689055	x											\$8.94	\$8.40	\$7.87	\$7.33	\$6.79
250	270	VP984310630	x											\$11.49	\$10.80	\$10.11	\$9.42	\$8.73
290	310	VP1141712205	x											\$14.53	\$13.66	\$12.79	\$11.91	\$11.04
12.5 CS (mm)																		
150	175	VP59056889	x							x	x			\$8.14	\$7.65	\$7.16	\$6.67	\$6.19
160	185	VP63007284	x											\$9.07	\$8.53	\$7.98	\$7.44	\$6.89
15 CS (mm)																		
120	150	VP47245905	x							x	x			\$9.84	\$9.25	\$8.66	\$8.07	\$7.48
140	170	VP55126693	x							x	x			\$11.43	\$10.74	\$10.06	\$9.37	\$8.69
150	180	VP59057087	x							x	x			\$13.87	\$13.04	\$12.21	\$11.37	\$10.54
220	250	VP86629843	x							x	x			\$16.80	\$15.79	\$14.78	\$13.78	\$12.77
250	280	VP984311024	x											\$19.66	\$18.48	\$17.30	\$16.12	\$14.94

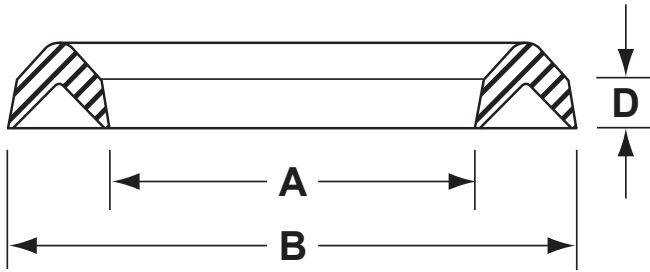
* Add suffix to Size Number to specify component Part Number
FN = Nylon Female Adapter

FF = Fabric Female Adapter
VF = Fabric Vee
VH = Hytrel Vee

VB = Homogeneous Nitrile Vee
MN = Nylon Male Adapter
MF = Fabric Male Adapter

**Other tools are available.
Call customer service for details.

AN Style Vee Packing (6225)



This short profile 90 durometer nitrile vee is used in sets for pneumatic and hydraulic applications. Normally they are stacked together, or in conjunction with leather or TFE vees of the same profile for hydraulic applications. This profile is also available in other compounds including Viton, EPDM, and Leather. Consult sales office for price and availability.

Temperature: -40° to 225°F

Pressure: consult technical service

Part #	ID	OD	CS	Stk. Ht.	1-99	100-249	250-499	500-999	1000+
AN Style Duck and Rubber Veas									
AANDRV-16	0.750	1.250	0.250	0.083	\$1.51	\$1.43	\$1.36	\$1.28	\$1.21
ANDRV-18	0.875	1.375	0.250	0.083	\$1.55	\$1.47	\$1.40	\$1.32	\$1.24
ANDRV-20	1.000	1.500	0.250	0.083	\$1.59	\$1.51	\$1.43	\$1.35	\$1.27
ANDRV-22	1.125	1.625	0.250	0.083	\$1.63	\$1.55	\$1.47	\$1.39	\$1.30
ANDRV-24	1.250	1.750	0.250	0.083	\$1.69	\$1.61	\$1.52	\$1.44	\$1.35
ANDRV-27	1.500	2.125	0.312	0.140	\$1.76	\$1.67	\$1.58	\$1.50	\$1.41
ANDRV-29	1.750	2.375	0.312	0.140	\$1.82	\$1.73	\$1.64	\$1.55	\$1.46
ANDRV-30	1.875	2.500	0.312	0.140	\$1.88	\$1.79	\$1.69	\$1.60	\$1.50
ANDRV-31	2.000	2.625	0.312	0.140	\$1.95	\$1.85	\$1.76	\$1.66	\$1.56
ANDRV-34	2.375	3.000	0.312	0.140	\$2.02	\$1.92	\$1.82	\$1.72	\$1.62
ANDRV-35	2.500	3.125	0.312	0.140	\$2.09	\$1.99	\$1.88	\$1.78	\$1.67
ANDRV-38	2.750	3.500	0.375	0.156	\$3.15	\$2.99	\$2.84	\$2.68	\$2.52
ANDRV-42	3.250	4.000	0.375	0.156	\$3.67	\$3.49	\$3.30	\$3.12	\$2.94
ANDRV-43	3.375	4.125	0.375	0.156	\$3.89	\$3.70	\$3.50	\$3.31	\$3.11
ANDRV-44	3.500	4.250	0.375	0.156	\$4.01	\$3.81	\$3.61	\$3.41	\$3.21
ANDRV-46	3.750	4.500	0.375	0.156	\$4.11	\$3.90	\$3.70	\$3.49	\$3.29
ANDRV-49	4.000	4.875	0.437	0.197	\$5.99	\$5.69	\$5.39	\$5.09	\$4.79
ANDRV-51	4.500	5.375	0.437	0.197	\$6.18	\$5.87	\$5.56	\$5.25	\$4.94
ANDRV-52	4.750	5.625	0.437	0.197	\$6.29	\$5.98	\$5.66	\$5.35	\$5.03
ANDRV-53	5.000	5.875	0.437	0.197	\$6.45	\$6.13	\$5.81	\$5.48	\$5.16
ANDRV-54	5.250	6.125	0.437	0.197	\$6.92	\$6.57	\$6.23	\$5.88	\$5.54
ANDRV-57	5.750	6.750	0.500	0.197	\$7.19	\$6.83	\$6.47	\$6.11	\$5.75
ANDRV-58	6.000	7.000	0.500	0.197	\$7.93	\$7.53	\$7.14	\$6.74	\$6.34
ANDRV-60	6.500	7.500	0.500	0.197	\$8.54	\$8.11	\$7.69	\$7.26	\$6.83
ANDRV-64	7.500	8.500	0.500	0.197	\$10.41	\$9.89	\$9.37	\$8.85	\$8.33
ANDRV-67	8.500	9.500	0.500	0.197	\$12.26	\$11.65	\$11.03	\$10.42	\$9.81
ANDRV-68	9.000	10.000	0.500	0.197	\$12.97	\$12.32	\$11.67	\$11.02	\$10.38
ANDRV-83	16.500	17.500	0.500	0.197	\$48.89	\$46.45	\$44.00	\$41.56	\$39.11
AN Style Duck and Rubber Males									
ANDRM-18	0.875	1.375	0.250	0.063	\$1.64	\$1.56	\$1.48	\$1.39	\$1.31
ANDRM-20	1.000	1.500	0.250	0.063	\$1.69	\$1.61	\$1.52	\$1.44	\$1.35

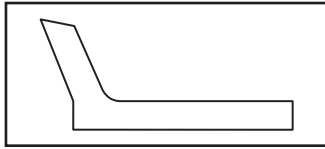
AN Style Vee Packing (6225)

Part #	ID	OD	CS	Stk. Ht.	1-99	100-249	250-499	500-999	1000+
AN Style Duck and Rubber Females									
ANDRF-18	0.875	1.375	0.250	0.250	\$1.64	\$1.56	\$1.48	\$1.39	\$1.31
AN Style 55 Durometer (Shore D) Adapters									
AN55D-14M	0.625	1.125	0.250	0.063	\$3.80	\$3.61	\$3.42	\$3.23	\$3.04
AN55D-16F	0.750	1.250	0.250	0.250	\$3.85	\$3.66	\$3.47	\$3.27	\$3.08
AN55D-16M	0.750	1.250	0.250	0.063	\$3.85	\$3.66	\$3.47	\$3.27	\$3.08
AN55D-18F	0.875	1.375	0.250	0.250	\$3.92	\$3.72	\$3.53	\$3.33	\$3.14
AN55D-18M	0.875	1.375	0.250	0.063	\$3.92	\$3.72	\$3.53	\$3.33	\$3.14
AN55D-20F	1.000	1.500	0.250	0.250	\$3.99	\$3.79	\$3.59	\$3.39	\$3.19
AN55D-20M	1.000	1.500	0.250	0.063	\$3.99	\$3.79	\$3.59	\$3.39	\$3.19
AN55D-22F	1.125	1.625	0.250	0.250	\$4.08	\$3.88	\$3.67	\$3.47	\$3.26
AN55D-22M	1.125	1.625	0.250	0.063	\$4.08	\$3.88	\$3.67	\$3.47	\$3.26
AN55D-24F	1.250	1.750	0.250	0.250	\$4.17	\$3.96	\$3.75	\$3.54	\$3.34
AN55D-24M	1.250	1.750	0.250	0.063	\$4.17	\$3.96	\$3.75	\$3.54	\$3.34
AN55D-25F	1.250	1.875	0.312	0.312	\$4.32	\$4.10	\$3.89	\$3.67	\$3.46
AN55D-25M	1.250	1.875	0.312	0.063	\$4.32	\$4.10	\$3.89	\$3.67	\$3.46
AN55D-27F	1.500	2.125	0.312	0.312	\$4.48	\$4.26	\$4.03	\$3.81	\$3.58
AN55D-27M	1.500	2.125	0.312	0.063	\$4.48	\$4.26	\$4.03	\$3.81	\$3.58
AN55D-28M	1.625	2.250	0.312	0.063	\$4.73	\$4.49	\$4.26	\$4.02	\$3.78
AN55D-29F	1.750	2.375	0.312	0.312	\$4.88	\$4.64	\$4.39	\$4.15	\$3.90
AN55D-29M	1.750	2.375	0.312	0.063	\$4.88	\$4.64	\$4.39	\$4.15	\$3.90
AN55D-30F	1.875	2.500	0.312	0.312	\$5.04	\$4.79	\$4.54	\$4.28	\$4.03
AN55D-30M	1.875	2.500	0.312	0.063	\$5.04	\$4.79	\$4.54	\$4.28	\$4.03
AN55D-31F	2.000	2.625	0.312	0.312	\$5.21	\$4.95	\$4.69	\$4.43	\$4.17
AN55D-31M	2.000	2.625	0.312	0.063	\$5.21	\$4.95	\$4.69	\$4.43	\$4.17
AN55D-33F	2.250	2.875	0.312	0.312	\$5.53	\$5.25	\$4.98	\$4.70	\$4.42
AN55D-33M	2.250	2.875	0.312	0.063	\$5.53	\$5.25	\$4.98	\$4.70	\$4.42
AN55D-34F	2.375	3.000	0.312	0.312	\$5.76	\$5.47	\$5.18	\$4.90	\$4.61
AN55D-34M	2.375	3.000	0.312	0.063	\$5.76	\$5.47	\$5.18	\$4.90	\$4.61
AN55D-35F	2.500	3.125	0.312	0.312	\$5.87	\$5.58	\$5.28	\$4.99	\$4.70
AN55D-35M	2.500	3.125	0.312	0.063	\$5.87	\$5.58	\$5.28	\$4.99	\$4.70
AN55D-38F	2.750	3.500	0.375	0.375	\$6.30	\$5.99	\$5.67	\$5.36	\$5.04
AN55D-38M	2.750	3.500	0.375	0.063	\$6.30	\$5.99	\$5.67	\$5.36	\$5.04
AN55D-40M	3.000	3.750	0.375	0.063	\$6.59	\$6.26	\$5.93	\$5.60	\$5.27
AN55D-42F	3.250	4.000	0.375	0.375	\$6.87	\$6.53	\$6.18	\$5.84	\$5.50
AN55D-42M	3.250	4.000	0.375	0.063	\$6.87	\$6.53	\$6.18	\$5.84	\$5.50
AN55D-43F	3.375	4.125	0.375	0.375	\$7.09	\$6.74	\$6.38	\$6.03	\$5.67
AN55D-43M	3.375	4.125	0.375	0.063	\$7.09	\$6.74	\$6.38	\$6.03	\$5.67
AN55D-44F	3.500	4.250	0.375	0.375	\$7.38	\$7.01	\$6.64	\$6.27	\$5.90
AN55D-44M	3.500	4.250	0.375	0.063	\$7.38	\$7.01	\$6.64	\$6.27	\$5.90
AN55D-46F	3.750	4.500	0.375	0.375	\$8.15	\$7.74	\$7.34	\$6.93	\$6.52
AN55D-46M	3.750	4.500	0.375	0.063	\$8.15	\$7.74	\$7.34	\$6.93	\$6.52
AN55D-49F	4.000	4.875	0.437	0.437	\$8.92	\$8.47	\$8.03	\$7.58	\$7.14
AN55D-49M	4.000	4.875	0.437	0.063	\$8.92	\$8.47	\$8.03	\$7.58	\$7.14
AN55D-50F	4.250	5.125	0.437	0.437	\$9.35	\$8.88	\$8.42	\$7.95	\$7.48
AN55D-50M	4.250	5.125	0.437	0.063	\$9.35	\$8.88	\$8.42	\$7.95	\$7.48
AN55D-51F	4.500	5.375	0.437	0.437	\$9.79	\$9.30	\$8.81	\$8.32	\$7.83
AN55D-51M	4.500	5.375	0.437	0.063	\$9.79	\$9.30	\$8.81	\$8.32	\$7.83
AN55D-52F	4.750	5.625	0.437	0.437	\$10.24	\$9.73	\$9.22	\$8.70	\$8.19
AN55D-52M	4.750	5.625	0.437	0.063	\$10.24	\$9.73	\$9.22	\$8.70	\$8.19
AN55D-53F	5.000	5.875	0.437	0.437	\$10.90	\$10.36	\$9.81	\$9.27	\$8.72
AN55D-53M	5.000	5.875	0.437	0.063	\$10.90	\$10.36	\$9.81	\$9.27	\$8.72
AN55D-54F	5.250	6.125	0.437	0.437	\$11.65	\$11.07	\$10.49	\$9.90	\$9.32

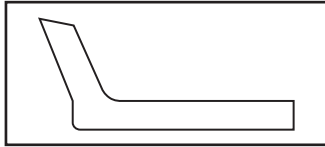
AN Style Vee Packing (6225)

Part #	ID	OD	CS	Stk. Ht.	1-99	100-249	250-499	500-999	1000+
AN Style 55 Durometer (Shore D) Adapters									
AN55D-54M	5.250	6.125	0.437	0.063	\$11.65	\$11.07	\$10.49	\$9.90	\$9.32
AN55D-56F	5.500	6.500	0.500	0.437	\$12.33	\$11.71	\$11.10	\$10.48	\$9.86
AN55D-56M	5.500	6.500	0.500	0.063	\$12.33	\$11.71	\$11.10	\$10.48	\$9.86
AN55D-57F	5.750	6.750	0.500	0.437	\$13.04	\$12.39	\$11.74	\$11.08	\$10.43
AN55D-57M	5.750	6.750	0.500	0.063	\$13.04	\$12.39	\$11.74	\$11.08	\$10.43
AN55D-58F	6.000	7.000	0.500	0.500	\$13.95	\$13.25	\$12.56	\$11.86	\$11.16
AN55D-58M	6.000	7.000	0.500	0.063	\$13.95	\$13.25	\$12.56	\$11.86	\$11.16
AN55D-64F	7.500	8.500	0.500	0.500	\$14.71	\$13.97	\$13.24	\$12.50	\$11.77
AN55D-64M	7.500	8.500	0.500	0.063	\$14.71	\$13.97	\$13.24	\$12.50	\$11.77
AN55D-67F	8.500	9.500	0.500	0.500	\$16.24	\$15.43	\$14.62	\$13.80	\$12.99
AN55D-67M	8.500	9.500	0.500	0.063	\$16.24	\$15.43	\$14.62	\$13.80	\$12.99
AN55D-68F	9.000	10.000	0.500	0.500	\$17.05	\$16.20	\$15.35	\$14.49	\$13.64
AN55D-68M	9.000	10.000	0.500	0.063	\$17.05	\$16.20	\$15.35	\$14.49	\$13.64

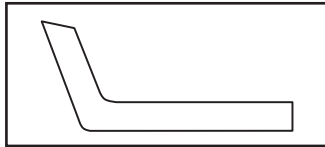
Piston Cups



..... Fabric and Nitrile Piston Cups 20

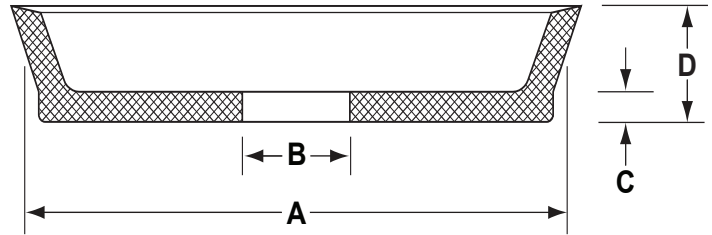
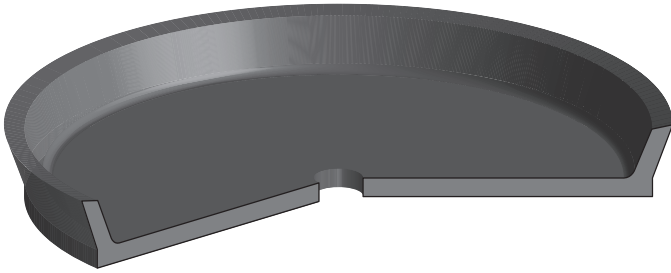


..... Homogeneous Nitrile Piston Cups 23



..... Polyurethane Piston Cups 25

Fabric and Nitrile Piston Cups



Fabric Reinforced Nitrile Piston Cups are suitable for hydraulic applications. Most cups are supplied solid. Custom center holes ("B") and bolt holes are available at an additional charge. Many sizes are also available from stock in Fabric & Viton. Consult sales office for price and availability of non-standard sizes and materials.

Temperature: -40° to 250°F

Pressure: 0 to 3,000 PSI

Part #	OD (A)	Height (D)	Base Thickness (C)	Ctr. Hole (B)					
					1-99	100-249	250-499	500-999	1000+
DR00375	0.375	0.250	0.062		\$2.43	\$2.26	\$2.09	\$1.94	\$1.82
DR00437	0.437	0.250	0.062		\$2.43	\$2.26	\$2.09	\$1.94	\$1.82
DR00500	0.500	0.250	0.062		\$2.43	\$2.26	\$2.09	\$1.94	\$1.82
DR00562	0.562	0.250	0.062		\$2.48	\$2.31	\$2.13	\$1.98	\$1.86
DR00625	0.625	0.281	0.093		\$2.48	\$2.31	\$2.13	\$1.99	\$1.86
DR00687	0.687	0.281	0.093		\$2.53	\$2.35	\$2.18	\$2.02	\$1.90
DR00750	0.750	0.312	0.093		\$2.53	\$2.35	\$2.18	\$2.02	\$1.90
DR00812	0.812	0.312	0.093		\$2.60	\$2.42	\$2.24	\$2.08	\$1.95
DR00875	0.875	0.750	0.093		\$2.60	\$2.42	\$2.24	\$2.08	\$1.95
DR00937	0.937	0.375	0.093		\$2.60	\$2.42	\$2.24	\$2.08	\$1.95
DR01000	1.000	0.437	0.093		\$2.60	\$2.42	\$2.24	\$2.08	\$1.95
DR01125	1.125	0.437	0.093		\$2.71	\$2.52	\$2.33	\$2.17	\$2.03
DR01250	1.250	0.437	0.093		\$3.00	\$2.79	\$2.58	\$2.40	\$2.25
DR01375	1.375	0.437	0.093		\$3.24	\$3.01	\$2.79	\$2.59	\$2.43
DR01500	1.500	0.500	0.125		\$3.47	\$3.23	\$2.98	\$2.78	\$2.60
DR01625	1.625	0.500	0.125		\$3.91	\$3.64	\$3.36	\$3.13	\$2.93
PCF1625-375-125	1.625	0.375	0.125		\$3.91	\$3.64	\$3.36	\$3.13	\$2.93
DR01750	1.750	0.500	0.125		\$3.99	\$3.71	\$3.43	\$3.19	\$2.99
DR01750-625	1.750	0.500	0.125	0.625	\$4.19	\$3.90	\$3.60	\$3.35	\$3.14
DR01750-687	1.750	0.500	0.125	0.687	\$4.19	\$3.90	\$3.60	\$3.35	\$3.14
DR01750-875	1.750	0.500	0.125	0.875	\$4.19	\$3.90	\$3.60	\$3.35	\$3.14
DR01875	1.875	0.500	0.125		\$4.35	\$4.05	\$3.74	\$3.48	\$3.26
DR02000	2.000	0.500	0.125		\$4.57	\$4.25	\$3.93	\$3.66	\$3.43
DR02000-625	2.000	0.500	0.125	0.625	\$4.77	\$4.44	\$4.10	\$3.82	\$3.58
DR02000-750	2.000	0.500	0.125	0.750	\$4.77	\$4.44	\$4.10	\$3.82	\$3.58
DR02000-1000	2.000	0.500	0.125	1.000	\$4.77	\$4.44	\$4.10	\$3.82	\$3.58
DR02000-1125	2.000	0.500	0.125	1.125	\$4.77	\$4.44	\$4.10	\$3.82	\$3.58
DR02125	2.125	0.500	0.125		\$4.77	\$4.44	\$4.10	\$3.82	\$3.58
DR02250	2.250	0.500	0.125		\$5.06	\$4.71	\$4.35	\$4.05	\$3.80

We can cut center holes and bolt holes in your piston cups to almost any size!

Set up charge for center holes: \$ 12.00
Holes up to and including 1": \$.50 per hole
Holes over 1": \$ 1.00 per hole

Set up charge for bolt holes: \$ 15.00
bolt holes: \$.50 each

Fabric and Nitrile Piston Cups

Part #	OD (A)	Height (D)	Base Thickness (C)	Ctr. Hole (B)					
					1-99	100-249	250-499	500-999	1000+
DR02375	2.375	0.500	0.125		\$5.29	\$4.92	\$4.55	\$4.23	\$3.97
DR02500	2.500	0.500	0.125		\$5.64	\$5.25	\$4.85	\$4.51	\$4.23
DR02500-625	2.500	0.500	0.125	0.625	\$5.84	\$5.43	\$5.02	\$4.67	\$4.38
DR02500-750	2.500	0.500	0.125	0.750	\$5.84	\$5.43	\$5.02	\$4.67	\$4.38
DR02500-1000	2.500	0.500	0.125	1.000	\$5.84	\$5.43	\$5.02	\$4.67	\$4.38
DR02500-1125	2.500	0.500	0.125	1.125	\$5.84	\$5.43	\$5.02	\$4.67	\$4.38
DR02500-1250	2.500	0.500	0.125	1.250	\$5.84	\$5.43	\$5.02	\$4.67	\$4.38
DR02625	2.625	0.500	0.125		\$5.90	\$5.49	\$5.07	\$4.72	\$4.43
DR02750	2.750	0.500	0.125		\$6.15	\$5.72	\$5.29	\$4.92	\$4.61
DR02750-1000	2.750	0.500	0.125	1.000	\$6.35	\$5.91	\$5.46	\$5.08	\$4.76
DR02875	2.875	0.500	0.125		\$6.43	\$5.98	\$5.53	\$5.14	\$4.82
DR03000	3.000	0.625	0.156		\$6.70	\$6.23	\$5.76	\$5.36	\$5.03
PCF3000-500-125-1750	3.000	0.500	0.125	1.750	\$6.90	\$6.42	\$5.93	\$5.52	\$5.18
PCF3000-625-125	3.000	0.625	0.125		\$6.70	\$6.23	\$5.76	\$5.36	\$5.03
DR03000-1875	3.000	0.625	0.156	1.875	\$6.90	\$6.42	\$5.93	\$5.52	\$5.18
DR03125	3.125	0.625	0.156		\$7.00	\$6.51	\$6.02	\$5.60	\$5.25
DR03250	3.250	0.625	0.156		\$7.27	\$6.76	\$6.25	\$5.82	\$5.45
DR03375	3.375	0.625	0.156		\$7.58	\$7.05	\$6.52	\$6.06	\$5.69
DR03500	3.500	0.625	0.156		\$7.82	\$7.27	\$6.73	\$6.26	\$5.87
DR03500-1000	3.500	0.625	0.156	1.000	\$8.02	\$7.46	\$6.90	\$6.42	\$6.02
DR03500-1875	3.500	0.625	0.156	1.875	\$8.02	\$7.46	\$6.90	\$6.42	\$6.02
DR03625	3.625	0.625	0.156		\$8.16	\$7.59	\$7.02	\$6.53	\$6.12
DR03750	3.750	0.625	0.156		\$8.40	\$7.81	\$7.22	\$6.72	\$6.30
DR03875	3.875	0.625	0.156		\$8.71	\$8.10	\$7.49	\$6.97	\$6.53
DR04000	4.000	0.625	0.156		\$9.45	\$8.79	\$8.13	\$7.56	\$7.09
DR04000-2000	4.000	0.625	0.156	2.000	\$9.65	\$8.97	\$8.30	\$7.72	\$7.24
DR04125	4.125	0.625	0.156		\$9.93	\$9.23	\$8.54	\$7.94	\$7.45
DR04250	4.250	0.625	0.156		\$10.28	\$9.56	\$8.84	\$8.22	\$7.71
DR04250-1375	4.250	0.625	0.156	1.375	\$10.48	\$9.75	\$9.01	\$8.38	\$7.86
DR04375	4.375	0.625	0.156		\$10.79	\$10.03	\$9.28	\$8.63	\$8.09
DR04500	4.500	0.625	0.156		\$11.24	\$10.45	\$9.67	\$8.99	\$8.43
DR04500-1875	4.500	0.625	0.156	1.875	\$11.44	\$10.64	\$9.84	\$9.15	\$8.58
DR04750	4.750	0.625	0.156		\$11.62	\$10.81	\$9.99	\$9.30	\$8.72
DR04875	4.875	0.625	0.156		\$12.04	\$11.20	\$10.35	\$9.63	\$9.03
DR05000	5.000	0.750	0.187		\$12.34	\$11.48	\$10.61	\$9.87	\$9.26
DR05000-2250	5.000	0.750	0.187	2.250	\$12.54	\$11.66	\$10.78	\$10.03	\$9.41
DR05250	5.250	0.750	0.187		\$12.81	\$11.91	\$11.02	\$10.25	\$9.61
DR05500	5.500	0.750	0.187		\$13.12	\$12.20	\$11.28	\$10.50	\$9.84
DR05750	5.750	0.750	0.187		\$13.93	\$12.95	\$11.98	\$11.14	\$10.45
DR06000	6.000	0.750	0.187		\$14.69	\$13.66	\$12.63	\$11.75	\$11.02
DR06000-3000	6.000	0.750	0.187	3.000	\$14.89	\$13.85	\$12.81	\$11.91	\$11.17
DR06250	6.250	0.750	0.187		\$15.87	\$14.76	\$13.65	\$12.70	\$11.90
DR06500	6.500	0.750	0.187		\$16.13	\$15.00	\$13.87	\$12.90	\$12.10
DR06750	6.750	0.750	0.187		\$17.09	\$15.89	\$14.70	\$13.67	\$12.82
DR07000	7.000	0.750	0.187		\$17.95	\$16.69	\$15.44	\$14.36	\$13.46
DR07250	7.250	0.750	0.187		\$19.72	\$18.34	\$16.96	\$15.78	\$14.79
DR07500	7.500	0.750	0.187		\$20.63	\$19.19	\$17.74	\$16.50	\$15.47
DR07750	7.750	0.750	0.187		\$23.38	\$21.74	\$20.11	\$18.70	\$17.54
DR08000	8.000	1.000	0.187		\$27.90	\$25.95	\$23.99	\$22.32	\$20.93

We can cut center holes and bolt holes in your piston cups to almost any size!

Set up charge for center holes: \$ 12.00
Holes up to and including 1": \$.50 per hole
Holes over 1": \$ 1.00 per hole

Set up charge for bolt holes: \$ 15.00
bolt holes: \$.50 each

Fabric and Nitrile Piston Cups

Part #	OD (A)	Height (D)	Base Thickness (C)	Ctr. Hole (B)					
					1-99	100-249	250-499	500-999	1000+
DR08500	8.500	1.000	0.187		\$28.89	\$26.87	\$24.85	\$23.11	\$21.67
DR09000	9.000	1.000	0.187		\$30.67	\$28.52	\$26.38	\$24.54	\$23.00
DR09500	9.500	1.000	0.187		\$34.89	\$32.45	\$30.01	\$27.91	\$26.17
DR10000	10.000	1.000	0.187		\$39.43	\$36.67	\$33.91	\$31.54	\$29.57
DR12000	12.000	1.000	0.187		\$71.05	\$66.08	\$61.10	\$56.84	\$53.29
DR14000	14.000	1.000	0.187		\$88.93	\$82.70	\$76.48	\$71.14	\$66.70
MPCF-180X20X5	180mm	20mm	5mm		\$37.98	\$35.32	\$32.66	\$30.38	\$28.49

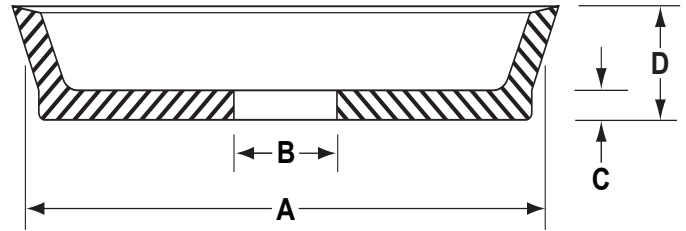
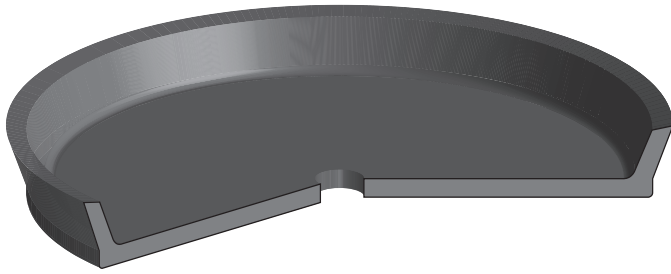
We can cut center holes and bolt holes in your piston cups to almost any size!

Set up charge for center holes: \$ 12.00
 Holes up to and including 1": \$.50 per hole
 Holes over 1": \$ 1.00 per hole

Set up charge for bolt holes: \$ 15.00
 bolt holes: \$.50 each

*Same Day Custom
 Machined Parts
 Available!!!*

Homogeneous Nitrile Piston Cups



Homogeneous nitrile piston cups are used primarily for pneumatic and low pressure hydraulic applications. Most cups are supplied solid. Center holes ("B") and bolt holes are available at an additional charge. Consult sales for price and availability of non-standard sizes.

Temperature: -40° to 250°F

Pressure: 0 to 800 PSI

Part #	OD (A)	Height (D)	Base Thickness (C)	Ctr. Hole (B)					
					1-99	100-249	250-499	500-999	1000+
SC00375	0.375	0.250	0.062		\$1.62	\$1.52	\$1.43	\$1.33	\$1.23
SC00437	0.437	0.250	0.062		\$1.62	\$1.52	\$1.43	\$1.33	\$1.23
SC00500	0.500	0.250	0.062		\$1.62	\$1.52	\$1.43	\$1.33	\$1.23
SC00562	0.562	0.250	0.062		\$1.62	\$1.52	\$1.43	\$1.33	\$1.23
SC00625	0.625	0.281	0.093		\$1.62	\$1.52	\$1.43	\$1.33	\$1.23
SC00687	0.687	0.281	0.093		\$1.62	\$1.52	\$1.43	\$1.33	\$1.23
SC00750	0.750	0.281	0.093		\$1.62	\$1.52	\$1.43	\$1.33	\$1.23
SC00812	0.812	0.281	0.093		\$1.68	\$1.58	\$1.48	\$1.38	\$1.28
SC00875	0.875	0.375	0.093		\$1.68	\$1.58	\$1.48	\$1.38	\$1.28
SC00937	0.937	0.375	0.093		\$1.68	\$1.58	\$1.48	\$1.38	\$1.28
SC01000	1.000	0.437	0.093		\$1.68	\$1.58	\$1.48	\$1.38	\$1.28
SC01125	1.125	0.437	0.093		\$1.77	\$1.66	\$1.56	\$1.45	\$1.35
SC01250	1.250	0.437	0.093		\$1.86	\$1.75	\$1.64	\$1.53	\$1.41
SC01375	1.375	0.437	0.093		\$1.97	\$1.85	\$1.73	\$1.62	\$1.50
SC01500	1.500	0.500	0.125		\$2.02	\$1.90	\$1.78	\$1.66	\$1.54
SC01625	1.625	0.500	0.125		\$2.07	\$1.95	\$1.82	\$1.70	\$1.57
SC01750	1.750	0.500	0.125		\$2.15	\$2.02	\$1.89	\$1.76	\$1.63
SC01875	1.875	0.500	0.125		\$2.21	\$2.08	\$1.94	\$1.81	\$1.68
SC02000	2.000	0.500	0.125		\$2.23	\$2.10	\$1.96	\$1.83	\$1.69
SC02125	2.125	0.500	0.125		\$2.31	\$2.17	\$2.03	\$1.89	\$1.76
SC02125-1	2.125	0.500	0.125		\$2.36	\$2.22	\$2.08	\$1.94	\$1.79
SC02250	2.250	0.500	0.125		\$2.41	\$2.27	\$2.12	\$1.98	\$1.83
PCH2312-437-125-250	2.312	0.437	0.125	0.250	\$2.59	\$2.43	\$2.28	\$2.12	\$1.97
SC02375	2.375	0.500	0.125		\$2.59	\$2.43	\$2.28	\$2.12	\$1.97
SC02437	2.437	0.500	0.125		\$2.68	\$2.52	\$2.36	\$2.20	\$2.04
SC02500	2.500	0.500	0.125		\$2.68	\$2.52	\$2.36	\$2.20	\$2.04
SC02625	2.625	0.500	0.125		\$2.79	\$2.62	\$2.46	\$2.29	\$2.12

We can cut center holes and bolt holes in your piston cups to almost any size!

Set up charge for center holes: \$ 12.00
Holes up to and including 1": \$.50 per hole
Holes over 1": \$ 1.00 per hole

Set up charge for bolt holes: \$ 15.00
bolt holes: \$.50 each

Homogeneous Nitrile Piston Cups

Part #	OD (A)	Height (D)	Base Thickness (C)	Ctr. Hole (B)					
					1—99	100—249	250—499	500—999	1000+
SC02750	2.750	0.500	0.125		\$2.92	\$2.74	\$2.57	\$2.39	\$2.22
SC02875	2.875	0.500	0.125		\$3.33	\$3.13	\$2.93	\$2.73	\$2.53
SC03000	3.000	0.625	0.156		\$4.43	\$4.16	\$3.90	\$3.63	\$3.37
SC03125	3.125	0.625	0.156		\$4.94	\$4.64	\$4.35	\$4.05	\$3.75
SC03250	3.250	0.625	0.156		\$5.08	\$4.78	\$4.47	\$4.17	\$3.86
SC03375	3.375	0.625	0.156		\$5.29	\$4.97	\$4.66	\$4.34	\$4.02
SC03500	3.500	0.625	0.156		\$5.38	\$5.06	\$4.73	\$4.41	\$4.09
PCH3500-250-125	3.500	0.250	0.125		\$5.10	\$4.79	\$4.49	\$4.18	\$3.88
SC03625	3.625	0.625	0.156		\$5.45	\$5.12	\$4.80	\$4.47	\$4.14
SC03750	3.750	0.625	0.156		\$5.80	\$5.45	\$5.10	\$4.76	\$4.41
SC03875	3.875	0.625	0.156		\$6.17	\$5.80	\$5.43	\$5.06	\$4.69
SC04000	4.000	0.625	0.156		\$6.20	\$5.83	\$5.46	\$5.08	\$4.71
PCH4000-500-125	4.000	0.500	0.125		\$6.12	\$5.75	\$5.39	\$5.02	\$4.65
PCH4000-500-125-562	4.000	0.500	0.125	0.562	\$6.32	\$5.94	\$5.56	\$5.18	\$4.80
PCH4000-500-125-1500	4.000	0.500	0.125	1.500	\$6.32	\$5.94	\$5.56	\$5.18	\$4.80
PCH4000-500-125-2750	4.000	0.500	0.125	2.750	\$6.32	\$5.94	\$5.56	\$5.18	\$4.80
SC04250	4.250	0.625	0.156		\$7.29	\$6.85	\$6.42	\$5.98	\$5.54
SC04500	4.500	0.625	0.156		\$7.78	\$7.31	\$6.85	\$6.38	\$5.91
SC04750	4.750	0.625	0.156		\$8.25	\$7.76	\$7.26	\$6.77	\$6.27
SC05000	5.000	0.750	0.187		\$8.42	\$7.91	\$7.41	\$6.90	\$6.40
SC05125	5.125	0.750	0.187		\$8.77	\$8.24	\$7.72	\$7.19	\$6.67
SC05375	5.375	0.750	0.187		\$9.18	\$8.63	\$8.08	\$7.53	\$6.98
SC05625	5.625	0.750	0.187		\$9.83	\$9.24	\$8.65	\$8.06	\$7.47
SC05875	5.875	0.750	0.187		\$10.15	\$9.54	\$8.93	\$8.32	\$7.71
SC06000	6.000	0.750	0.187		\$10.15	\$9.54	\$8.93	\$8.32	\$7.71
SC06125	6.125	0.750	0.187		\$10.94	\$10.28	\$9.63	\$8.97	\$8.31
SC06375	6.375	0.750	0.187		\$11.63	\$10.93	\$10.23	\$9.54	\$8.84
SC06625	6.625	0.750	0.187		\$12.35	\$11.61	\$10.87	\$10.13	\$9.39
SC08000	8.000	1.000	0.187		\$14.03	\$13.19	\$12.35	\$11.50	\$10.66
SC10000	10.000	1.000	0.187		\$19.59	\$18.41	\$17.24	\$16.06	\$14.89
SC11500	11.500	1.000	0.187		\$24.16	\$22.71	\$21.26	\$19.81	\$18.36

We can cut center holes and bolt holes in your piston cups to almost any size!

Set up charge for center holes: \$ 12.00

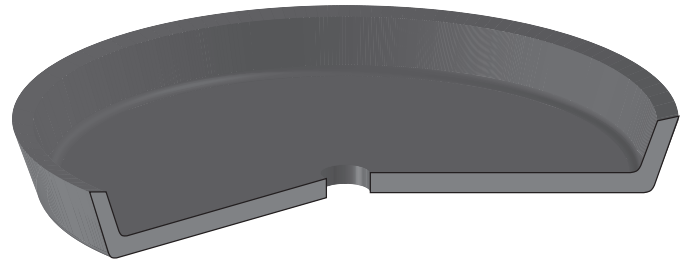
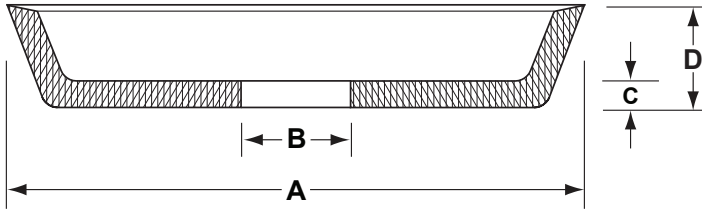
Holes up to and including 1": \$.50 per hole

Holes over 1": \$ 1.00 per hole

Set up charge for bolt holes: \$ 15.00

bolt holes: \$.50 each

Polyurethane Piston Cups



Polyurethane piston cups are molded in 90 Duro and are recommended for hydraulic applications. Most cups are supplied solid. Center holes ("B") and bolt holes are available at an additional charge.

Temperature: -65° to 200°F

Pressure: 0 to 5,000 PSI

Part #	OD (A)	Height (D)	Base Thickness (C)	Ctr. Hole (B)					
					1-99	100-249	250-499	500-999	1000+
PCP-0500-250-062-250	0.500	0.250	0.062	0.250	\$2.78	\$2.61	\$2.45	\$2.28	\$2.11
PCP-1125-375-125-625	1.125	0.375	0.125	0.625	\$3.21	\$3.02	\$2.82	\$2.63	\$2.44
CT1250-437	1.250	0.437	0.094		\$3.54	\$3.33	\$3.12	\$2.90	\$2.69
PCP-1250-500-125-625	1.250	0.500	0.125	0.625	\$3.73	\$3.51	\$3.28	\$3.06	\$2.83
PCP-1500-500-125-500	1.500	0.500	0.125	0.500	\$4.22	\$3.97	\$3.71	\$3.46	\$3.21
PCP-1625-375-125-1000	1.625	0.375	0.125	1.000	\$4.41	\$4.15	\$3.88	\$3.62	\$3.35
PCP-1625-500-125-812	1.625	0.500	0.125	0.812	\$4.56	\$4.29	\$4.01	\$3.74	\$3.47
PCP-2000-500-125-750	2.000	0.500	0.125	0.750	\$4.80	\$4.51	\$4.22	\$3.94	\$3.65
PCP-2250-500-125-1375	2.250	0.500	0.125	1.375	\$4.96	\$4.66	\$4.36	\$4.07	\$3.77
PCP-2500-500-125-875	2.500	0.500	0.125	0.875	\$5.23	\$4.92	\$4.60	\$4.29	\$3.97
PCP-3000-562-156-1875	3.000	0.562	0.156	1.875	\$6.52	\$6.13	\$5.74	\$5.35	\$4.96
PCP-3500-625-156-500	3.500	0.625	0.156	0.500	\$8.47	\$7.96	\$7.45	\$6.95	\$6.44










We can cut center holes and bolt holes in your piston cups to almost any size!

Set up charge for center holes: \$ 12.00
Holes up to and including 1": \$.50 per hole
Holes over 1": \$ 1.00 per hole

Set up charge for bolt holes: \$ 15.00
bolt holes: \$.50 each

Made in America

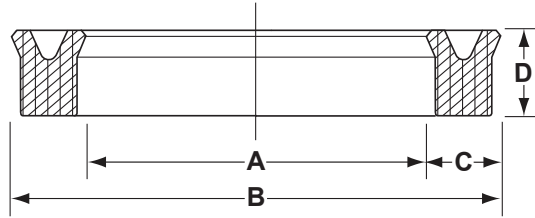
U-Cups

	MA25 Symmetrical Urethane U-Cups–Metric.....	28
	MA28 Urethane Piston U-Cups–Metric	28
	MA30 Urethane Rod U-Cups–Metric.....	28
	Symmetrical Urethane U-Cups–Inch	29
 ·  · 	Symmetrical Nitrile U-Cups–Inch.....	29
 · 	Fabric Reinforced Nitrile U-Cups–Inch & Metric....	30

MA25, MA28, MA30 U-Cups–Metric



MA25



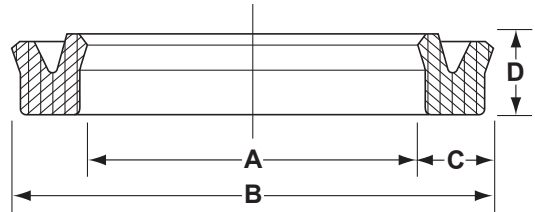
MA25 series metric urethane u-cups are symmetrical in design and may be used as rod or piston seals. Back-beveled knife-trimmed lips ensure a good seal with minimal friction.

Temperature: -50°F to 230°F

Pressure: 0 to 5800 psi



MA28



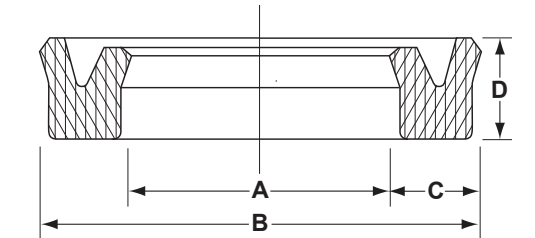
MA28 series metric urethane u-cups are non-symmetrical in design and are meant to be used only for reciprocating piston seals. They are manufactured slightly smaller in diameter than nominal dimensions. This ensures a tight fit when snapped over the piston. Good stability and decreased heel drag, resulting in lower friction, are the prime features of this seal.

Temperature: -40°F to 230°F

Pressure: 0 to 5000 psi



MA30



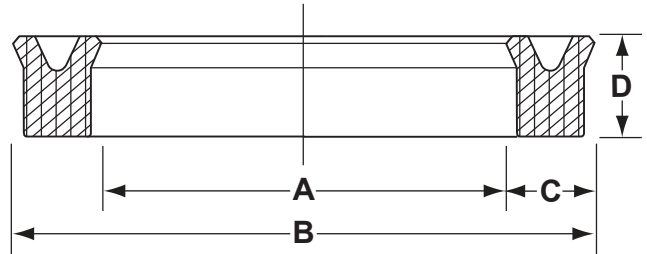
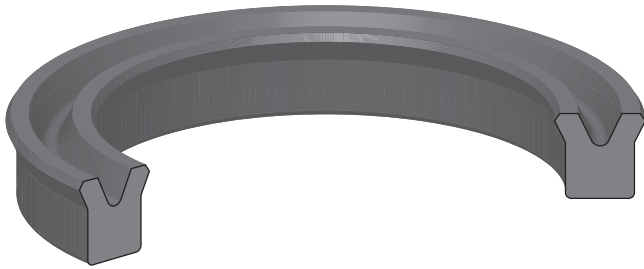
MA30 series metric urethane u-cups are non-symmetrical in design and are meant only to be used for reciprocating hydraulic rod applications. They are manufactured slightly larger in diameter than nominal dimensions. This ensures a tight fit when snapped into the groove. Good stability and decreased heel drag resulting in lower friction are the prime features of this seal.

Temperature: -40°F to 230°F

Pressure: 0 to 5800 psi

Part #	ID	OD	HT	1-99	100-249	250-499	500-999	1000+
MA25-10x16x6	10	16	6	\$3.31	\$3.15	\$3.03	\$2.93	\$2.87
MA25-22x40x12	22	40	12	\$4.39	\$4.18	\$4.02	\$3.88	\$3.81
MA30-32x47x10	32	47	10	\$4.73	\$4.50	\$4.33	\$4.18	\$4.10
MA25-35x43x6	35	43	6	\$4.23	\$4.03	\$3.88	\$3.74	\$3.67
MA28-43x63x12	43	63	12	\$5.84	\$5.56	\$5.35	\$5.17	\$5.07

Symmetrical Urethane U-Cups-Inch



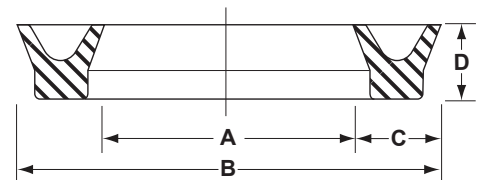
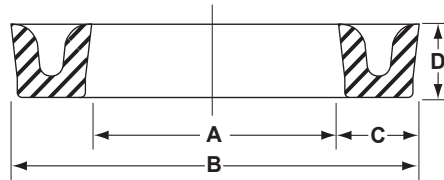
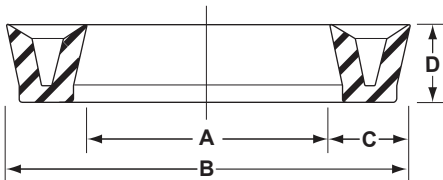
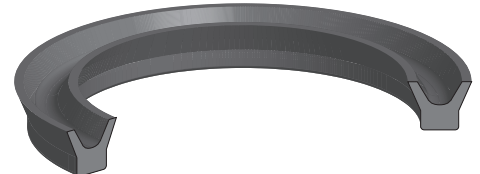
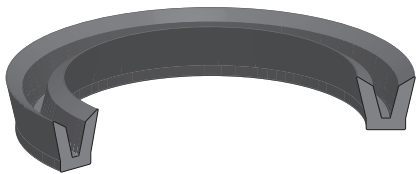
US series urethane u-cups are symmetrical in design and may be used as rod or piston seals. Back-beveled knife-trimmed lips ensure a good seal with minimal friction.

Temperature: -65°F to 200°F

Pressure: 0 to 5000 psi

Part #	ID	OD	HT	CS	1-99	100-249	250-499	500-999	1000+
US-12501000	1.000	1.250	0.125	0.125	\$2.48	\$2.26	\$2.03	\$1.66	\$1.49
US-25002000-375	2.000	2.500	0.375	0.250	\$2.89	\$2.63	\$2.37	\$1.94	\$1.73
US-25002500-375	2.500	3.000	0.375	0.250	\$3.46	\$3.15	\$2.84	\$2.32	\$2.08
US-25002625-375	2.625	3.125	0.375	0.250	\$3.89	\$3.54	\$3.19	\$2.61	\$2.33
US-25002750-375	2.750	3.250	0.375	0.250	\$3.93	\$3.58	\$3.22	\$2.63	\$2.36
US-31200875-240-1	0.875	1.500	0.240	0.312	\$3.18	\$2.89	\$2.61	\$2.13	\$1.91
US-50005000-750-2	5.000	6.000	0.750	0.500	\$9.96	\$9.06	\$8.17	\$6.67	\$5.98

Nitrile U-Cups-Inch



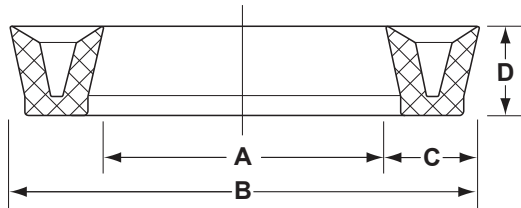
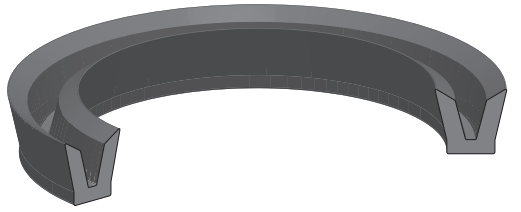
Homogeneous Nitrile U-Cups are made from 80 durometer nitrile and may come in one of several profiles. All may be used for rod or piston seals in pneumatic or low pressure hydraulic applications.

Temperature: -25°F to 225°F

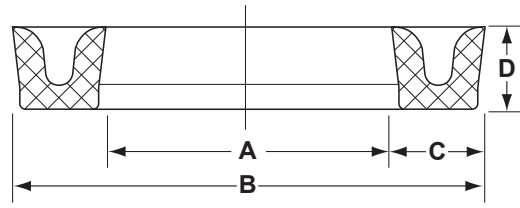
Pressure: 0 to 2200 psi

Part #	ID	OD	Height	CS	1-99	100-249	250-499	500-999	1000+
UCH12501687-250	1.250	1.687	0.250	0.218	\$2.28	\$2.14	\$2.03	\$1.94	\$1.85
UCH12502000-500	1.250	2.000	0.500	0.375	\$3.51	\$3.30	\$3.12	\$2.98	\$2.84
UCH12502500	1.250	2.500	0.625	0.625	\$5.69	\$5.35	\$5.06	\$4.84	\$4.61
UCH1062512312-1125	10.625	12.312	1.125	0.843	\$39.44	\$37.07	\$35.10	\$33.52	\$31.95

Fabric Reinforced Nitrile U-Cups—Inch & Metric



Rectangular Profile



Contoured Profile (-1)

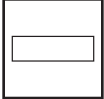
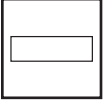
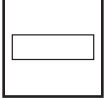
Cotton-Duck reinforced nitrile u-cups wear extremely well in heavy duty hydraulic cylinder applications. The wicking action of the cotton-duck material keeps the seal lubricated. The lip seal design also contributes to low friction.

Temperature: -20°F to 200°F

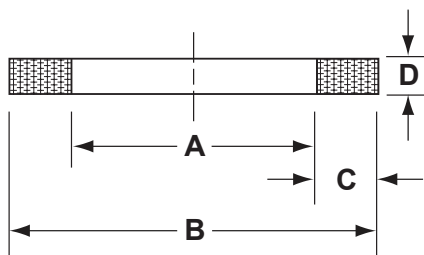
Pressure: 0 to 3500 psi

Part #	ID	OD	Height	CS	1-99	100-249	250-499	500-999	1000+
UCF17502500-375-1	1.750	2.500	0.375	0.375	\$4.90	\$4.61	\$4.36	\$4.17	\$3.97
UCF22503000-375-1	2.250	3.000	0.375	0.375	\$5.11	\$4.80	\$4.55	\$4.34	\$4.14
UCF22503000-500	2.250	3.000	0.500	0.375	\$5.24	\$4.93	\$4.66	\$4.45	\$4.24
UCF25003250-375-1	2.500	3.250	0.375	0.375	\$5.40	\$5.08	\$4.81	\$4.59	\$4.37
UCF32504000-375-1	3.250	4.000	0.375	0.375	\$6.52	\$6.13	\$5.80	\$5.54	\$5.28
UCF32504000-500	3.250	4.000	0.500	0.375	\$6.70	\$6.30	\$5.96	\$5.70	\$5.43
UCF40005000-500-1	4.000	5.000	0.500	0.500	\$10.77	\$10.12	\$9.59	\$9.15	\$8.72
UCF41255000-437	4.125	5.000	0.437	0.437	\$10.40	\$9.78	\$9.26	\$8.84	\$8.42
UCF42505000-500	4.250	5.000	0.500	0.375	\$8.53	\$8.02	\$7.59	\$7.25	\$6.91
UCF50006000-750-1	5.000	6.000	0.750	0.500	\$13.10	\$12.31	\$11.66	\$11.14	\$10.61
UCF52506000-500	5.250	6.000	0.500	0.375	\$9.99	\$9.39	\$8.89	\$8.49	\$8.09
UCF52506125-437-1	5.250	6.125	0.437	0.437	\$12.64	\$11.88	\$11.25	\$10.74	\$10.24
UCF55126063-433-1	5.512	6.063	0.433	0.275	\$12.08	\$11.36	\$10.75	\$10.27	\$9.78
UCF62507000-500	6.250	7.000	0.500	0.375	\$13.49	\$12.68	\$12.01	\$11.47	\$10.93
UCF72508000-500	7.250	8.000	0.500	0.375	\$14.95	\$14.05	\$13.31	\$12.71	\$12.11
MUCF-75x100x12.5	75mm	100mm	12.5mm	12.5mm	\$7.78	\$7.31	\$6.92	\$6.61	\$6.30

Backup Rings

	Hytrel® Backup Rings-Inch.....	32
	Nylon Backup Rings and Shims-Inch.....	33
	Hytrel® Backup Rings-Metric.....	34

Hytrel® Backup Rings for U-Cups-Inch



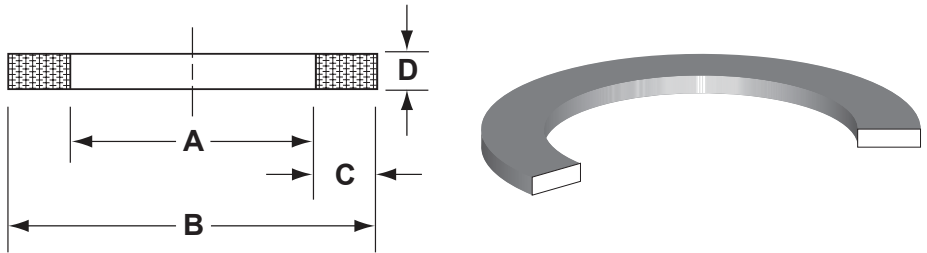
These Hytrel® rings are supplied solid and are used normally to backup rubber u-cups. They are highly extrusion resistant and are compatible with water and petroleum based fluids up to temperatures of 275° F. Unlike TFE, they can be stretched over larger diameters and will quickly return to their original size.

Temperature: -40° to 275°F

Part #	ID	OD	HT	CS	1-99	100-249	250-499	500-999	1000+
BU-1000-1312-062-H	1.000	1.312	0.062	0.156	\$1.44	\$1.36	\$1.29	\$1.23	\$1.18
BU-1187-1500-062-H	1.187	1.500	0.062	0.156	\$1.44	\$1.35	\$1.28	\$1.22	\$1.18
BU-1187-1687-062-H	1.187	1.687	0.062	0.250	\$2.39	\$2.25	\$2.13	\$2.03	\$1.96
BU-1375-1687-062-H	1.375	1.687	0.062	0.156	\$1.49	\$1.40	\$1.32	\$1.26	\$1.22
BU-1625-2000-062-H	1.625	2.000	0.062	0.187	\$1.58	\$1.48	\$1.40	\$1.34	\$1.29
BU-1750-2125-062-H	1.750	2.125	0.062	0.187	\$1.62	\$1.52	\$1.44	\$1.38	\$1.33
BU-2000-2375-062-H	2.000	2.375	0.062	0.187	\$1.67	\$1.57	\$1.48	\$1.42	\$1.37
BU-2062-2562-093-H	2.062	2.562	0.093	0.250	\$2.48	\$2.33	\$2.20	\$2.10	\$2.03
BU-2125-2500-062-H	2.125	2.500	0.062	0.187	\$1.71	\$1.61	\$1.52	\$1.45	\$1.40
BU-2500-2875-062-H	2.500	2.875	0.062	0.187	\$1.76	\$1.65	\$1.56	\$1.49	\$1.44
BU-2812-3250-062-H	2.812	3.250	0.062	0.218	\$1.85	\$1.73	\$1.64	\$1.57	\$1.51
BU-3000-3750-093-H	3.000	3.750	0.093	0.375	\$2.61	\$2.45	\$2.32	\$2.22	\$2.14
BU-3500-4000-062-H	3.500	4.000	0.062	0.250	\$2.57	\$2.41	\$2.28	\$2.18	\$2.10
BU-4500-5000-062-H	4.500	5.000	0.062	0.250	\$2.84	\$2.66	\$2.52	\$2.41	\$2.32
BU-5375-6000-062-H	5.375	6.000	0.062	0.312	\$3.51	\$3.30	\$3.12	\$2.98	\$2.88
BU-5437-6000-062-H	5.437	6.000	0.062	0.281	\$3.47	\$3.26	\$3.08	\$2.95	\$2.84
BU-7375-8000-062-H	7.375	8.000	0.062	0.312	\$6.03	\$5.67	\$5.37	\$5.13	\$4.94
BU-9312-10000-062-H	9.312	10.000	0.062	0.343	\$9.95	\$9.35	\$8.85	\$8.45	\$8.15

Nylon Backup Rings and Shims-Inch

These nylon backup rings and shims are primarily used to back up u-cups, and shim vee packing sets. They are supplied solid or split for easier installation. They are extremely resistant to extrusion, abrasion and fatigue. Compatible with many chemicals, solvents and oils, they are a good choice for an economical backup.



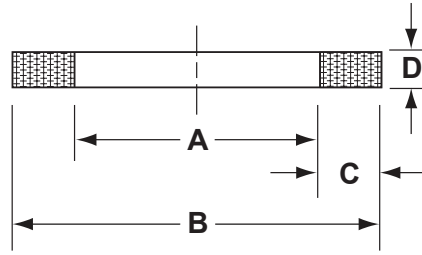
-65°F to +275°F

Part #	ID	OD	HT	CS	1-99	100-249	250-499	500-999	1000+
BU-2500-3000-075-N@1	2.500	3.000	0.075	0.250	\$1.60	\$1.52	\$1.44	\$1.36	\$1.28
BU-2750-3375-062-N1	2.750	3.375	0.062	0.312	\$1.76	\$1.67	\$1.58	\$1.49	\$1.40
BU-3750-4375-062-N1	3.750	4.375	0.062	0.312	\$1.94	\$1.84	\$1.74	\$1.64	\$1.55
BU-4250-4750-075-N@1	4.250	4.750	0.075	0.250	\$2.12	\$2.01	\$1.90	\$1.80	\$1.69
BU-4500-5000-125-N@1	4.500	5.000	0.125	0.250	\$2.30	\$2.18	\$2.07	\$1.95	\$1.84
BU-4750-5375-062-N1	4.750	5.375	0.062	0.312	\$2.39	\$2.27	\$2.15	\$2.03	\$1.91
BU-5000-6000-125-N1	5.000	6.000	0.125	0.500	\$2.66	\$2.52	\$2.39	\$2.26	\$2.12
BU-5500-6000-125-N-S	5.500	6.000	0.125	0.250	\$2.70	\$2.56	\$2.43	\$2.29	\$2.16
BU-5750-6375-062-N1	5.750	6.375	0.062	0.312	\$2.79	\$2.65	\$2.51	\$2.37	\$2.23
BU-6000-6750-125-N-S	6.000	6.750	0.125	0.375	\$3.47	\$3.29	\$3.12	\$2.95	\$2.77
BU-6500-7500-125-N-S	6.500	7.500	0.125	0.500	\$4.23	\$4.02	\$3.81	\$3.60	\$3.38
BU-6750-7375-062-N1	6.750	7.375	0.062	0.312	\$3.11	\$2.95	\$2.79	\$2.64	\$2.48
BU-7905-8543-062-N1	7.905	8.543	0.062	0.319	\$3.38	\$3.21	\$3.04	\$2.87	\$2.70
BU-8500-9500-125-N-S	8.500	9.500	0.125	0.500	\$5.81	\$5.51	\$5.22	\$4.93	\$4.64
BU-9375-10000-062-N1	9.375	10.000	0.062	0.312	\$3.78	\$3.59	\$3.40	\$3.21	\$3.02

Suffix @1 or -S Designates split

*Same Day Custom
Machined Parts
Available!!!*

Hytrel® Backup Rings—Metric



Made from 55 shore D Hytrel®, these rings are extremely resistant to extrusion, compatible with water and petroleum based fluids, and can be used at temperatures to 275° F. Unlike TFE, they can be stretched over larger diameters and will return quickly to their original size.

Temperature: -40° to 275°F

Part #	ID	OD	HT	1-24	25-49	50-99	100-249	250+
MBH-20x25x1.5	20	25	1.5	\$1.98	\$1.84	\$1.72	\$1.58	\$1.50
MBH-22x30x1.5	22	30	1.5	\$2.47	\$2.30	\$2.15	\$1.98	\$1.88
MBH-25x30x1.5	25	30	1.5	\$2.01	\$1.87	\$1.75	\$1.61	\$1.53
MBH-25x33x1.5	25	33	1.5	\$2.55	\$2.37	\$2.22	\$2.04	\$1.94
MBH-30x35x1.5	30	35	1.5	\$2.04	\$1.90	\$1.77	\$1.63	\$1.55
MBH-30x40x1.5	30	40	1.5	\$2.60	\$2.42	\$2.26	\$2.08	\$1.98
MBH-35x40x1.5	35	40	1.5	\$2.07	\$1.93	\$1.80	\$1.66	\$1.57
MBH-35x45x1.5	35	45	1.5	\$2.69	\$2.50	\$2.34	\$2.15	\$2.04
MBH-35.5x45x1.5	35.5	45	1.5	\$2.69	\$2.50	\$2.34	\$2.15	\$2.04
MBH-38x50x1.5	38	50	1.5	\$2.93	\$2.72	\$2.55	\$2.34	\$2.23
MBH-39x45x1.5	39	45	1.5	\$2.63	\$2.45	\$2.29	\$2.10	\$2.00
MBH-40x45x1.5	40	45	1.5	\$2.10	\$1.95	\$1.83	\$1.68	\$1.60
MBH-40x50x1.5	40	50	1.5	\$2.74	\$2.55	\$2.38	\$2.19	\$2.08
MBH-40x53x2.5	40	53	2.5	\$2.99	\$2.78	\$2.60	\$2.39	\$2.27
MBH-42x55x2.5	42	55	2.5	\$3.11	\$2.89	\$2.71	\$2.49	\$2.36
MBH-44x50x1.5	44	50	1.5	\$2.69	\$2.50	\$2.34	\$2.15	\$2.04
MBH-45x50x1.5	45	50	1.5	\$2.14	\$1.99	\$1.86	\$1.71	\$1.63
MBH-45x55x1.5	45	55	1.5	\$2.79	\$2.59	\$2.43	\$2.23	\$2.12
MBH-49x55x1.5	49	55	1.5	\$2.75	\$2.56	\$2.39	\$2.20	\$2.09
MBH-50x55x1.5	50	55	1.5	\$2.17	\$2.02	\$1.89	\$1.74	\$1.65
MBH-50x60x1.5	50	60	1.5	\$2.85	\$2.65	\$2.48	\$2.28	\$2.17
MBH-50x63x2.5	50	63	2.5	\$3.32	\$3.09	\$2.89	\$2.66	\$2.52
MBH-50x65x2.5	50	65	2.5	\$3.59	\$3.34	\$3.12	\$2.87	\$2.73
MBH-53x63x1.5	53	63	1.5	\$2.90	\$2.70	\$2.52	\$2.32	\$2.20
MBH-55x60x1.5	55	60	1.5	\$2.21	\$2.06	\$1.92	\$1.77	\$1.68
MBH-55x65x1.5	55	65	1.5	\$2.93	\$2.72	\$2.55	\$2.34	\$2.23
MBH-55x70x3	55	70	3	\$3.77	\$3.51	\$3.28	\$3.02	\$2.87
MBH-56x66x1.5	56	66	1.5	\$2.95	\$2.74	\$2.57	\$2.36	\$2.24
MBH-58x63x1.5	58	63	1.5	\$2.25	\$2.09	\$1.96	\$1.80	\$1.71
MBH-60x65x1.5	60	65	1.5	\$2.28	\$2.12	\$1.98	\$1.82	\$1.73
MBH-60x70x1.5	60	70	1.5	\$2.99	\$2.78	\$2.60	\$2.39	\$2.27
MBH-60x73x3	60	73	3	\$3.87	\$3.60	\$3.37	\$3.10	\$2.94
MBH-60x75x3	60	75	3	\$3.91	\$3.64	\$3.40	\$3.13	\$2.97
MBH-65x70x1.5	65	70	1.5	\$2.32	\$2.16	\$2.02	\$1.86	\$1.76
MBH-65x75x2	65	75	2	\$3.04	\$2.83	\$2.64	\$2.43	\$2.31
MBH-65x78x3	65	78	3	\$3.99	\$3.71	\$3.47	\$3.19	\$3.03
MBH-65x80x3	65	80	3	\$4.05	\$3.77	\$3.52	\$3.24	\$3.08
MBH-70x75x1.5	70	75	1.5	\$2.36	\$2.19	\$2.05	\$1.89	\$1.79
MBH-70x80x2	70	80	2	\$3.09	\$2.87	\$2.69	\$2.47	\$2.35
MBH-70x83x3	70	83	3	\$4.13	\$3.84	\$3.59	\$3.30	\$3.14
MBH-70x85x3	70	85	3	\$4.21	\$3.92	\$3.66	\$3.37	\$3.20

Hytrel® Backup Rings–Metric

Part #	ID	OD	HT	1-24	25-49	50-99	100-249	250+
MBH-75x80x1.5	75	80	1.5	\$2.41	\$2.24	\$2.10	\$1.93	\$1.83
MBH-75x85x2	75	85	2	\$3.14	\$2.92	\$2.73	\$2.51	\$2.39
MBH-75x88x3	75	88	3	\$4.27	\$3.97	\$3.71	\$3.42	\$3.25
MBH-75x90x3	75	90	3	\$4.38	\$4.07	\$3.81	\$3.50	\$3.33
MBH-80x85x1.5	80	85	1.5	\$2.46	\$2.29	\$2.14	\$1.97	\$1.87
MBH-80x90x2	80	90	2	\$3.19	\$2.97	\$2.78	\$2.55	\$2.42
MBH-80x93x3	80	93	3	\$4.40	\$4.09	\$3.83	\$3.52	\$3.34
MBH-80x95x3	80	95	3	\$4.50	\$4.19	\$3.92	\$3.60	\$3.42
MBH-80x100x3	80	100	3	\$7.26	\$6.75	\$6.32	\$5.81	\$5.52
MBH-85x90x1.5	85	90	1.5	\$2.51	\$2.33	\$2.18	\$2.01	\$1.91
MBH-85x95x2	85	95	2	\$3.25	\$3.02	\$2.83	\$2.60	\$2.47
MBH-85x100x3	85	100	3	\$4.72	\$4.39	\$4.11	\$3.78	\$3.59
MBH-90x95x1.5	90	95	1.5	\$2.57	\$2.39	\$2.24	\$2.06	\$1.95
MBH-90x100x2	90	100	2	\$3.31	\$3.08	\$2.88	\$2.65	\$2.52
MBH-90x105x3	90	105	3	\$4.93	\$4.58	\$4.29	\$3.94	\$3.75
MBH-90x110x3	90	110	3	\$7.48	\$6.96	\$6.51	\$5.98	\$5.68
MBH-95x100x1.5	95	100	1.5	\$2.63	\$2.45	\$2.29	\$2.10	\$2.00
MBH-95x105x2	95	105	2	\$3.37	\$3.13	\$2.93	\$2.70	\$2.56
MBH-95x110x3	95	110	3	\$5.19	\$4.83	\$4.52	\$4.15	\$3.94
MBH-95x115x3	95	115	3	\$7.69	\$7.15	\$6.69	\$6.15	\$5.84
MBH-100x105x1.5	100	105	1.5	\$2.69	\$2.50	\$2.34	\$2.15	\$2.04
MBH-100x110x2	100	110	2	\$3.44	\$3.20	\$2.99	\$2.75	\$2.61
MBH-100x115x3	100	115	3	\$5.32	\$4.95	\$4.63	\$4.26	\$4.04
MBH-100x120x3	100	120	3	\$7.90	\$7.35	\$6.87	\$6.32	\$6.00
MBH-105x110x1.5	105	110	1.5	\$2.76	\$2.57	\$2.40	\$2.21	\$2.10
MBH-105x115x2	105	115	2	\$3.51	\$3.26	\$3.05	\$2.81	\$2.67
MBH-105x120x3	105	120	3	\$5.48	\$5.10	\$4.77	\$4.38	\$4.16
MBH-105x125x3	105	125	3	\$8.17	\$7.60	\$7.11	\$6.54	\$6.21
MBH-110x115x1.5	110	115	1.5	\$2.84	\$2.64	\$2.47	\$2.27	\$2.16
MBH-110x120x2	110	120	2	\$3.58	\$3.33	\$3.11	\$2.86	\$2.72
MBH-110x125x3	110	125	3	\$5.65	\$5.25	\$4.92	\$4.52	\$4.29
MBH-110x130x3	110	130	3	\$8.45	\$7.86	\$7.35	\$6.76	\$6.42
MBH-115x120x1.5	115	120	1.5	\$2.94	\$2.73	\$2.56	\$2.35	\$2.23
MBH-115x125x2	115	125	2	\$3.67	\$3.41	\$3.19	\$2.94	\$2.79
MBH-120x125x1.5	120	125	1.5	\$3.01	\$2.80	\$2.62	\$2.41	\$2.29
MBH-120x130x2	120	130	2	\$3.76	\$3.50	\$3.27	\$3.01	\$2.86
MBH-120x135x3	120	135	3	\$5.88	\$5.47	\$5.12	\$4.70	\$4.47
MBH-120x140x3	120	140	3	\$8.69	\$8.08	\$7.56	\$6.95	\$6.60
MBH-125x130x1.5	125	130	1.5	\$3.08	\$2.86	\$2.68	\$2.46	\$2.34
MBH-125x135x2	125	135	2	\$3.88	\$3.61	\$3.38	\$3.10	\$2.95
MBH-125x140x2.75	125	140	2.75	\$6.03	\$5.61	\$5.25	\$4.82	\$4.58
MBH-130x135x1.5	130	135	1.5	\$3.17	\$2.95	\$2.76	\$2.54	\$2.41
MBH-130x140x2	130	140	2	\$4.01	\$3.73	\$3.49	\$3.21	\$3.05
MBH-130x145x2.75	130	145	2.75	\$6.19	\$5.76	\$5.39	\$4.95	\$4.70
MBH-130x150x3	130	150	3	\$8.88	\$8.26	\$7.73	\$7.10	\$6.75
MBH-135x140x1.5	135	140	1.5	\$3.26	\$3.03	\$2.84	\$2.61	\$2.48
MBH-135x145x2	135	145	2	\$4.13	\$3.84	\$3.59	\$3.30	\$3.14
MBH-135x150x2.75	135	150	2.75	\$6.36	\$5.91	\$5.53	\$5.09	\$4.83
MBH-140x145x1.5	140	145	1.5	\$3.37	\$3.13	\$2.93	\$2.70	\$2.56
MBH-140x150x2	140	150	2	\$4.25	\$3.95	\$3.70	\$3.40	\$3.23
MBH-140x155x2.75	140	155	2.75	\$6.52	\$6.06	\$5.67	\$5.22	\$4.96
MBH-140x160x3	140	160	3	\$9.47	\$8.81	\$8.24	\$7.58	\$7.20
MBH-145x150x1.5	145	150	1.5	\$3.51	\$3.26	\$3.05	\$2.81	\$2.67
MBH-145x155x2	145	155	2	\$4.38	\$4.07	\$3.81	\$3.50	\$3.33
MBH-145x160x2.75	145	160	2.75	\$6.70	\$6.23	\$5.83	\$5.36	\$5.09

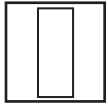
Hytrel® Backup Rings–Metric

Part #	ID	OD	HT	1-24	25-49	50-99	100-249	250+
MBH-150x160x2	150	160	2	\$4.52	\$4.20	\$3.93	\$3.62	\$3.44
MBH-150x165x2.75	150	165	2.75	\$6.93	\$6.44	\$6.03	\$5.54	\$5.27
MBH-150x170x3	150	170	3	\$9.75	\$9.07	\$8.48	\$7.80	\$7.41
MBH-155x165x2	155	165	2	\$4.66	\$4.33	\$4.05	\$3.73	\$3.54
MBH-155x170x2.75	155	170	2.75	\$7.22	\$6.71	\$6.28	\$5.78	\$5.49
MBH-160x170x2	160	170	2	\$4.81	\$4.47	\$4.18	\$3.85	\$3.66
MBH-160x175x2.75	160	175	2.75	\$7.45	\$6.93	\$6.48	\$5.96	\$5.66
MBH-160x180x3	160	180	3	\$10.82	\$10.06	\$9.41	\$8.66	\$8.22
MBH-165x175x2	165	175	2	\$5.03	\$4.68	\$4.38	\$4.02	\$3.82
MBH-165x180x2.75	165	180	2.75	\$7.66	\$7.12	\$6.66	\$6.13	\$5.82
MBH-170x180x2	170	180	2	\$5.17	\$4.81	\$4.50	\$4.14	\$3.93
MBH-170x185x2.75	170	185	2.75	\$7.84	\$7.29	\$6.82	\$6.27	\$5.96
MBH-175x185x2	175	185	2	\$5.29	\$4.92	\$4.60	\$4.23	\$4.02
MBH-175x190x2.75	175	190	2.75	\$8.03	\$7.47	\$6.99	\$6.42	\$6.10
MBH-180x190x2	180	190	2	\$5.40	\$5.02	\$4.70	\$4.32	\$4.10
MBH-180x195x2.75	180	195	2.75	\$8.36	\$7.77	\$7.27	\$6.69	\$6.35
MBH-180x200x3	180	200	3	\$11.53	\$10.72	\$10.03	\$9.22	\$8.76
MBH-185x195x2	185	195	2	\$5.55	\$5.16	\$4.83	\$4.44	\$4.22
MBH-185x200x2.75	185	200	2.75	\$8.51	\$7.91	\$7.40	\$6.81	\$6.47
MBH-190x200x2	190	200	2	\$5.68	\$5.28	\$4.94	\$4.54	\$4.32
MBH-190x205x2.75	190	205	2.75	\$8.90	\$8.28	\$7.74	\$7.12	\$6.76
MBH-200x210x2	200	210	2	\$5.79	\$5.38	\$5.04	\$4.63	\$4.40
MBH-200x215x2.75	200	215	2.75	\$9.14	\$8.50	\$7.95	\$7.31	\$6.95
MBH-205x220x2.75	205	220	2.75	\$9.35	\$8.70	\$8.13	\$7.48	\$7.11
MBH-210x220x2	210	220	2	\$5.91	\$5.50	\$5.14	\$4.73	\$4.49
MBH-210x225x2.75	210	225	2.75	\$9.59	\$8.92	\$8.34	\$7.67	\$7.29
MBH-220x230x2	220	230	2	\$6.03	\$5.61	\$5.25	\$4.82	\$4.58
MBH-225x240x2.75	225	240	2.75	\$9.84	\$9.15	\$8.56	\$7.87	\$7.48
MBH-230x240x2	230	240	2	\$6.29	\$5.85	\$5.47	\$5.03	\$4.78
MBH-235x250x2.75	235	250	2.75	\$10.17	\$9.46	\$8.85	\$8.14	\$7.73
MBH-240x250x2	240	250	2	\$6.48	\$6.03	\$5.64	\$5.18	\$4.92
MBH-245x260x2.75	245	260	2.75	\$10.53	\$9.79	\$9.16	\$8.42	\$8.00
MBH-250x260x2	250	260	2	\$6.63	\$6.17	\$5.77	\$5.30	\$5.04
MBH-260x270x2	260	270	3	\$6.79	\$6.31	\$5.91	\$5.43	\$5.16
MBH-265x280x2.75	265	280	2.75	\$10.90	\$10.14	\$9.48	\$8.72	\$8.28
MBH-270x280x2	270	280	2	\$6.99	\$6.50	\$6.08	\$5.59	\$5.31
MBH-280x290x2	280	290	2	\$7.23	\$6.72	\$6.29	\$5.78	\$5.49
MBH-290x300x2	290	300	2	\$7.91	\$7.36	\$6.88	\$6.33	\$6.01

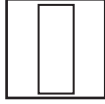
One Stop Shopping...

...For All Your Sealing Needs

Wearbands



..... Nylon Wearband Formulas..... 38



..... Nylon Wearbands - Inch & Metric 38

Nylon Wearband Formulas

Formula for Calculating Piston Wear Ring Grooves

$$\begin{aligned} \text{Maximum Groove Diameter} &= \text{Minimum Bore Diameter} - \text{Maximum Wear Ring Cross Section} \\ \text{Tolerance} &= \begin{matrix} +.000" \\ -.005" \end{matrix} \end{aligned}$$

$$\begin{aligned} \text{Groove Length} &= \text{Actual Part Length} + .010" \\ \text{Tolerance} &= \begin{matrix} +.010" \\ -.000" \end{matrix} \end{aligned}$$

NOTES:

1 - The piston diameter will not correspond to diameters called out for piston seals. Additional clearances are required for wear ring use. Piston seal material should provide sufficient extrusion resistance to prevent extrusion of the piston seal with the increase in diametral clearance caused by wear ring use.

2 - Radii **MUST NOT EXCEED .010" MAXIMUM** at corners on bottom of piston wear ring gland.

Formula for Calculating Rod Wear Ring Grooves

$$\begin{aligned} \text{Minimum Groove Diameter} &= \text{Maximum Rod Diameter} + \text{Maximum Wear Ring Cross Section} \\ \text{Tolerance} &= \begin{matrix} +.003" \\ -.000" \end{matrix} \end{aligned}$$

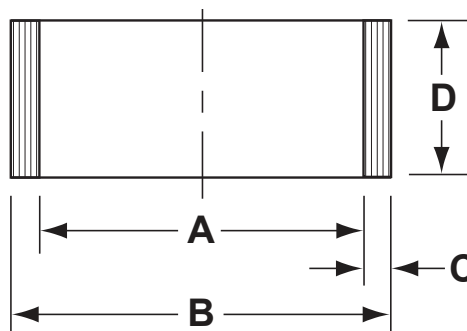
$$\begin{aligned} \text{Groove Length} &= \text{Actual Part Length} + .010" \\ \text{Tolerance} &= \begin{matrix} +.010" \\ -.000" \end{matrix} \end{aligned}$$

NOTES:

1 - The rod throat diameter is a new diameter over and above the diameter which is called out for the rod seal. Additional diametral clearances are required as noted for the wear ring to function properly. Since a larger clearance gap results, an extrusion resistant material should be specified for the rod seal when using wear rings.

2 - Radii **MUST NOT EXCEED .010" MAXIMUM** at corners on bottom of piston wear ring gland.

Nylon Wearbands-Inch & Metric



Wear rings are used to prevent metal to metal contact of moving parts in hydraulic and pneumatic cylinders. They also center the piston and rod for optimum seal life. The glass-filled nylon material offers compressive strengths similar to most metals used for this purpose and will ingest contaminants such as metal chips, thus avoiding scoring and seal damage.

Nylon wearbands are easily cut down from larger sizes to fit any size piston or rod. Consult sales for sizes not shown.

"B" Suffix = Butt Cut

Part #	OD	HT	CS	1 - 24	25 - 49	50 - 99	100 - 249	250 +
WB0225-0125-125-N1-B	2.25	0.125	0.125	\$1.43	\$1.36	\$1.29	\$1.22	\$1.14
WB0225-0375-125-N1-B	2.25	0.375	0.125	\$1.69	\$1.61	\$1.52	\$1.44	\$1.35
WB0300-0125-125-N1-B	3.00	0.125	0.125	\$1.51	\$1.43	\$1.36	\$1.28	\$1.21
WB0400-0125-125-N1-B	4.00	0.125	0.125	\$1.62	\$1.54	\$1.46	\$1.38	\$1.30
MWB-140x17.5x6	140mm	17.5mm	6mm	\$9.87	\$9.38	\$8.88	\$8.39	\$7.90
MWB-160x22.5x4	160mm	22.5mm	4mm	\$11.35	\$10.78	\$10.22	\$9.65	\$9.08

Wipers



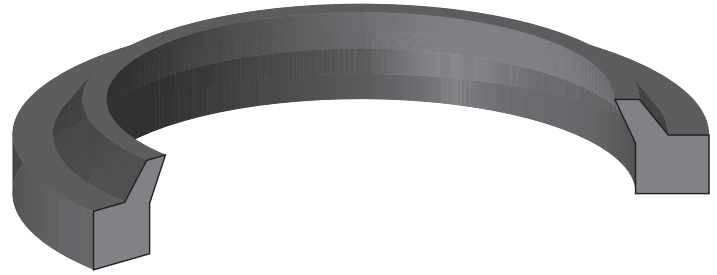
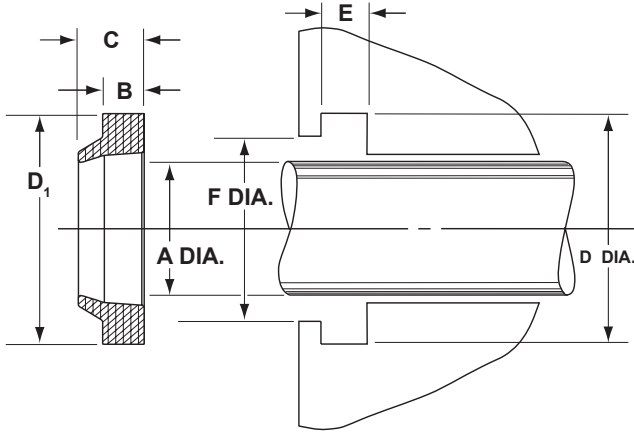
.....Non-Standard Wipers 40



.....Telescoping Cylinder Wipers 41



Non-Standard Wipers



The standard material for universal wipers (U, D or ST) is 90 durometer urethane.

Temperature: -65° to 200°F

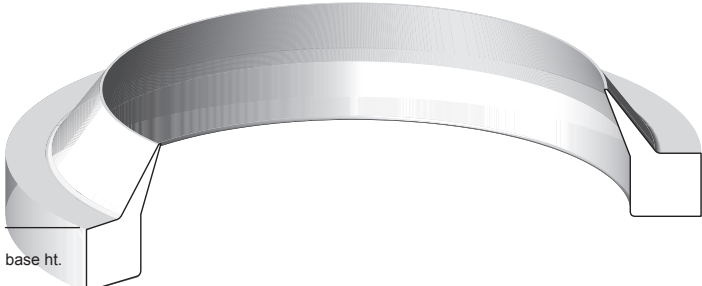
Part #	ID (A)	OD (D)	HT (B)	1-49	50-99	100-249	250-499	500+
Urethane								
U-0984	0.984	1.359	0.187	\$2.23	\$2.10	\$1.98	\$1.87	\$1.76
U-1102	1.102	1.477	0.187	\$2.29	\$2.15	\$2.04	\$1.92	\$1.81
U-2000-187S	2.000	2.500	0.187	\$2.63	\$2.47	\$2.34	\$2.21	\$2.08
U-9000-500	9.000	10.000	0.500	\$31.79	\$29.88	\$28.29	\$26.70	\$25.11
A40-135x150x7x12P90	135 mm	150 mm	7 mm	\$12.13	\$11.40	\$10.80	\$10.19	\$9.58
Rubber								
33-15002000-125	1.500	2.000	0.125	\$3.98	\$3.74	\$3.54	\$3.34	\$3.14
A39-75x85x2x6	75 mm	85 mm	2 mm	\$5.67	\$5.33	\$5.04	\$4.76	\$4.48

*Custom Machined Parts
Available Upon Request*

Telescoping Cylinder Wipers



Hyco® & Custom Hoist®



Parker®/Commercial®

These snap-in urethane wipers are specifically for Hyco®, Custom Hoist® and Commercial® telescoping cylinders. The Commercial® wipers have a single lip while the Hyco®/Custom Hoist® wipers have a dual lip with which they remove contaminants and debris before it enters the cylinder.

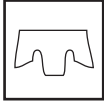
Temperature: -65° F to +200°F

Part #	Description	ID	OD	Base HT	1-99	100-249	250-499	500-999	1000 +
Hyco® & Custom Hoist®									
690211	3" Hyco® & Custom Hoist®	3.000	3.500	0.296	\$2.85	\$2.68	\$2.54	\$2.39	\$2.25
690212	4" Hyco® & Custom Hoist®	4.000	4.500	0.296	\$2.99	\$2.81	\$2.66	\$2.51	\$2.36
690213	5" Hyco® & Custom Hoist®	5.000	5.500	0.296	\$3.17	\$2.98	\$2.82	\$2.66	\$2.50
690214	6" Hyco® & Custom Hoist®	6.000	6.500	0.296	\$3.36	\$3.16	\$2.99	\$2.82	\$2.65
690215	7" Hyco® & Custom Hoist®	7.000	7.500	0.296	\$3.81	\$3.58	\$3.39	\$3.20	\$3.01
690216	8" Hyco® & Custom Hoist®	8.000	8.500	0.296	\$4.49	\$4.22	\$4.00	\$3.77	\$3.55
Parker®/Commercial®									
690510	2.75" Parker®/Commercial®	2.750	3.150	0.325	\$2.76	\$2.59	\$2.46	\$2.32	\$2.18
690511	3.75" Parker®/Commercial®	3.750	4.150	0.325	\$3.32	\$3.12	\$2.95	\$2.79	\$2.62
690512	4.75" Parker®/Commercial®	4.750	5.150	0.325	\$3.67	\$3.45	\$3.27	\$3.08	\$2.90
690513	5.75" Parker®/Commercial®	5.750	6.150	0.325	\$3.96	\$3.72	\$3.52	\$3.33	\$3.13
690514	6.75" Parker®/Commercial®	6.750	7.150	0.325	\$4.24	\$3.99	\$3.77	\$3.56	\$3.35
690515	7.905" Parker®/Commercial®	7.905	8.355	0.325	\$4.56	\$4.29	\$4.06	\$3.83	\$3.60

W Packing



.....W Packing Center Ring 44

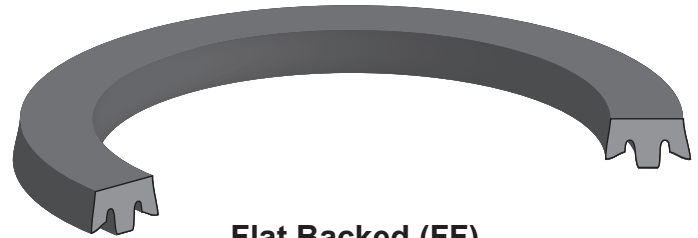


.....W Packing Flat Backed 44

W Packing



Center Ring (CB/CF)



Flat Backed (FF)

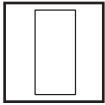


Stacked

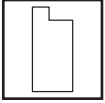
W Packing is a stacked ring configuration that does not require axial force to create proper lip interference. W Packing is available as a Center Ring (CB or CF) or Flat Backed (FF). Standard material is fabric/rubber but homogeneous buna may also be used for sealing at low pressure.

Part #	ID	OD	CS	1-99	100-249	250-499	500-999	1000+
WP375875CF	0.375	0.875	0.250	\$1.46	\$1.39	\$1.31	\$1.24	\$1.17
WP375875FF	0.375	0.875	0.250	\$1.46	\$1.39	\$1.31	\$1.24	\$1.17
WP5001000CF	0.500	1.000	0.250	\$1.48	\$1.41	\$1.33	\$1.26	\$1.18
WP5001000FF	0.500	1.000	0.250	\$1.48	\$1.41	\$1.33	\$1.26	\$1.18
WP15002125CF	1.500	2.125	0.312	\$1.95	\$1.85	\$1.76	\$1.66	\$1.56
WP20002500CF	2.000	2.500	0.250	\$1.97	\$1.87	\$1.77	\$1.67	\$1.58
WP20002500FF	2.000	2.500	0.250	\$1.97	\$1.87	\$1.77	\$1.67	\$1.58
BUNA WP								
WP375875CB	0.375	0.875	0.250	\$1.46	\$1.39	\$1.31	\$1.24	\$1.17
WP15002125CB	1.500	2.125	0.312	\$1.95	\$1.85	\$1.76	\$1.66	\$1.56
WP20002500CB	2.000	2.500	0.250	\$1.97	\$1.87	\$1.77	\$1.67	\$1.58

Bearings



.....Nylon Rod Bearings..... 46

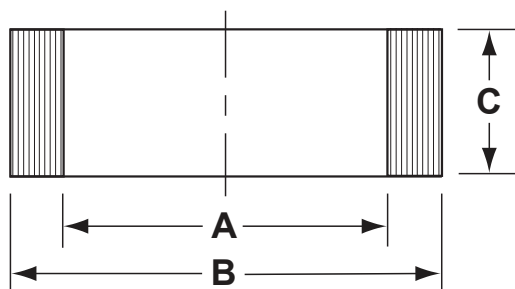
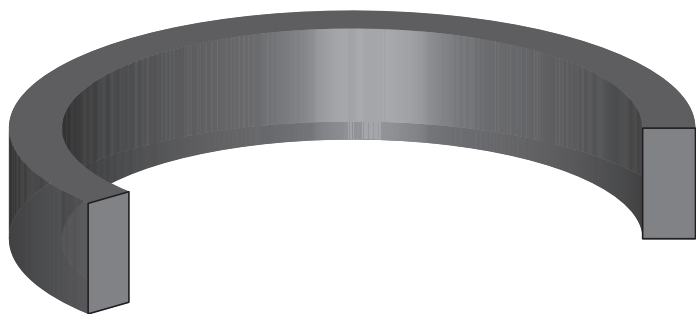


.....Stepped Nylon Rod Bearings 48

Note: Special Charges

- A. \$10.00 line minimum (net) if in stock
- B. \$50.00 line minimum (net) if **not** in stock

Nylon Rod Bearings



These bearings are manufactured from a special filled nylon material offering high compressive strength and dimensional stability. They are an ideal replacement for many bronze and phenolic applications and can be split for use in piston bearing applications.

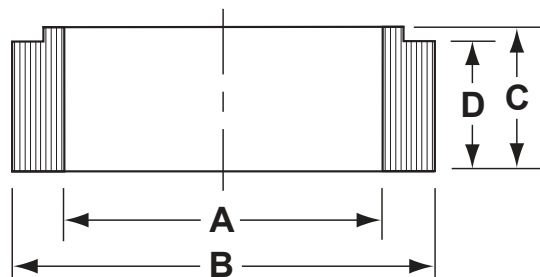
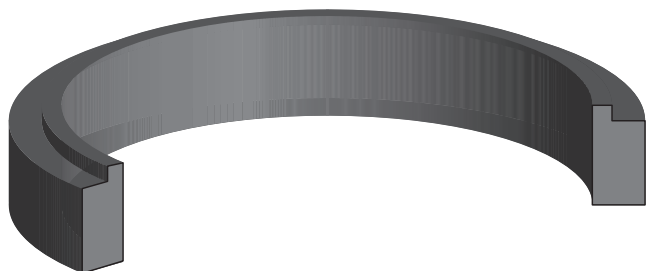
Temperature: -65° F to +225°F

A ID	B OD	C HT	Part Number	Reference	1-49	50-99	100-249	250-499	500+
0.875	1.250	0.187	NRB-875-1250-187		\$4.29	\$3.82	\$3.65	\$3.39	\$3.17
1.375	1.562	0.750	NRB-1375-1562-750		\$4.98	\$4.43	\$4.23	\$3.93	\$3.69
1.750	2.375	0.500	NRB-1750-2375-500		\$5.10	\$4.54	\$4.34	\$4.03	\$3.77
1.750	2.500	0.500	NRB-1750-2500-500		\$5.33	\$4.74	\$4.53	\$4.21	\$3.94
2.000	2.750	0.500	NRB-2000-2750-500	Grove®/Manitowoc®	\$5.76	\$5.13	\$4.90	\$4.55	\$4.26
2.625	3.375	0.500	NRB-2625-3375-500	Grove®/Manitowoc®	\$6.22	\$5.54	\$5.29	\$4.91	\$4.60
2.750	3.250	0.500	NRB-2750-3250-500		\$6.22	\$5.54	\$5.29	\$4.91	\$4.60
2.750	3.250	0.750	NRB-2750-3250-750	Drill Tech®	\$6.95	\$6.19	\$5.91	\$5.49	\$5.14
2.750	3.250	1.000	NRB-2750-3250-1000	Marion®	\$7.49	\$6.67	\$6.37	\$5.92	\$5.54
2.750	3.375	1.000	690530	Parker®/Commercial®	\$7.55	\$6.72	\$6.42	\$5.96	\$5.59
2.970	3.520	0.810	NRB-2970-3520-810	Galion®	\$7.30	\$6.50	\$6.21	\$5.77	\$5.40
3.000	3.500	0.500	NRB-3000-3500-500		\$5.98	\$5.32	\$5.08	\$4.72	\$4.43
3.000	3.500	0.750	690101A	Hyco® & Custom Hoist®	\$6.14	\$5.46	\$5.22	\$4.85	\$4.54
3.000	3.500	1.000	NRB-3000-3500-1000		\$7.65	\$6.81	\$6.50	\$6.04	\$5.66
3.000	3.525	0.750	690121A	Hyco® Oversize Top	\$6.45	\$5.74	\$5.48	\$5.10	\$4.77
3.125	3.500	0.875	NRB-3125-3500-875		\$7.68	\$6.84	\$6.53	\$6.07	\$5.68
3.187	3.687	0.750	690131A	Custom Hoist®	\$6.31	\$5.62	\$5.36	\$4.98	\$4.67
3.500	4.250	0.625	NRB-3500-4250-625		\$8.29	\$7.38	\$7.05	\$6.55	\$6.13
3.625	4.375	0.500	NRB-3625-4375-500	Grove®/Manitowoc®	\$8.64	\$7.69	\$7.34	\$6.83	\$6.39
3.750	4.250	1.000	NRB-3750-4250-1000	Marion®	\$8.93	\$7.95	\$7.59	\$7.05	\$6.61
3.750	4.375	1.000	690531	Parker®/Commercial®	\$9.12	\$8.12	\$7.75	\$7.20	\$6.75
3.970	4.520	0.810	NRB-3970-4520-810	Galion®	\$9.11	\$8.11	\$7.74	\$7.20	\$6.74
4.000	4.375	0.203	NRB-4000-4375-203	Custom Hoist®	\$5.37	\$4.78	\$4.56	\$4.24	\$3.97
4.000	4.500	0.750	690102A	Hyco® & Custom Hoist®	\$6.69	\$5.95	\$5.69	\$5.29	\$4.95
4.000	4.500	1.000	NRB-4000-4500-1000		\$8.91	\$7.93	\$7.57	\$7.04	\$6.59
4.000	4.525	0.750	690122A	Hyco® Oversize Top	\$7.03	\$6.26	\$5.98	\$5.55	\$5.20
4.125	4.625	0.750	690132A	Custom Hoist®	\$6.86	\$6.11	\$5.83	\$5.42	\$5.08
4.750	5.125	0.203	NRB-4750-5125-203	Custom Hoist®	\$5.80	\$5.16	\$4.93	\$4.58	\$4.29
4.750	5.250	1.000	NRB-4750-5250-1000	Marion®	\$9.63	\$8.57	\$8.19	\$7.61	\$7.13
4.750	5.375	1.000	690532	Parker®/Commercial®	\$10.70	\$9.52	\$9.10	\$8.45	\$7.92
4.970	5.520	0.760	NRB-4970-5520-760	Galion®	\$10.14	\$9.02	\$8.62	\$8.01	\$7.50
5.000	5.500	0.750	690103A	Hyco® & Custom Hoist®	\$7.71	\$6.86	\$6.55	\$6.09	\$5.71
5.000	5.500	1.000	NRB-5000-5500-1000		\$9.48	\$8.44	\$8.06	\$7.49	\$7.02
5.000	5.525	0.750	690123A	Hyco® Oversize Top	\$8.10	\$7.21	\$6.89	\$6.40	\$5.99

Nylon Rod Bearings

A ID	B OD	C HT	Part Number	Reference	1-49	50-99	100-249	250-499	500+
5.000	5.525	0.875	NRB-5000-5525-875		\$9.56	\$8.51	\$8.13	\$7.55	\$7.07
5.062	5.562	0.750	690133A	Custom Hoist®	\$7.97	\$7.09	\$6.77	\$6.30	\$5.90
5.500	5.875	0.203	NRB-5500-5875-203	Custom Hoist®	\$6.21	\$5.53	\$5.28	\$4.91	\$4.60
5.500	6.000	0.750	NRB-5500-6000-750		\$10.58	\$9.42	\$8.99	\$8.36	\$7.83
5.750	6.375	1.000	690533	Parker®/Commercial®	\$11.92	\$10.61	\$10.13	\$9.42	\$8.82
5.970	6.520	0.800	NRB-5970-6520-800	Galion®	\$11.59	\$10.32	\$9.85	\$9.16	\$8.58
6.000	6.500	0.750	690104A	Hyco® & Custom Hoist®	\$8.65	\$7.70	\$7.35	\$6.83	\$6.40
6.000	6.500	1.000	NRB-6000-6500-1000		\$11.33	\$10.08	\$9.63	\$8.95	\$8.38
6.000	6.525	0.750	690124A	Hyco® Oversize Top	\$9.09	\$8.09	\$7.73	\$7.18	\$6.73
6.000	6.525	0.875	NRB-6000-6525-875		\$10.81	\$9.62	\$9.19	\$8.54	\$8.00
6.375	6.875	0.203	NRB-6375-6875-203	Custom Hoist®	\$6.77	\$6.03	\$5.75	\$5.35	\$5.01
6.750	7.375	1.000	690534	Parker®/Commercial®	\$12.96	\$11.53	\$11.02	\$10.24	\$9.59
6.970	7.502	0.835	NRB-6970-7520-835	Galion®	\$12.99	\$11.56	\$11.04	\$10.26	\$9.61
6.970	7.502	1.000	NRB-6970-7520-1000	Galion®	\$13.71	\$12.20	\$11.65	\$10.83	\$10.15
7.000	7.500	0.750	690105A	Hyco® & Custom Hoist®	\$9.60	\$8.54	\$8.16	\$7.58	\$7.10
7.000	7.500	1.000	NRB-7000-7500-1000		\$12.24	\$10.89	\$10.40	\$9.67	\$9.06
7.000	7.525	0.750	690125A	Hyco® Oversize Top	\$10.09	\$8.98	\$8.58	\$7.97	\$7.47
7.250	7.750	0.203	NRB-7250-7750-203	Custom Hoist®	\$7.19	\$6.40	\$6.11	\$5.68	\$5.32
7.875	8.875	0.937	NRB-7875-8875-937		\$25.34	\$22.55	\$21.54	\$20.02	\$18.75
7.905	8.543	1.000	690535	Parker®/Commercial®	\$14.83	\$13.20	\$12.61	\$11.72	\$10.97
7.977	8.502	0.760	NRB-7970-8520-760	Galion®	\$14.68	\$13.07	\$12.48	\$11.60	\$10.86
8.000	8.500	0.750	690106A	Hyco® & Custom Hoist®	\$10.59	\$9.43	\$9.00	\$8.37	\$7.84
8.000	8.500	1.000	NRB-8000-8500-1000		\$13.64	\$12.14	\$11.59	\$10.78	\$10.09
8.000	8.525	0.750	690126A	Hyco® Oversize Top	\$11.12	\$9.90	\$9.45	\$8.78	\$8.23
8.000	8.750	1.000	NRB-8000-8750-1000	Terex®	\$20.93	\$18.63	\$17.79	\$16.53	\$15.49
8.125	8.625	0.750	690109A	Hyco®	\$11.85	\$10.55	\$10.07	\$9.36	\$8.77
8.125	8.625	0.750	690156A	Hyco® & Custom Hoist®	\$11.85	\$10.55	\$10.07	\$9.36	\$8.77
8.125	8.655	0.750	690127A	Hyco® Oversize Top	\$9.12	\$8.12	\$7.75	\$7.20	\$6.75
8.250	9.000	0.750	690107A	Hyco® & Custom Hoist®	\$14.99	\$13.34	\$12.74	\$11.84	\$11.09
9.000	9.750	0.750	690108A	Hyco®	\$15.72	\$13.99	\$13.36	\$12.42	\$11.63
9.125	9.750	0.750	690110A	Hyco® & Custom Hoist®	\$15.97	\$14.21	\$13.57	\$12.62	\$11.82
9.375	9.875	0.750	690157A	Hyco® & Custom Hoist®	\$19.48	\$17.34	\$16.56	\$15.39	\$14.42
9.375	9.910	0.750	690130A	Hyco® Oversize Top	\$19.95	\$17.76	\$16.96	\$15.76	\$14.76
9.375	10.000	1.000	690536	Parker®/Commercial®	\$23.54	\$20.95	\$20.01	\$18.60	\$17.42

Stepped Nylon Rod Bearings

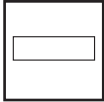


These bearings are manufactured from a special filled nylon material offering high compressive strength and dimensional stability. They are an ideal replacement for many bronze and phenolic applications and can be split for use in piston bearing applications.

Temperature: -65° F to +200°F

A ID	B OD	C HT	D HT	Part Number	Reference	1-49	50-99	100-249	250-499	500+
2.750	3.250	0.750	0.630	NRB-2750-3250-B750	Drill Tech®	\$7.65	\$6.81	\$6.50	\$6.04	\$5.66
3.000	3.500	0.570	0.450	690151B	Hyco®	\$6.75	\$6.01	\$5.74	\$5.33	\$5.00
3.000	3.500	0.750	0.630	690101B	Hyco®	\$6.75	\$6.01	\$5.74	\$5.33	\$5.00
3.000	3.500	0.750	0.500	690101BC	Custom Hoist®	\$6.75	\$6.01	\$5.74	\$5.33	\$5.00
3.000	3.425	0.680	0.560	690121B	Hyco® Undersize bottom	\$6.75	\$6.01	\$5.74	\$5.33	\$5.00
4.000	4.500	0.570	0.450	690152B	Hyco®	\$7.36	\$6.55	\$6.26	\$5.81	\$5.45
4.000	4.500	0.750	0.630	690102B	Hyco®	\$7.36	\$6.55	\$6.26	\$5.81	\$5.45
4.000	4.500	0.750	0.500	690102BC	Custom Hoist®	\$7.36	\$6.55	\$6.26	\$5.81	\$5.45
4.000	4.480	0.680	0.560	690122B	Hyco® Undersize bottom	\$7.36	\$6.55	\$6.26	\$5.81	\$5.45
5.000	5.500	0.570	0.450	690153B	Hyco®	\$8.48	\$7.55	\$7.21	\$6.70	\$6.28
5.000	5.500	0.750	0.630	690103B	Hyco®	\$8.48	\$7.55	\$7.21	\$6.70	\$6.28
5.000	5.500	0.750	0.500	690103BC	Custom Hoist®	\$8.48	\$7.55	\$7.21	\$6.70	\$6.28
5.000	5.470	0.680	0.560	690123B	Hyco® Undersize bottom	\$8.48	\$7.55	\$7.21	\$6.70	\$6.28
6.000	6.500	0.570	0.450	690154B	Hyco®	\$9.52	\$8.47	\$8.09	\$7.52	\$7.04
6.000	6.500	0.750	0.630	690104B	Hyco®	\$9.52	\$8.47	\$8.09	\$7.52	\$7.04
6.000	6.500	0.750	0.500	690104BC	Custom Hoist®	\$9.52	\$8.47	\$8.09	\$7.52	\$7.04
6.000	6.460	0.680	0.560	690124B	Hyco® Undersize bottom	\$9.52	\$8.47	\$8.09	\$7.52	\$7.04
7.000	7.500	0.570	0.450	690155B	Hyco®	\$10.56	\$9.40	\$8.98	\$8.34	\$7.81
7.000	7.500	0.750	0.630	690105B	Hyco®	\$10.56	\$9.40	\$8.98	\$8.34	\$7.81
7.000	7.500	0.750	0.500	690105BC	Custom Hoist®	\$10.56	\$9.40	\$8.98	\$8.34	\$7.81
7.000	7.500	0.680	0.560	690125B	Hyco® Undersize bottom	\$10.56	\$9.40	\$8.98	\$8.34	\$7.81
8.000	8.500	0.750	0.630	690106B	Hyco®	\$11.65	\$10.37	\$9.90	\$9.20	\$8.62
8.000	8.500	0.750	0.500	690106BC	Custom Hoist®	\$11.65	\$10.37	\$9.90	\$9.20	\$8.62
8.000	8.470	0.680	0.560	690126B	Hyco® Undersize bottom	\$11.65	\$10.37	\$9.90	\$9.20	\$8.62
8.125	8.625	0.570	0.450	690156B	Hyco®	\$13.04	\$11.61	\$11.08	\$10.30	\$9.65
8.125	8.625	0.750	0.630	690109B	Hyco®	\$13.04	\$11.61	\$11.08	\$10.30	\$9.65
8.125	8.600	0.680	0.560	690127B	Hyco® Undersize bottom	\$13.04	\$11.61	\$11.08	\$10.30	\$9.65
8.250	9.000	0.750	0.630	690107B	Hyco®	\$16.49	\$14.68	\$14.02	\$13.03	\$12.20
8.250	9.000	0.750	0.500	690107BC	Custom Hoist®	\$16.49	\$14.68	\$14.02	\$13.03	\$12.20
9.000	9.750	0.750	0.630	690108B	Hyco®	\$17.29	\$15.39	\$14.70	\$13.66	\$12.79
9.125	9.610	0.680	0.560	690129B	Hyco® Undersize bottom	\$17.57	\$15.64	\$14.93	\$13.88	\$13.00
9.125	9.750	0.750	0.630	690110B	Hyco®	\$17.57	\$15.64	\$14.93	\$13.88	\$13.00
9.125	9.750	0.750	0.500	690110BC	Custom Hoist®	\$17.57	\$15.64	\$14.93	\$13.88	\$13.00
9.375	9.875	0.570	0.450	690157B	Hyco®	\$21.43	\$19.07	\$18.22	\$16.93	\$15.86
9.375	9.910	0.680	0.560	690130B	Hyco® Undersize bottom	\$21.95	\$19.54	\$18.66	\$17.34	\$16.24

Seal Retainers



.....MAILHOT® Seal Retainers 50

MAILHOT® Seal Retainers



These nylon seal retainers are primarily used to retain the u-cup used in garbage trucks that use Mailhot® telescopic cylinders.

Part #	ID	OD	HT	CS	1 - 24	25 - 49	50 - 99	100 - 249	250 +
MNR-187	1.875	2.625	0.182	0.375	\$2.39	\$2.17	\$2.06	\$2.02	\$1.98
MNR-250	2.500	3.350	0.182	0.425	\$2.61	\$2.37	\$2.25	\$2.20	\$2.16
MNR-275	2.750	3.600	0.182	0.425	\$2.83	\$2.57	\$2.44	\$2.39	\$2.34
MNR-325	3.250	4.100	0.182	0.425	\$3.09	\$2.80	\$2.66	\$2.61	\$2.56
MNR-375	3.750	4.600	0.182	0.425	\$3.35	\$3.04	\$2.89	\$2.83	\$2.77
MNR-425	4.250	5.100	0.182	0.425	\$3.65	\$3.32	\$3.15	\$3.08	\$3.02
MNR-475	4.750	5.600	0.182	0.425	\$4.00	\$3.63	\$3.45	\$3.38	\$3.31
MNR-525	5.250	6.100	0.182	0.425	\$4.39	\$3.99	\$3.79	\$3.71	\$3.64
MNR-575	5.750	6.600	0.182	0.425	\$4.96	\$4.50	\$4.28	\$4.18	\$4.10

*Manufacturing in
the USA
Since 1982*