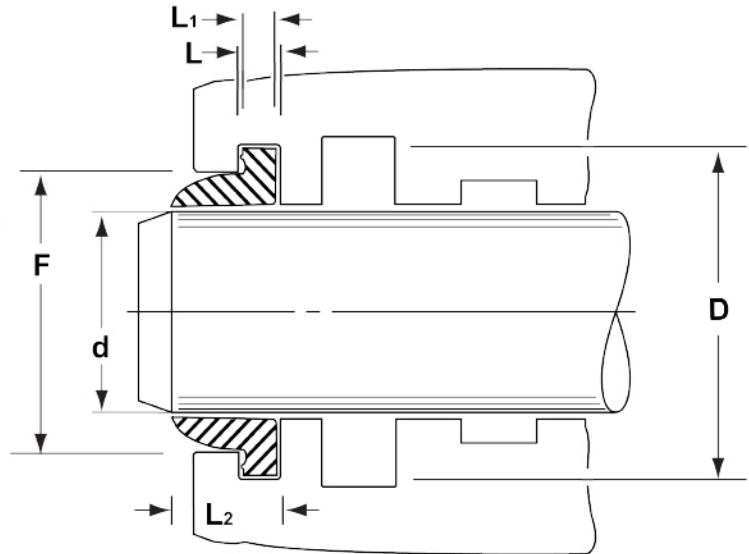


Style 33 Rectangular Base Nitrile Wipers - Inch



EXAMPLE: 33-10001375-125			
Prefix	Inside Diameter	Outside Diameter	Base Height
33-	1000	1375	-.125
	1"	1-3/8"	1/8"

This general purpose wiper has a lip designed to remove lightly adhered dirt, dust, and moisture from the rod. Manufactured from a hard nitrile rubber, suitable for installing in grooved housings, creates an effective seal on housings as well as rods.

Temperature: -22°F to 212°F

Part Number	Rod Size d	Groove Dia. D	Base Height L ₁	Total Seal Ht L ₂	Throat F	Groove Height L	Price
33-10001375-125	1.000	1.375	0.125	0.250	1.200	0.140	
33-11251625-125	1.125	1.625	0.125	0.375	1.425	0.140	
33-12501750-125	1.250	1.750	0.125	0.375	1.550	0.140	
33-13751875-125	1.375	1.875	0.125	0.375	1.675	0.140	
33-15002000-125	1.500	2.000	0.125	0.375	1.800	0.140	
33-16252125-125	1.625	2.125	0.125	0.375	1.925	0.140	
33-17502250-125	1.750	2.250	0.125	0.375	2.050	0.140	
33-20002500-125	2.000	2.500	0.125	0.375	2.300	0.140	
33-22502750-125	2.250	2.750	0.125	0.375	2.550	0.140	
33-25003000-125	2.500	3.000	0.125	0.375	2.800	0.140	
33-27503250-125	2.750	3.250	0.125	0.375	3.050	0.140	
33-28753375-125	2.875	3.375	0.125	0.375	3.175	0.140	
33-30003500-125	3.000	3.500	0.125	0.375	3.300	0.140	
33-32504000-187	3.250	4.000	0.187	0.500	3.650	0.202	
33-35004250-187	3.500	4.250	0.187	0.500	3.900	0.202	
33-40004750-187	4.000	4.750	0.187	0.500	4.400	0.202	
33-45005250-187	4.500	5.250	0.187	0.500	4.900	0.202	
33-50005750-187	5.000	5.750	0.187	0.500	5.400	0.202	
33-60006750-187	6.000	6.750	0.187	0.500	6.400	0.202	