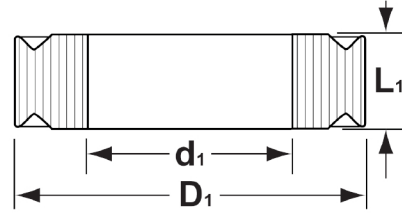
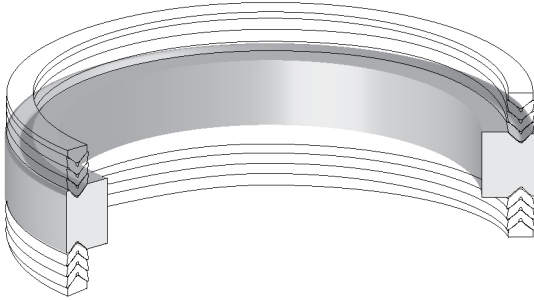


# FCB Nylon Female Center Bearings - Inch & Metric



FCB bearings are made from glass filled nylon giving them excellent compressive strength. They are used in double acting piston applications between sets of vee packing.

EXAMPLE: FCB-4000-625			
Prefix	Outside Diameter		Height
FCB-	4000	-	625
	4"		5/8"

EXAMPLE: FCB-90MM-17			
Prefix	Outside Diameter		Height
FCB-	90	MM-	17
	90mm		17mm

Part Number	Bearing Size			Packing Size	
	I.D. $d_1$	O.D. $D_1$	Height $L_1$	I.D.	O.D.
FCB-2500-625	1.500	2.500	0.625	2.000	2.500
FCB-3000-625	2.000	3.000	0.625	2.500	3.000
FCB-4000-625	3.000	4.000	0.625	3.500	4.000
FCB-4500-625-1	3.500	4.500	0.625	4.000	4.500
FCB-7000-1000	5.750	7.000	1.000	6.250	7.000
FCB-8000-625	6.750	8.000	0.625	7.250	8.000

Part Number	Bearing Size			Packing Size	
	I.D. $d_1$	O.D. $D_1$	Height $L_1$	I.D.	O.D.
FCB-80MM-17	55	80	17	65	80
FCB-90MM-17	65	90	17	75	90
FCB-100MM-17	75	100	17	85	100
FCB-110MM-17	85	110	17	95	110
FCB-115MM-17	90	115	17	100	115
FCB-125MM-17	100	125	17	110	125
FCB-150MM-17	125	150	17	135	150