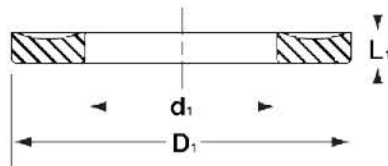


90 Duro. Nitrile Contoured Backup Rings - Inch



ALTERNATIVE SEALS:
19-, 51-, MS28774, MS27585,
MS28782, MS28783



Molded from a high modulus 90 durometer nitrile material, these contoured backup rings can be easily stretched for installation. The contoured design allows the ring to mate with the o-ring. Dash sizes are equivalent to AS568A o-ring sizes. For metric sizes see MBH type backups in this section.

EXAMPLE: 8-352 N90

Prefix	AS568 DASH #	Material
8-	352	N90
		90A NBR

Part No.
8-004 N90
8-005 N90
8-006 N90
8-007 N90
8-008 N90
8-009 N90
8-010 N90
8-011 N90
8-012 N90
8-013 N90
8-014 N90
8-015 N90
8-016 N90
8-017 N90
8-018 N90
8-019 N90
8-020 N90
8-021 N90
8-022 N90
8-023 N90
8-024 N90
8-025 N90
8-026 N90
8-027 N90
8-028 N90
8-029 N90
8-030 N90
8-031 N90
8-032 N90
8-033 N90
8-034 N90
8-035 N90
8-036 N90
8-037 N90
8-038 N90
8-039 N90
8-040 N90
8-041 N90
8-042 N90

Part No.
8-043 N90
8-044 N90
8-045 N90
8-046 N90
8-047 N90
8-048 N90
8-049 N90
8-050 N90
8-102 N90
8-103 N90
8-104 N90
8-105 N90
8-106 N90
8-107 N90
8-108 N90
8-109 N90
8-110 N90
8-111 N90
8-112 N90
8-113 N90
8-114 N90
8-115 N90
8-116 N90
8-117 N90
8-118 N90
8-119 N90
8-120 N90
8-121 N90
8-122 N90
8-123 N90
8-124 N90
8-125 N90
8-126 N90
8-127 N90
8-128 N90
8-129 N90
8-130 N90
8-131 N90
8-132 N90

Part No.
8-133 N90
8-134 N90
8-135 N90
8-136 N90
8-137 N90
8-138 N90
8-139 N90
8-140 N90
8-141 N90
8-142 N90
8-143 N90
8-144 N90
8-145 N90
8-146 N90
8-147 N90
8-148 N90
8-149 N90
8-150 N90
8-151 N90
8-152 N90
8-153 N90
8-154 N90
8-155 N90
8-156 N90
8-157 N90
8-158 N90
8-159 N90
8-160 N90
8-161 N90
8-162 N90
8-163 N90
8-164 N90
8-165 N90
8-166 N90
8-167 N90
8-168 N90
8-169 N90
8-170 N90
8-171 N90

Part No.
8-172 N90
8-173 N90
8-174 N90
8-175 N90
8-176 N90
8-177 N90
8-178 N90
8-201 N90
8-202 N90
8-203 N90
8-204 N90
8-205 N90
8-206 N90
8-207 N90
8-208 N90
8-209 N90
8-210 N90
8-211 N90
8-212 N90
8-213 N90
8-214 N90
8-215 N90
8-216 N90
8-217 N90
8-218 N90
8-219 N90
8-220 N90
8-221 N90
8-222 N90
8-223 N90
8-224 N90
8-225 N90
8-226 N90
8-227 N90
8-228 N90
8-229 N90
8-230 N90
8-231 N90
8-232 N90

90 Durometer Nitrile Contoured Backup Rings - Inch, cont'd.

Part No.
8-233 N90
8-234 N90
8-235 N90
8-236 N90
8-237 N90
8-238 N90
8-239 N90
8-240 N90
8-241 N90
8-242 N90
8-243 N90
8-244 N90
8-245 N90
8-246 N90
8-247 N90
8-248 N90
8-249 N90
8-250 N90
8-251 N90
8-252 N90
8-253 N90
8-254 N90
8-255 N90
8-256 N90
8-257 N90
8-258 N90
8-259 N90
8-260 N90
8-261 N90
8-262 N90
8-263 N90
8-264 N90
8-265 N90
8-266 N90
8-267 N90
8-268 N90
8-269 N90
8-270 N90
8-271 N90
8-272 N90
8-273 N90
8-274 N90
8-275 N90
8-276 N90
8-277 N90
8-278 N90
8-279 N90
8-280 N90

Part No.
8-281 N90
8-282 N90
8-283 N90
8-284 N90
8-309 N90
8-310 N90
8-311 N90
8-312 N90
8-313 N90
8-314 N90
8-315 N90
8-316 N90
8-317 N90
8-318 N90
8-319 N90
8-320 N90
8-321 N90
8-322 N90
8-323 N90
8-324 N90
8-325 N90
8-326 N90
8-327 N90
8-328 N90
8-329 N90
8-330 N90
8-331 N90
8-332 N90
8-333 N90
8-334 N90
8-335 N90
8-336 N90
8-337 N90
8-338 N90
8-339 N90
8-340 N90
8-341 N90
8-342 N90
8-343 N90
8-344 N90
8-345 N90
8-346 N90
8-347 N90
8-348 N90
8-349 N90
8-350 N90
8-351 N90
8-352 N90

Part No.
8-353 N90
8-354 N90
8-355 N90
8-356 N90
8-357 N90
8-358 N90
8-359 N90
8-360 N90
8-361 N90
8-362 N90
8-363 N90
8-364 N90
8-365 N90
8-366 N90
8-367 N90
8-368 N90
8-369 N90
8-370 N90
8-371 N90
8-372 N90
8-373 N90
8-374 N90
8-375 N90
8-376 N90
8-377 N90
8-378 N90
8-379 N90
8-380 N90
8-381 N90
8-382 N90
8-383 N90
8-384 N90
8-385 N90
8-386 N90
8-387 N90
8-388 N90
8-389 N90
8-390 N90
8-391 N90
8-392 N90
8-393 N90
8-394 N90
8-395 N90
8-425 N90
8-426 N90
8-427 N90
8-428 N90
8-429 N90

Part No.
8-430 N90
8-431 N90
8-432 N90
8-433 N90
8-434 N90
8-435 N90
8-436 N90
8-437 N90
8-438 N90
8-439 N90
8-440 N90
8-441 N90
8-442 N90
8-443 N90
8-444 N90
8-445 N90
8-446 N90
8-447 N90
8-448 N90
8-449 N90
8-450 N90
8-451 N90
8-452 N90
8-453 N90
8-454 N90
8-455 N90
8-456 N90
8-457 N90
8-458 N90
8-459 N90
8-460 N90
8-461 N90
8-462 N90
8-463 N90
8-464 N90
8-465 N90
8-466 N90
8-467 N90
8-468 N90
8-469 N90
8-470 N90
8-471 N90
8-472 N90
8-473 N90
8-474 N90
8-475 N90