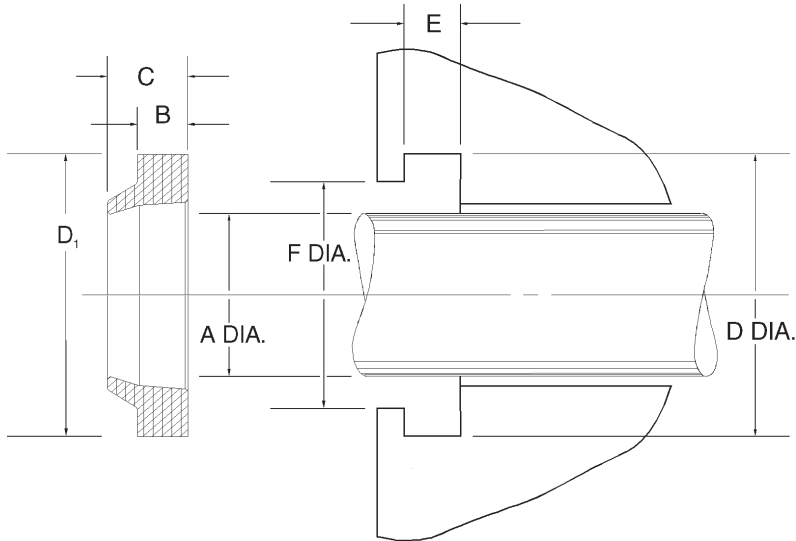


U Type Universal Urethane Wipers



The standard materials for universal wipers (U, D or ST) are high durometer urethane or hytrel. They are also available in molythane, polymyte, fluoromyte, nitroxile, and viton. Consult sales for price and availability.

Temperature: -65 to 200F

U Wipers

Part No.	Wiper Dimensions				Groove Dimensions			Price
	Rod Dia. A	Outside Dia. D ₁	B Base Height	C Max. Length	D +.006 - .000	E +.004 - .000	F +.010 - .000	
U-0250	0.250	1/2	1/8	.210	0.497	.124	0.410	\$ 1.66
U-0312	0.312	9/16	1/8	.210	0.560	.124	0.475	\$ 1.81
U-0375	0.375	5/8	1/8	.210	0.622	.124	0.535	\$ 1.81
U-0437	0.437	11/16	1/8	.210	0.685	.124	0.600	\$ 1.81
U-0500	0.500	3/4	1/8	.210	0.747	.124	0.660	\$ 1.83
U-0562	0.562	13/16	1/8	.210	0.810	.124	0.725	\$ 1.83
U-0625	0.625	7/8	1/8	.210	0.872	.124	0.785	\$ 1.83
U-0687	0.687	15/16	1/8	.210	0.935	.124	0.850	\$ 1.83
U-0750	0.750	1-1/8	3/16	.305	1.122	.187	0.995	\$ 1.84
U-0812	0.812	1-3/16	3/16	.305	1.185	.187	1.060	\$ 1.85
U-0875	0.875	1-1/4	3/16	.305	1.247	.187	1.120	\$ 1.86
U-0937	0.937	1-5/16	3/16	.305	1.310	.187	1.185	\$ 1.87
U-0984	0.984	1.359	3/16	.305	1.357	.187	1.185	\$ 4.56
U-1000	1.000	1-3/8	3/16	.305	1.372	.187	1.245	\$ 1.88
U-1062	1.062	1-7/16	3/16	.305	1.435	.187	1.310	\$ 2.48
U-1102	1.102	1.477	3/16	.305	1.474	.187	1.370	\$ 4.58
U-1125	1.125	1-1/2	3/16	.305	1.497	.187	1.370	\$ 1.89
U-1187	1.187	1-9/16	3/16	.305	1.560	.187	1.435	\$ 1.93
U-1250	1.250	1-5/8	3/16	.305	1.622	.187	1.495	\$ 2.05
U-1312	1.312	1-11/16	3/16	.305	1.685	.187	1.560	\$ 2.13
U-1375	1.375	1-3/4	3/16	.305	1.747	.187	1.620	\$ 2.18
U-1437	1.437	1-13/16	3/16	.305	1.810	.187	1.685	\$ 2.92
U-1500	1.500	1-7/8	3/16	.305	1.872	.187	1.745	\$ 2.40
U-1625	1.625	2	3/16	.305	1.997	.187	1.870	\$ 2.50
U-1750	1.750	2-1/8	3/16	.305	2.122	.187	1.995	\$ 2.75
U-1812	1.812	2-3/16	3/16	.305	2.185	.187	2.060	\$ 4.45
U-1875	1.875	2-1/4	3/16	.305	2.247	.187	2.120	\$ 2.78
U-2000-187S	2.000	2-1/2	3/16	.305	2.497	.187	2.327	\$ 6.66
U-2000	2.000	2-1/2	1/4	.395	2.497	.249	2.327	\$ 2.82
U-2125	2.125	2-5/8	1/4	.395	2.622	.249	2.452	\$ 2.91
U-2250	2.250	2-3/4	1/4	.395	2.747	.249	2.577	\$ 2.98
U-2312	2.312	2-13/16	1/4	.395	2.810	.249	2.640	\$ 6.82
U-2375	2.375	2-7/8	1/4	.395	2.872	.249	2.702	\$ 3.14
U-2500	2.500	3	1/4	.395	2.997	.249	2.827	\$ 3.31
U-2562	2.562	3-1/16	1/4	.395	3.060	.249	2.890	\$ 7.34
U-2625	2.625	3-1/8	1/4	.395	3.122	.249	2.952	\$ 3.33
U-2750	2.750	3-1/4	1/4	.395	3.247	.249	3.077	\$ 3.44
U-2875	2.875	3-3/8	1/4	.395	3.372	.249	3.202	\$ 4.93
U-3000	3.000	3-1/2	1/4	.395	3.497	.249	3.327	\$ 3.57
U-3125	3.125	3-5/8	1/4	.395	3.622	.249	3.452	\$ 3.97
U-3250	3.250	3-3/4	1/4	.395	3.747	.249	3.577	\$ 3.99
U-3375	3.375	3-7/8	1/4	.395	3.872	.249	3.702	\$ 5.15
U-3500	3.500	4	1/4	.395	3.997	.249	3.827	\$ 4.08
U-3625	3.625	4-1/8	1/4	.395	4.122	.249	3.952	\$ 5.41

Part No.	Wiper Dimensions				Groove Dimensions			Price
	Rod Dia. A	Outside Dia. D ₁	B Base Height	C Max. Length	D +.006 - .000	E +.004 - .000	F +.010 - .000	
U-3750	3.750	4-1/4	1/4	.395	4.247	.249	4.077	\$ 5.45
U-3875	3.875	4-3/8	1/4	.395	4.372	.249	4.202	\$ 6.10
U-4000	4.000	4-1/2	1/4	.395	4.497	.249	4.327	\$ 6.46
U-4125	4.125	4-5/8	1/4	.395	4.622	.249	4.452	\$ 9.03
U-4250	4.250	4-3/4	1/4	.395	4.747	.249	4.577	\$ 6.68
U-4375	4.375	4-7/8	1/4	.395	4.872	.249	4.702	\$ 12.16
U-4500-250	4.500	5	1/4	.395	4.947	.249	4.827	\$ 10.94
U-4500	4.500	5-1/4	3/8	.585	5.247	.374	4.993	\$ 10.94
U-4625	4.625	5-3/8	3/8	.585	5.372	.374	5.118	\$ 13.75
U-4750	4.750	5-1/2	3/8	.585	5.497	.374	5.243	\$ 12.67
U-4875	4.875	5-5/8	3/8	.585	5.622	.374	5.368	\$ 17.32
U-5000-250	5.000	5-1/2	1/4	.395	5.497	.249	5.327	\$ 13.25
U-5000	5.000	5-3/4	3/8	.585	5.747	.374	5.493	\$ 13.25
U-5125	5.125	5-7/8	3/8	.585	5.872	.374	5.618	\$ 19.19
U-5250	5.250	6	3/8	.585	5.997	.374	5.743	\$ 15.61
U-5375	5.375	6-1/8	3/8	.585	6.122	.374	5.868	\$ 21.07
U-5500	5.500	6-1/4	3/8	.585	6.247	.374	5.993	\$ 16.03
U-5625	5.625	6-3/8	3/8	.585	6.372	.374	6.118	\$ 22.61
U-5750	5.750	6-1/2	3/8	.585	6.497	.374	6.243	\$ 17.37
U-5875	5.875	6-5/8	3/8	.585	6.622	.374	6.368	\$ 23.69
U-6000	6.000	6-3/4	3/8	.585	6.747	.374	6.493	\$ 17.56
U-6250	6.250	7	3/8	.585	6.997	.374	6.743	\$ 19.32
U-6500	6.500	7-1/4	3/8	.585	7.247	.374	6.993	\$ 19.52
U-6500-500	6.500	7-1/2	1/2	3/4	7.500	.499	7.159	\$ 46.55
U-6625	6.625	7-3/8	3/8	.585	7.372	.374	7.118	\$ 26.61
U-6750	6.750	7-1/2	3/8	.585	7.497	.374	7.243	\$ 21.01
U-7000	7.000	7-3/4	3/8	.585	7.747	.374	7.493	\$ 20.47
U-7000-500	7.000	8	1/2	3/4	8.000	.499	7.659	\$ 47.35
U-7250	7.250	8	3/8	.585	7.997	.374	7.743	\$ 31.31
U-7500	7.500	8-1/4	3/8	.585	8.247	.374	7.993	\$ 25.04
U-7750	7.750	8-1/2	3/8	.585	8.497	.374	8.243	\$ 33.21
U-8000	8.000	8-3/4	3/8	.585	8.747	.374	8.493	\$ 25.04
U-8250	8.250	9	3/8	.585	8.997	.374	8.743	\$ 27.21
U-8500	8.500	9-1/4	3/8	.585	9.247	.374	8.993	\$ 36.09
U-8750	8.750	9-1/2	3/8	.585	9.497	.374	9.243	\$ 37.06
U-8875	8.875	9-5/8	3/8	.585	9.622	.374	9.368	\$ 37.52
U-9000	9.000	9-3/4	3/8	.585	9.747	.374	9.493	\$ 37.97
U-9000-500	9.000	10	1/2	3/4	10.000	.499	9.659	\$ 106.05
U-9250	9.250	10	3/8	.585	9.997	.374	9.743	\$ 38.88
U-9500	9.500	10-1/4	3/8	.585	10.247	.374	9.993	\$ 39.87
U-9500-500	9.500	10.500	1	1	10.500	.499	10.159	\$ 66.45
U-9750	9.750	10-1/2	3/8	.585	10.497	.374	10.243	\$ 40.77
U-10000	10.000	11	1/2	.775	10.997	.499	10.659	\$ 48.68
U-10250	10.250	11-1/4	1/2	.775	11.247	.499	10.909	\$ 49.84

U Type Universal Urethane Wipers, cont'd.

Part No.	Wiper Dimensions				Groove Dimensions			Price
	Rod Dia. A	Outside Dia. D ₁	B Base Height	C Max. Length	D +.006 -0.000	E +.004 -0.000	F +.010 -0.000	
U-10500	10.500	11-1/2	1/2	.775	11.497	.499	11.159	\$ 51.02
U-10625	10.625	11-5/8	1/2	.775	11.622	.499	11.284	\$ 51.60
U-10750	10.750	11-3/4	1/2	.775	11.747	.499	11.409	\$ 59.66
U-11000	11.000	12	1/2	.775	11.997	.499	11.659	\$ 61.07
U-11250	11.250	12-1/4	1/2	.775	12.247	.499	11.909	\$ 75.98
U-11500	11.500	12-1/2	1/2	.775	12.497	.499	12.159	\$ 78.53
U-11750	11.750	12-3/4	1/2	.775	12.747	.499	12.409	\$ 83.41
U-12000	12.000	13	1/2	.775	12.997	.499	12.659	\$ 74.93
U-12500	12.500	13-1/2	1/2	.775	13.497	.499	13.159	\$ 86.53
U-13000	13.000	14	1/2	.775	13.997	.499	13.659	\$ 92.51

Part No.	Wiper Dimensions				Groove Dimensions			Price
	Rod Dia. A	Outside Dia. D ₁	B Base Height	C Max. Length	D +.006 -0.000	E +.004 -0.000	F +.010 -0.000	
U-13500	13.500	14-1/2	1/2	.775	14.497	.499	14.159	\$ 100.96
U-13750	13.750	14-3/4	1/2	.775	14.747	.499	14.409	\$ 103.42
U-14750	14.750	15-3/4	1/2	.775	15.747	.499	15.409	\$ 111.07
U-15000	15.000	16	1/2	.775	15.997	.499	15.659	\$ 112.96
U-16500	16.500	17-1/2	1/2	.775	17.447	.499	17.159	\$ 121.14
U-17375	17.375	18-3/8	1/2	.775	18.322	.499	18.034	\$ 129.53
U-18000	18.000	19	1/2	.775	18.997	.499	18.659	\$ 123.38
U-18500	18.500	19-1/2	1/2	.775	19.447	.499	19.159	\$ 128.78
U-20000	20.000	21	1/2	.775	20.997	.499	20.659	\$ 145.05
U-30000	30.000	31	1/2	.775	30.997	.499	30.659	\$ 320.58

U Wipers