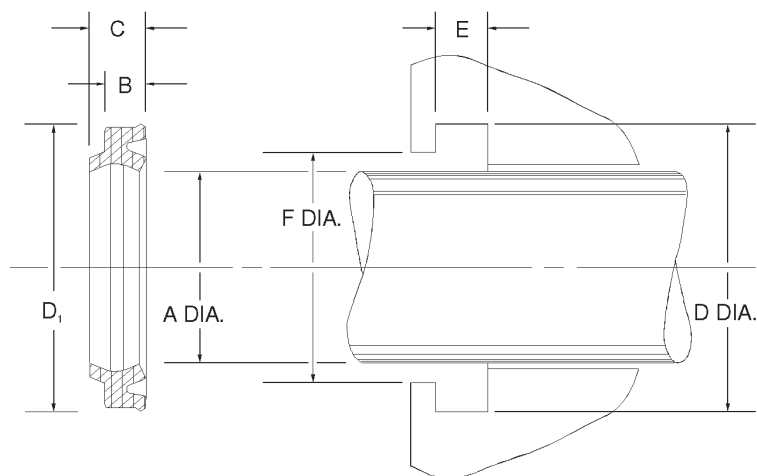


H Type Double Lip Urethane Wipers



H type double lip wipers are one piece snap-in type rod wipers made from 90 durometer urethane. Wiping and sealing functions can be performed from a single component in low pressure systems. As the external lip scrapes foreign matter from the rod, the other lip acts as an effective pressure seal in low pressure pneumatic applications and a secondary seal to trap slight leakage in hydraulic systems.

Temperature: -65 to 200F

H Wipers

Part No.	Wiper Dimensions (in.)				Groove Dimensions (in.)			Price
	Rod Dia. A	Outside Dia. D ₁	B Base Height	C Max. Length	D +.002 -0.000	E +.005 -0.000	F +.002 -0.000	
H-0250	0.250	9/16	.194	.245	0.552	.203	0.370	\$2.60
H-0312	0.312	5/8	.194	.245	0.615	.203	0.432	\$2.60
H-0375	0.375	11/16	.194	.245	0.677	.203	0.495	\$2.60
H-0500	0.500	13/16	.194	.245	0.802	.203	0.620	\$1.82
H-0625	0.625	15/16	.194	.245	0.927	.203	0.745	\$2.09
H-0750	0.750	1-1/16	.194	.245	1.052	.203	0.870	\$2.09
H-0875	0.875	1-1/4	.212	.275	1.240	.218	1.010	\$2.13
						+.003	+.003	
H-0937	0.937	1-5/16	.212	.275	1.302	.218	1.072	\$2.19
H-1000	1.000	1-3/8	.212	.275	1.365	.218	1.135	\$2.19
H-1125	1.125	1-1/2	.212	.275	1.490	.218	1.260	\$2.29
H-1250	1.250	1-5/8	.212	.275	1.615	.218	1.385	\$2.42
H-1375	1.375	1-3/4	.212	.275	1.740	.218	1.510	\$2.61
H-1500	1.500	1-7/8	.212	.275	1.865	.218	1.635	\$2.76
H-1625	1.625	2	.212	.275	1.990	.218	1.760	\$2.86
H-1750	1.750	2-1/8	.212	.275	2.115	.218	1.885	\$2.96
H-1875	1.875	2-1/4	.212	.275	2.240	.218	2.010	\$4.74
H-2000	2.000	2-3/8	.212	.275	2.365	.218	2.135	\$3.36
H-2125	2.125	2-1/2	.212	.275	2.490	.218	2.260	\$3.42
H-2187	2.187	2-11/16	.275	.351	2.683	.281	2.323	\$3.42
H-2250	2.250	2-3/4	.275	.351	2.745	.281	2.385	\$3.55
H-2375	2.375	2-7/8	.275	.351	2.870	.281	2.510	\$6.01
H-2500	2.500	3	.275	.351	2.995	.281	2.635	\$3.72

Part No.	Wiper Dimensions (in.)				Groove Dimensions (in.)			Price
	Rod Dia. A	Outside Dia. D ₁	B Base Height	C Max. Length	D +.003 -0.000	E +.005 -0.000	F +.003 -0.000	
H-2625	2.625	3-1/8	.275	.351	3.120	.281	2.760	\$3.91
H-2750	2.750	3-1/4	.275	.351	3.245	.281	2.885	\$4.11
H-3000	3.000	3-1/2	.275	.351	3.495	.281	3.135	\$4.65
H-3250	3.250	3-3/4	.275	.351	3.745	.281	3.385	\$5.23
H-3500	3.500	4	.275	.351	3.995	.281	3.635	\$5.37
H-3625	3.625	4-1/8	.275	.351	4.120	.281	3.760	\$7.12
H-3750	3.750	4-1/4	.275	.351	4.245	.281	3.885	\$5.95
H-3875	3.875	4-3/8	.275	.351	4.370	.281	4.010	\$7.71
H-4000	4.000	4-1/2	.275	.351	4.495	.281	4.135	\$6.07
H-4500	4.500	5	.275	.351	4.995	.281	4.635	\$6.70
H-4750	4.750	5-1/4	.275	.351	5.245	.281	4.885	\$8.81
H-5000	5.000	5-1/2	.275	.351	5.495	.281	5.135	\$7.97
H-5125	5.125	5-5/8	.275	.351	5.620	.281	5.260	\$9.31
H-5250	5.250	5-3/4	.275	.351	5.745	.281	5.385	\$10.73
H-5500	5.500	6	.275	.351	5.995	.281	5.635	\$11.02
H-6000	6.000	6-1/2	.275	.351	6.495	.281	6.135	\$12.00
H-6500	6.500	7	.275	.351	6.995	.281	6.635	\$13.02
H-7000	7.000	7-1/2	.275	.351	7.495	.281	7.135	\$14.32
H-8000	8.000	8-1/2	.275	.351	8.495	.281	8.135	\$18.97
H-8500	8.500	9	.275	.351	8.995	.281	8.635	\$19.89
H-10000	10.000	10-1/2	.275	.351	10.495	.281	10.135	\$25.44
H-17500	17.500	18	.275	.351	17.495	.281	17.635	\$91.83
H-26000	26.000	26-1/2	.275	.351	25.995	.281	26.135	\$125.17