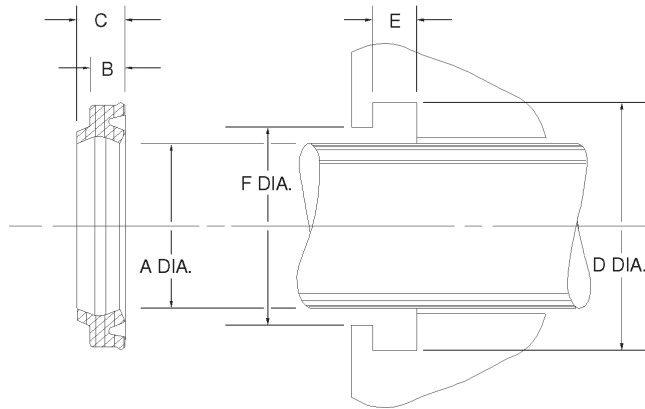


AY Type Double Lip Metric Urethane Wipers



AY type double lip are one piece snap-in type rod wipers made from 90 durometer urethane. Wiping and sealing functions can be performed from a single component in low pressure systems. As the external lip scrapes foreign matter from the rod, the other lip acts as an effective pressure seal in low pressure pneumatic applications and a secondary seal to trap slight leakage in hydraulic systems.

Temperature: -40 to 230F

AY Wipers

Part Number					Groove Dimensions		Price
Prefix	Rod Dia. A mm	O.D./Bore D mm +0.2/-0.0	Base Height B mm	Total Height C mm	E mm ±0.2	F mm ±0.1	
AY	- 16	X 24	X 4.5	X 6	5	20.3	\$ 4.57
AY	- 18	X 26	X 4.5	X 6	5	22.3	\$ 4.99
AY	- 20	X 28	X 4.5	X 6	5	24.3	\$ 5.82
AY	- 22	X 28	X 3.6	X 4.8	4	24.5	\$ 5.98
AY	- 22	X 30	X 4.5	X 6	5	24.5	\$ 6.02
AY	- 22	X 30	X 5	X 6.5	5.5	26.3	\$ 6.02
AY	- 22.4	X 30.4	X 4.5	X 6	5	26.4	\$ 6.02
AY	- 25	X 31	X 3.6	X 4.8	4	27.5	\$ 6.05
AY	- 25	X 33	X 4.5	X 6	5	29.3	\$ 6.08
AY	- 28	X 36	X 4.5	X 6	5	32.3	\$ 6.18
AY	- 30	X 38	X 4.5	X 5.8	5	34	\$ 6.21
AY	- 30	X 38	X 5	X 6.5	5.5	34.3	\$ 6.21
AY	- 31.5	X 39.5	X 5	X 6.5	5.5	35.8	\$ 6.60
AY	- 32	X 40	X 5	X 6.5	5.5	36.3	\$ 6.73
AY	- 35	X 43	X 5	X 6.5	5.5	39.3	\$ 7.09
AY	- 35.5	X 43.5	X 5	X 6.5	5.5	39.8	\$ 7.18
AY	- 36	X 44	X 4.5	X 5.8	5.5	40	\$ 7.99
AY	- 36	X 44	X 5	X 6.5	5.5	40.3	\$ 7.99
AY	- 40	X 48	X 5	X 6.5	5.5	44.3	\$ 8.06
AY	- 42	X 50	X 4.5	X 5.8	5.5	46	\$ 8.24
AY	- 45	X 53	X 5	X 6.5	5.5	49.3	\$ 8.38
AY	- 47	X 55	X 4.5	X 5.8	5.5	51	\$ 29.92
AY	- 50	X 58	X 4.5	X 5.8	5.5	54	\$ 8.67
AY	- 50	X 58	X 5	X 6.5	5.5	54.3	\$ 8.67
AY	- 53	X 61	X 5	X 6.5	5.5	57.3	\$ 8.79
AY	- 55	X 63	X 5	X 6.5	5.5	59.3	\$ 8.84
AY	- 56	X 64	X 5	X 6.5	5.5	60.3	\$ 8.89
AY	- 60	X 68	X 5	X 6.5	5.5	64.3	\$ 9.28
AY	- 60	X 70	X 5	X 6.5	5.5	65	\$ 9.59
AY	- 63	X 71	X 5	X 6.5	5.5	67.3	\$ 9.64
AY	- 65	X 73	X 5	X 6.5	5.5	69.3	\$ 9.67
AY	- 67	X 75	X 5	X 6.5	5.5	71.3	\$ 9.67
AY	- 70	X 80	X 6	X 8	7	75	\$ 10.01
AY	- 71	X 81	X 6	X 8	7	76	\$ 10.34

Part Number					Groove Dimensions		Price
Prefix	Rod Dia. A mm	O.D./Bore D mm +0.2/-0.0	Base Height B mm	Total Height C mm	E mm ±0.2	F mm ±0.1	
AY	- 75	X 85	X 6	X 8	7	80	\$ 10.45
AY	- 80	X 90	X 5	X 6.5	5.5	85	\$ 10.52
AY	- 80	X 90	X 6	X 8	7	85	\$ 10.52
AY	- 85	X 95	X 6	X 8	7	90	\$ 10.58
AY	- 90	X 100	X 6	X 8	7	95	\$ 11.30
AY	- 95	X 105	X 6	X 8	7	100	\$ 11.95
AY	- 100	X 110	X 6	X 8	7	105	\$ 11.78
AY	- 105	X 115	X 6	X 8	7	110	\$ 13.41
AY	- 110	X 120	X 6	X 8	7	115	\$ 14.35
AY	- 112	X 122	X 6	X 8	7	117	\$ 15.21
AY	- 115	X 125	X 6	X 8	7	120	\$ 15.98
AY	- 118	X 128	X 6	X 8	7	123	\$ 17.97
AY	- 120	X 130	X 6	X 8	7	125	\$ 18.11
AY	- 125	X 138	X 7	X 9.5	8	132	\$ 22.89
AY	- 130	X 143	X 7	X 9.5	8	137	\$ 24.89
AY	- 136	X 149	X 7	X 9.5	8	143	\$ 26.56
AY	- 140	X 153	X 7	X 9.5	8	147	\$ 27.47
AY	- 150	X 163	X 7	X 9.5	8	157	\$ 31.88
AY	- 155	X 168	X 7	X 9.5	8	162	\$ 34.55
AY	- 160	X 173	X 7	X 9.5	8	167	\$ 35.49
AY	- 165	X 178	X 7	X 9.5	8	172	\$ 38.09
AY	- 170	X 183	X 7	X 9.5	8	177	\$ 39.90
AY	- 175	X 188	X 7	X 9.5	8	182	\$ 41.64
AY	- 180	X 193	X 7	X 9.5	8	187	\$ 44.21
AY	- 190	X 203	X 7	X 9.5	8	197	\$ 48.69
AY	- 200	X 213	X 7	X 9.5	8	207	\$ 54.05
AY	- 210	X 223	X 7	X 9.5	8	217	\$ 60.22
AY	- 220	X 233	X 7	X 9.5	8	227	\$ 63.74
AY	- 230	X 243	X 9	X 11.5	10	234	\$ 70.00
AY	- 240	X 256	X 9	X 11.5	10	248	\$ 77.98
AY	- 250	X 265	X 9	X 11.5	10	258	\$ 100.99
AY	- 260	X 275	X 9	X 11.5	10	268	\$ 115.17
AY	- 270	X 285	X 9	X 11.5	10	278	\$ 125.63
AY	- 300	X 315	X 9	X 11.5	10	308	\$ 292.76