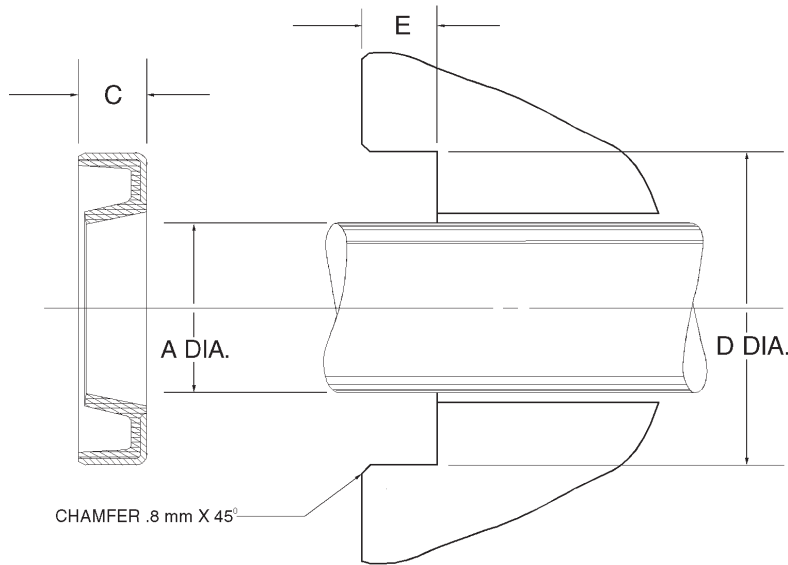


AM45 Type Metric Wipers



AM45 series wipers are predominately used as grease seals for hinge pin applications in heavy equipment. They are typically lighter duty seals and are not normally used as reciprocating wipers.

Temperature: -40 to 230F

AM45 Pin Wipers

Part Number					Price
Prefix	Rod Dia. A mm	Groove Dimensions		Groove Height E mm	
		Bore D mm H8	X		
AM45	- 40	X 50	X	3.18	\$ 11.63
AM45	- 40	X 50	X	4	\$ 11.63
AM45	- 40	X 50	X	5	\$ 11.63
AM45	- 45	X 55	X	3.18	\$ 11.63
AM45	- 45	X 55	X	4	\$ 11.63
AM45	- 45	X 55	X	6	\$ 11.63
AM45	- 50	X 60	X	4.5	\$ 11.63
AM45	- 50	X 60	X	5	\$ 12.97
AM45	- 55	X 65	X	3.18	\$ 11.63
AM45	- 60	X 75	X	5	\$ 13.17
AM45	- 60	X 75	X	8	\$ 14.04
AM45	- 63.45	X 88.9	X	6.4	\$ 16.61
AM45	- 65	X 80	X	5	\$ 15.99
AM45	- 65	X 80	X	8	\$ 13.58
AM45	- 70	X 80	X	5	\$ 13.89

Part Number					Price
Prefix	Rod Dia. A mm	Groove Dimensions		Groove Height E mm	
		Bore D mm H8	X		
AM45	- 70	X 85	X	5	\$ 15.84
AM45	- 70	X 85	X	8	\$ 16.71
AM45	- 71	X 86	X	5	\$ 25.88
AM45	- 75	X 89	X	8	\$ 19.22
AM45	- 75	X 90	X	6	\$ 16.50
AM45	- 75	X 90	X	8	\$ 16.71
AM45	- 80	X 95	X	5	\$ 20.86
AM45	- 80	X 95	X	6	\$ 20.86
AM45	- 85	X 100	X	8	\$ 22.91
AM45	- 90	X 105	X	6	\$ 19.37
AM45	- 90	X 105	X	8	\$ 21.47
AM45	- 95	X 110	X	8	\$ 23.73
AM45	- 100	X 115	X	6	\$ 23.93
AM45	- 105	X 120	X	7	\$ 26.09
AM45	- 110	X 125	X	4	\$ 35.88

New Seals are being added to inventory every day.