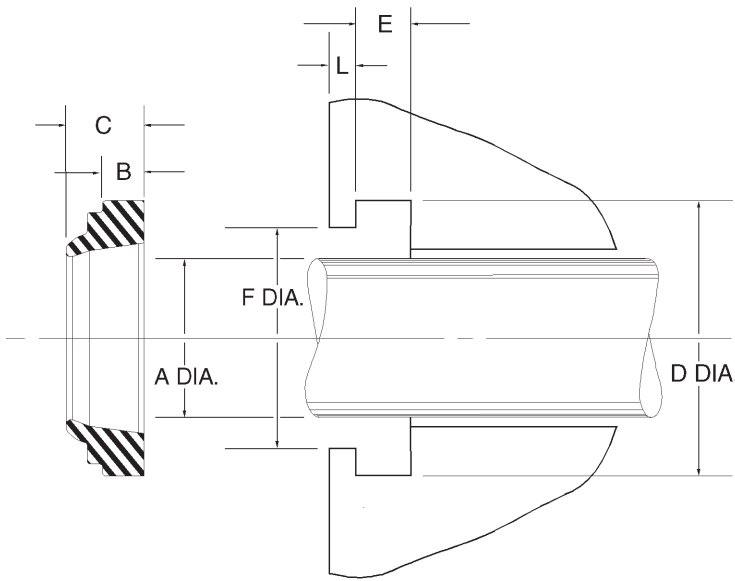


A41 Type Metric Nitrile Wipers



A41 series European wipers are made from 90 durometer nitrile. The function of the A41 style wiper is to keep dust, dirt, grains of sand, and metal chips from penetrating the rod gland. This is achieved by a special design which prevents the development of chamfers, protects the guiding parts, and extends the working life of the seals. Oversized diameters ensure a tight fit in the groove recess, thus preventing the penetration of foreign particles and dampness.

Temperature: -40 to 230F

A41 Wipers

Part Number						Groove Dimensions		Material	Price
Prefix	Rod Dia. A mm	Outside Dia. D mm H11	Groove Height E mm	Height C mm	F mm ±0.1	L mm ±0.2			
A41 - 8	X 16	X 4	X 7	14	1	Nitrile	\$ 3.47		
A41 - 10	X 18	X 4	X 7	16	1	Nitrile	\$ 3.47		
A41 - 12	X 18	X 2.6	X 5	16	1	Nitrile	\$ 3.47		
A41 - 12	X 20	X 4	X 7	18	1	Nitrile	\$ 3.47		
A41 - 14	X 22	X 4	X 7	20	1	Nitrile	\$ 3.47		
A41 - 15	X 23	X 4	X 7	21	1	Nitrile	\$ 3.56		
A41 - 16	X 24	X 4	X 7	22	1	Nitrile	\$ 3.56		
A41 - 16	X 24	X 4	X 7	22	1	Nitrile	\$ 3.56		
A41 - 18	X 26	X 4	X 7	24	1	Nitrile	\$ 3.56		
A41 - 20	X 28	X 4	X 7	26	1	Nitrile	\$ 3.56		
A41 - 22	X 30	X 4	X 7	28	1	Nitrile	\$ 3.56		
A41 - 24	X 32	X 4	X 7	30	1	Nitrile	\$ 3.94		
A41 - 25	X 33	X 4	X 7	31	1	Nitrile	\$ 4.28		
A41 - 28	X 36	X 4	X 7	34	1	Nitrile	\$ 4.38		
A41 - 28	X 36	X 4	X 7	34	1	Urethane	\$ 4.38		
A41 - 30	X 38	X 4	X 7	36	1	Nitrile	\$ 4.69		
A41 - 32	X 40	X 4	X 7	38	1	Nitrile	\$ 4.94		
A41 - 35	X 43	X 4	X 7	41	1	Nitrile	\$ 5.21		
A41 - 36	X 44	X 4	X 7	42	1	Nitrile	\$ 7.72		
A41 - 38	X 46	X 4	X 7	44	1	Nitrile	\$ 7.98		
A41 - 40	X 48	X 4	X 7	46	1	Nitrile	\$ 6.36		
A41 - 42	X 50	X 4	X 7	48	1	Nitrile	\$ 6.36		
A41 - 45	X 53	X 4	X 7	51	1	Nitrile	\$ 6.74		
A41 - 48	X 56	X 4	X 7	54	1	Nitrile	\$ 13.11		
A41 - 50	X 58	X 4	X 7	56	1	Nitrile	\$ 7.55		
A41 - 50	X 62	X 5.5	X 10	59	1.5	Nitrile	\$ 17.18		
A41 - 52	X 60	X 4	X 7	58	1	Nitrile	\$ 16.82		
A41 - 54	X 62	X 4	X 7	60	1	Nitrile	\$ 13.72		
A41 - 55	X 63	X 4	X 7	61	1	Nitrile	\$ 7.70		
A41 - 56	X 64	X 4	X 7	62	1	Nitrile	\$ 12.01		
A41 - 60	X 68	X 4	X 7	66	1	Nitrile	\$ 11.12		
A41 - 60	X 72	X 5.5	X 10	69	1.5	Nitrile	\$ 17.61		
A41 - 62	X 70	X 4	X 7	68	1	Urethane	\$ 11.88		
A41 - 63	X 71	X 4	X 7	69	1	Nitrile	\$ 14.53		
A41 - 65	X 73	X 4	X 7	71	1	Nitrile	\$ 12.84		

Part Number						Groove Dimensions		Material	Price
Prefix	Rod Dia. A mm	Outside Dia. D mm H11	Groove Height E mm	Height C mm	F mm ±0.1	L mm ±0.2			
A41 - 70	X 78	X 4	X 7	76	1	Nitrile	\$ 9.72		
A41 - 75	X 83	X 4	X 7	81	1	Nitrile	\$ 12.11		
A41 - 80	X 88	X 4	X 7	86	1	Nitrile	\$ 13.61		
A41 - 85	X 93	X 4	X 7	91	1	Nitrile	\$ 15.20		
A41 - 90	X 98	X 4	X 7	96	1	Nitrile	\$ 12.53		
A41 - 97	X 105	X 4	X 7	103	1	Nitrile	\$ 19.91		
A41 - 100	X 108	X 4	X 7	106	1	Nitrile	\$ 16.94		
A41 - 110	X 118	X 4	X 7	116	1	Nitrile	\$ 28.79		
A41 - 110	X 122	X 5.5	X 10	119	1.5	Nitrile	\$ 21.72		
A41 - 115	X 127	X 5.5	X 10	124	1.5	Nitrile	\$ 24.90		
A41 - 120	X 132	X 5.5	X 10	129	1.5	Nitrile	\$ 25.88		
A41 - 125	X 137	X 5.5	X 10	134	1.5	Nitrile	\$ 27.80		
A41 - 130	X 142	X 5.5	X 10	140	1.5	Nitrile	\$ 28.28		
A41 - 140	X 152	X 5.5	X 10	149	1.5	Nitrile	\$ 30.29		
A41 - 150	X 162	X 5.5	X 10	159	1.5	Nitrile	\$ 34.35		
A41 - 160	X 172	X 5.5	X 10	169	1.5	Nitrile	\$ 35.81		
A41 - 170	X 182	X 5.5	X 10	180	1.5	Nitrile	\$ 37.96		
A41 - 180	X 192	X 5.5	X 10	189	1.5	Nitrile	\$ 41.37		
A41 - 185	X 197	X 5.5	X 10	194	1.5	Nitrile	\$ 56.79		
A41 - 190	X 202	X 5.5	X 10	199	1.5	Nitrile	\$ 69.76		
A41 - 200	X 212	X 5.5	X 10	209	1.5	Nitrile	\$ 65.88		
A41 - 210	X 225	X 6.5	X 13	221	2	Nitrile	\$ 72.46		
A41 - 220	X 235	X 6.5	X 13	231	2	Nitrile	\$ 82.09		
A41 - 235	X 250	X 6.5	X 13	246	2	Nitrile	\$ 85.49		
A41 - 240	X 255	X 6.5	X 13	251	2	Nitrile	\$ 89.83		
A41 - 250	X 265	X 6.5	X 13	261	2	Nitrile	\$ 83.89		
A41 - 260	X 275	X 6.5	X 13	273	2	Nitrile	\$ 93.74		
A41 - 265	X 280	X 6.5	X 13	276	2	Nitrile	\$ 95.99		
A41 - 275	X 290	X 6.5	X 13	286	2	Nitrile	\$ 92.55		
A41 - 300	X 315	X 6.5	X 13	311	2	Nitrile	\$ 101.84		
A41 - 305	X 320	X 6.5	X 13	316	2	Nitrile	\$ 104.40		
A41 - 310	X 325	X 6.5	X 13	N/A	2	Nitrile	\$ 105.15		
A41 - 315	X 330	X 6.5	X 13	326	2	Nitrile	\$ 105.33		
A41 - 400	X 415	X 6.5	X 13	411	2	Nitrile	\$ 110.43		