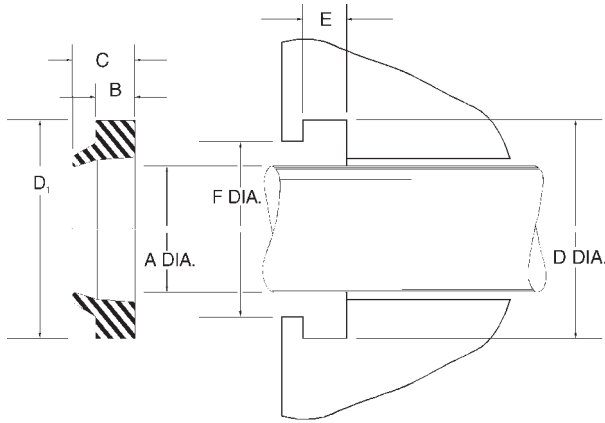


# A40 Type Metric Nitrile Wipers



Profile A40 wipers are manufactured from 90 durometer nitrile or 90 durometer urethane, (designated by P90 in part number). These rings can easily be snapped into grooves of relatively simple design. No close tolerances are needed.

Temperature: -40 to 230F

A40 Wipers

Part Number									Groove Dimensions			Price	
Prefix	Rod Dia. A mm	Outside Dia. D <sub>1</sub> mm	Base Height B mm	Total Height C mm	Material	D mm H11	E mm +0.1 -0.0	F mm H11					
A40 -	10	X	16	X	3.5	X	5	P90	16.6	3.8	13	\$	3.69
A40 -	12	X	18	X	4	X	7	P90	18.6	4	15	\$	4.14
A40 -	12	X	20	X	4	X	6	P90	20	4	14	\$	4.14
A40 -	14	X	22	X	4	X	6	P90	22	4	16	\$	4.14
A40 -	16	X	24	X	4	X	6	P90	24	4	18	\$	4.14
A40 -	18	X	26	X	4	X	6	P90	26	4	20	\$	4.14
A40 -	20	X	28	X	4	X	6	P90	28	4	22	\$	4.14
A40 -	20	X	28	X	5	X	7	P90	28.6	5.3	23	\$	4.20
A40 -	22	X	30	X	4	X	6	P90	30	4	24	\$	4.20
A40 -	22	X	30	X	5	X	7		30.6	5.3	25	\$	7.14
A40 -	24	X	32	X	5	X	7	P90	32.6	5.3	27	\$	4.95
A40 -	25	X	33	X	4	X	6	P90	33	4	27	\$	4.20
A40 -	25	X	33	X	5	X	7		33.6	5.3	28	\$	9.48
A40 -	25	X	33	X	5	X	6.4	P90	33	5	27	\$	4.20
A40 -	28	X	36	X	4	X	6	P90	36	4	30	\$	4.39
A40 -	28	X	36	X	5	X	6.4	P90	36	5	30	\$	4.40
A40 -	30	X	38	X	5	X	7	P90	38.6	5.3	33	\$	4.42
A40 -	30	X	42	X	6	X	9	P90	42	6	32	\$	4.44
A40 -	32	X	40	X	5	X	6.4	P90	40	5	34	\$	4.44
A40 -	32	X	40	X	5	X	7		40.6	5.3	35	\$	5.50
A40 -	32	X	44	X	6	X	9	P90	44	6	34	\$	4.46
A40 -	35	X	43	X	5	X	7	P90	43.6	5.3	38	\$	4.46
A40 -	35	X	47	X	6	X	9	P90	47	6	37	\$	4.46
A40 -	36	X	44	X	5	X	6.4	P90	44	5	38	\$	4.51
A40 -	36	X	44	X	5	X	7		44.6	5.3	39	\$	6.93
A40 -	36	X	48	X	6	X	9	P90	48	6	38	\$	4.53
A40 -	38	X	46	X	5	X	7	P90	46.6	5	41	\$	5.04
A40 -	40	X	48	X	5	X	6.4	P90	48	5	42	\$	4.53
A40 -	40	X	48	X	5	X	7		48.6	5.3	43	\$	7.06
A40 -	40	X	52	X	6	X	9	P90	52	6	42	\$	4.53
A40 -	42	X	50	X	5	X	7		50.6	5.3	45	\$	9.08
A40 -	42	X	54	X	6	X	9	P90	54	6	44	\$	4.66
A40 -	45	X	53	X	5	X	6.4	P90	53	5	47	\$	4.69
A40 -	45	X	55	X	5	X	7		55.6	5.3	52.6	\$	7.94
A40 -	45	X	57	X	6	X	9	P90	57	6	47	\$	7.76
A40 -	46	X	54	X	5	X	7	P90	54.6	5.3	49	\$	7.78
A40 -	50	X	58	X	5	X	6.4	P90	58	5	52	\$	7.80
A40 -	50	X	60	X	5	X	7		60.6	5.3	57.6	\$	9.67
A40 -	50	X	62	X	6	X	9	P90	62	6	52	\$	7.82
A40 -	50	X	65	X	4	X	7	P90	65.5	4.2	58	\$	8.60
A40 -	53	X	61	X	5	X	7	P90	61.6	5.3	56	\$	9.03
A40 -	55	X	63	X	5	X	7	P90	63.6	5.3	58	\$	7.84
A40 -	55	X	65	X	5	X	7	P90	65.6	5.3	62.6	\$	7.85
A40 -	55	X	67	X	6	X	9	P90	67	6	57	\$	7.85

## A40 Type Metric Nitrile Wipers, cont'd.

Part Number						Groove Dimensions			Price
Prefix	Rod Dia. A mm	Outside Dia. D <sub>1</sub> mm	Base Height B mm	Total Height C mm	Material	D mm H11	E mm +0.1 -0.0	F mm H11	
A40 -	56	X 64	X 5	X 7	P90	64.6	5.3	59	\$ 7.74
A40 -	56	X 66	X 5	X 7		66.6	5.3	63.6	\$ 8.09
A40 -	56	X 66	X 6.3	X 8.1	P90	66	6.3	58	\$ 8.11
A40 -	56	X 68	X 6	X 9	P90	68	6	58	\$ 8.40
A40 -	60	X 68	X 5	X 7		68.6	5.3	63	\$ 11.46
A40 -	60	X 70	X 5	X 7		70.6	5.3	67.6	\$ 10.85
A40 -	60	X 72	X 6	X 9	P90	72	6	62	\$ 8.59
A40 -	63	X 71	X 5	X 7		71.6	5.3	66	\$ 11.01
A40 -	63	X 73	X 6.3	X 8.1	P90	73	6.3	65	\$ 8.71
A40 -	63	X 75	X 6	X 9	P90	75	6	65	\$ 8.94
A40 -	65	X 73	X 5	X 7		73.6	5.3	68	\$ 12.03
A40 -	65	X 75	X 5	X 7		75.6	5.3	72.6	\$ 14.56
A40 -	65	X 77	X 6	X 9	P90	77	6	67	\$ 9.00
A40 -	70	X 78	X 5	X 7	P90	78.6	5.3	73	\$ 9.01
A40 -	70	X 80	X 5	X 7		80.6	5.3	77.6	\$ 10.61
A40 -	70	X 80	X 6.3	X 8.1	P90	80	6.3	77	\$ 9.02
A40 -	70	X 82	X 6	X 9	P90	82	6	77	\$ 9.37
A40 -	73	X 83	X 7	X 12	P90	83.6	7.3	76	\$ 10.56
A40 -	75	X 83	X 5	X 7		83.6	5.3	78	\$ 9.75
A40 -	75	X 83	X 5	X 7	P90	83.6	5.3	78	\$ 9.75
A40 -	78	X 86	X 5	X 7	P90	86.6	5.3	81	\$ 9.75
A40 -	80	X 88	X 5	X 7		88.6	5.3	83	\$ 9.79
A40 -	80	X 90	X 6.3	X 8.1	P90	90	6.3	87	\$ 9.79
A40 -	80	X 92	X 7	X 12	P90	92.2	7.1	86	\$ 10.77
A40 -	85	X 93	X 5	X 7	P90	93.6	5.3	88	\$ 10.77
A40 -	85	X 97	X 7	X 12	P90	97.2	7.1	91	\$ 18.99
A40 -	90	X 98	X 5	X 7		98.6	5.3	93	\$ 18.00
A40 -	90	X 100	X 6.3	X 8.1	P90	100	6.3	97	\$ 10.77
A40 -	90	X 102	X 7	X 12		102.2	7.1	96	\$ 19.36
A40 -	90	X 106	X 8	X 12		106	8	97	\$ 11.32
A40 -	97	X 105	X 5	X 7	P90	105.6	5.3	100	\$ 14.52
A40 -	100	X 108	X 5	X 7		108.6	5.3	103	\$ 21.83
A40 -	100	X 112	X 7	X 12		112.2	7.1	106	\$ 17.92
A40 -	100	X 112	X 7	X 12	P90	112.2	7.1	106	\$ 17.92
A40 -	100	X 115	X 6.3	X 8.1	P90	115	6.3	103	\$ 12.04
A40 -	100	X 116	X 8	X 12	P90	116	8	106	\$ 12.04
A40 -	105	X 121	X 8	X 12	P90	121	8	111	\$ 12.22
A40 -	110	X 118	X 5	X 7		118.6	5.3	113	\$ 20.38
A40 -	110	X 122	X 7	X 12		122.2	7.1	116	\$ 21.03
A40 -	110	X 122	X 7	X 12	P90	122.2	7.1	116	\$ 21.03
A40 -	110	X 125	X 9.5	X 12.5	P90	125	9.5	116	\$ 20.14
A40 -	115	X 125	X 7	X 12		125.2	7.1	121	\$ 33.05
A40 -	120	X 132	X 7	X 12	P90	132.2	7.1	126	\$ 21.04
A40 -	120	X 135	X 9.5	X 14		135	9.6	126	\$ 28.37
A40 -	125	X 137	X 7	X 12	P90	137.2	7.1	N/A	\$ 21.12
A40 -	125	X 140	X 9.5	X 12.5	P90	140	9.5	131	\$ 21.38
A40 -	125	X 140	X 10	X 16		140	10.2	132.6	\$ 28.89
A40 -	128	X 140	X 7	X 12	P90	140.2	7.1	134	\$ 21.70
A40 -	130	X 142	X 7	X 12	P90	142.2	7.1	136	\$ 21.97
A40 -	140	X 148	X 5	X 7		152.2	5.3	146	\$ 21.81
A40 -	140	X 152	X 7	X 12	P90	152.2	7.1	146	\$ 21.89
A40 -	140	X 155	X 9.5	X 12.5	P90	155	9.5	146	\$ 21.69
A40 -	140	X 155	X 10	X 16		155	10.2	147.6	\$ 21.69
A40 -	140	X 156	X 8	X 12	P90	156	8	146	\$ 21.69
A40 -	143	X 151	X 5.5	X 8	P90	151.6	5.3	146	\$ 24.26
A40 -	150	X 162	X 7	X 12		162	7.1	157.6	\$ 26.85
A40 -	150	X 165	X 10	X 16		165	10.2	157.6	\$ 37.03
A40 -	150	X 166	X 8	X 12	P90	166	8	156	\$ 41.26
A40 -	160	X 168	X 5	X 7		168.6	5.3	163	\$ 91.68
A40 -	160	X 175	X 9.5	X 12.5	P90	175	9.5	166	\$ 41.37
A40 -	160	X 175	X 10	X 16	P90	175	10.2	167.6	\$ 41.37

**A40 Wipers**

**A40 Type Metric Nitrile Wipers, cont'd.**

Prefix	Part Number						Groove Dimensions			Price			
	Rod Dia. A mm	Outside Dia. D <sub>1</sub> mm	Base Height B mm	Total Height C mm	Material	D mm H11	E mm +0.1 -0.0	F mm H11					
A40 -	160	X	176	X	8	X	12	P90	176	8	166	\$	41.37
A40 -	165	X	173	X	5	X	7		173	5.3	168	\$	26.74
A40 -	170	X	182	X	7	X	12		182.2	7.1	176	\$	39.83
A40 -	171	X	183	X	7	X	12		183.2	7.1	177	\$	44.85
A40 -	175	X	190	X	10	X	16		190.6	10.2	181	\$	53.92
A40 -	180	X	195	X	9.5	X	12.5	P90	195	9.5	186	\$	44.85
A40 -	180	X	200	X	10	X	15	P90	200	10.2	186	\$	47.74
A40 -	190	X	210	X	10	X	15	P90	210	10.2	196	\$	50.12
A40 -	200	X	215	X	9.5	X	12.5	P90	215	9.5	206	\$	54.18
A40 -	200	X	220	X	10	X	15	P90	220	10.2	207	\$	62.22
A40 -	220	X	240	X	10	X	18	P90	240	10.2	230	\$	64.40
A40 -	220	X	240	X	12.5	X	16.6	P90	240	12.5	227	\$	68.23
A40 -	230	X	250	X	10	X	16		250	10.2	240	\$	39.45
A40 -	240	X	260	X	10	X	18		260	10.2	250	\$	48.43
A40 -	250	X	270	X	10	X	18		270	10.2	260	\$	56.31
A40 -	250	X	270	X	12.5	X	16.6	P90	270	12.5	257	\$	74.87
A40 -	260	X	280	X	10	X	16		280	10.2	270	\$	58.99
A40 -	265	X	285	X	10	X	18		285	10.2	275	\$	144.16
A40 -	270	X	290	X	10	X	16		290	10.2	280	\$	66.91
A40 -	290	X	302	X	7	X	12		302.6	7.1	N/A	\$	237.45
A40 -	300	X	315	X	10	X	16		315.7	10.2	310	\$	69.72
A40 -	300	X	320	X	10	X	16		320	10.2	310	\$	74.46
A40 -	320	X	340	X	10	X	16		340	10.2	330	\$	151.69
A40 -	350	X	374	X	8	X	18		374.6	8	N/A	\$	293.30
A40 -	360	X	380	X	10	X	16		380	10.2	370	\$	174.30

A37 Wiper