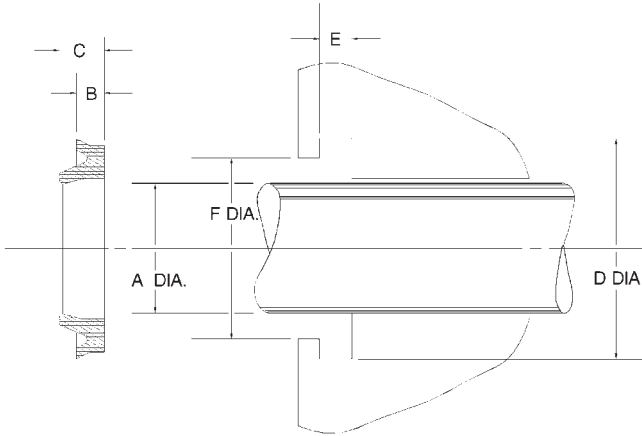


A37 Type Metric Urethane Wipers



A37 style wipers are made from 90 durometer urethane and are commonly found in Japanese hydraulics. The outer lip keeps contaminants from entering the system from the outside of the wiper groove.

Temperature: -40 to 230F

Prefix	Part Number				Groove Height E mm	Price
	Rod Dia.	O.D./ Bore D mm	Base Height	Total Height		
A37	- 35	X 43	X 5	X 7	6	\$ 8.48
A37	- 45	X 55	X 6	X 8	7	\$ 8.67
A37	- 50	X 60	X 6	X 8	7	\$ 9.26
A37	- 50	X 63	X 6	X 8	7	\$ 9.26
A37	- 55	X 65	X 6	X 8	7	\$ 9.56
A37	- 55	X 68	X 7	X 9.5	8	\$ 10.03
A37	- 60	X 73	X 7	X 9.5	8	\$ 11.40
A37	- 65	X 78	X 7	X 9.5	8	\$ 12.11
A37	- 70	X 83	X 7	X 9.5	8	\$ 13.36
A37	- 75	X 88	X 7	X 9.5	8	\$ 14.91
A37	- 80	X 93	X 7	X 9.5	8	\$ 15.61
A37	- 85	X 98	X 7	X 9.5	8	\$ 16.98
A37	- 90	X 103	X 7	X 9.5	8	\$ 20.00
A37	- 95	X 108	X 7	X 9.5	8	\$ 20.18
A37	- 100	X 113	X 7	X 9.5	8	\$ 21.25
A37	- 140	X 155	X 7	X 9.5	8	\$ 25.35

A37 Wiper