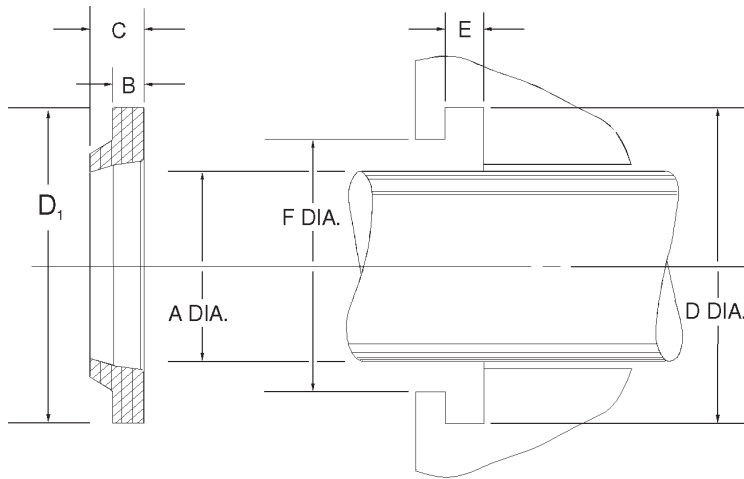


# 940 Type AN Urethane Wipers



"AN" (940) wipers are supplied in a high durometer urethane or hytrel material as standard. Also available in polymyte, fluoromyte, and viton.

Consult sales for special compound pricing.

Groove dimensions given meet ANSI/B93.35 1978 specifications (NFPA-T3-197.3RI).

Temperature: -65 to 200F

940 AN Wipers

Part No.	Wiper Dimensions (in.)				Groove Dimensions			Price
	Rod Dia. A	Outside Dia. D <sub>1</sub>	B Base Height	C Max. Length	D +.004 - .000	E ±.003	F +.005 - .000	
940-1	0.498	0.766	.104	3/16	0.760	.107	0.647	\$ 0.83
940-2	0.560	0.829	.104	3/16	0.823	.107	0.710	\$ 0.83
940-3	0.623	0.891	.104	3/16	0.885	.107	0.772	\$ 0.83
940-4	0.685	0.954	.104	3/16	0.948	.107	0.834	\$ 0.83
940-5	0.748	1.016	.104	3/16	1.010	.107	0.897	\$ 0.83
940-6	0.810	1.090	.104	3/16	1.084	.107	0.960	\$ 0.85
940-7	0.873	1.153	.104	3/16	1.147	.107	1.023	\$ 0.87
940-8	0.935	1.215	.104	3/16	1.209	.107	1.085	\$ 0.90
940-9	0.998	1.278	.104	3/16	1.272	.107	1.148	\$ 0.90
940-10	1.060	1.340	.104	3/16	1.334	.107	1.210	\$ 0.93
940-11	1.123	1.403	.104	3/16	1.397	.107	1.273	\$ 0.93
940-12	1.185	1.465	.104	3/16	1.459	.107	1.335	\$ 0.97
940-13	1.248	1.528	.104	3/16	1.522	.107	1.398	\$ 0.97
940-14	1.310	1.622	.104	3/16	1.614	.107	1.480	\$ 1.18
940-15	1.373	1.685	.104	3/16	1.677	.107	1.542	\$ 1.25
940-16	1.435	1.747	.104	3/16	1.739	.107	1.605	\$ 1.40
940-17	1.498	1.810	.104	3/16	1.802	.107	1.668	\$ 1.43
940-M	1.561	1.873	.104	3/16	1.865	.107	1.731	\$ 6.23
940-18	1.623	1.935	.104	3/16	1.927	.107	1.793	\$ 1.49
940-19	1.748	2.060	.104	3/16	2.052	.107	1.918	\$ 1.50
940-A	1.811	2.123	.104	3/16	2.115	.107	1.981	\$ 6.86
940-20	1.873	2.185	.104	3/16	2.177	.107	2.043	\$ 1.51
940-21	1.998	2.310	.104	3/16	2.302	.107	2.178	\$ 1.53
940-B	2.061	2.373	.104	3/16	2.365	.107	2.241	\$ 7.74
940-22	2.123	2.435	.104	3/16	2.427	.107	2.303	\$ 1.64
940-23	2.248	2.560	.104	3/16	2.552	.107	2.428	\$ 1.64
940-C	2.311	2.623	.104	3/16	2.615	.107	2.491	\$ 8.06
940-24	2.373	2.685	.104	3/16	2.677	.107	2.553	\$ 1.75
940-CC	2.435	2.747	.104	3/16	2.732	.107	2.615	\$ 8.25
940-25	2.498	2.810	.104	3/16	2.802	.107	2.678	\$ 1.81
940-D	2.561	2.873	.104	3/16	2.865	.107	2.741	\$ 8.42
940-26	2.623	2.999	.119	.211	2.989	.122	2.834	\$ 1.94
940-27	2.748	3.124	.119	.211	3.114	.122	2.959	\$ 1.94
940-28	2.873	3.249	.119	.211	3.239	.122	3.084	\$ 2.27
940-29	2.997	3.374	.119	.211	3.364	.122	3.209	\$ 2.27
940-30	3.122	3.499	.119	.211	3.489	.122	3.334	\$ 2.65
940-31	3.247	3.624	.119	.211	3.614	.122	3.459	\$ 2.65
940-32	3.372	3.749	.119	.211	3.739	.122	3.584	\$ 2.73
940-33	3.497	3.874	.119	.211	3.864	.122	3.709	\$ 2.73
940-34	3.622	3.999	.119	.211	3.989	.122	3.834	\$ 2.89
940-35	3.747	4.124	.119	.211	4.114	.122	3.959	\$ 2.89

Part No.	Wiper Dimensions				Groove Dimensions			Price
	Rod Dia. A	Outside Dia. D <sub>1</sub>	B Base Height	C Max. Length	D +.004 - .000	E ±.003	F +.005 - .000	
940-36	3.872	4.249	.119	.211	4.239	.122	4.084	\$ 3.02
940-37	3.997	4.439	.135	.238	4.427	.138	4.240	\$ 3.02
940-38	4.122	4.564	.135	.238	4.552	.138	4.365	\$ 3.21
940-39	4.247	4.689	.135	.238	4.677	.138	4.490	\$ 3.21
940-40	4.372	4.814	.135	.238	4.802	.138	4.615	\$ 3.29
940-41	4.497	4.939	.135	.238	4.927	.138	4.740	\$ 3.29
940-42	4.622	5.064	.135	.238	5.052	.138	4.865	\$ 3.40
940-43	4.747	5.189	.135	.238	5.177	.138	4.990	\$ 3.40
940-44	4.872	5.314	.135	.238	5.302	.138	5.115	\$ 3.53
940-45	4.997	5.439	.135	.238	5.427	.138	5.240	\$ 3.53
940-46	5.122	5.564	.135	.238	5.552	.138	5.365	\$ 3.66
940-47	5.247	5.689	.135	.238	5.677	.138	5.490	\$ 3.66
940-48	5.372	5.814	.135	.238	5.802	.138	5.615	\$ 3.76
940-49	5.497	5.939	.135	.238	5.927	.138	5.740	\$ 3.76
940-50	5.622	6.128	.151	.264	6.114	.154	5.896	\$ 3.95
940-51	5.747	6.254	.151	.264	6.239	.154	6.022	\$ 3.95
940-52	5.872	6.379	.151	.264	6.364	.154	6.146	\$ 4.23
940-53	5.997	6.504	.151	.264	6.489	.154	6.272	\$ 4.23
940-54	6.247	6.754	.151	.264	6.739	.154	6.522	\$ 4.38
940-55	6.497	7.004	.151	.264	6.989	.154	6.772	\$ 4.54
940-56	6.747	7.254	.151	.264	7.239	.154	7.022	\$ 5.14
940-57	6.997	7.504	.151	.264	7.489	.154	7.272	\$ 5.16
940-58	7.247	7.754	.151	.264	7.739	.154	7.522	\$ 15.28
940-L	7.372	7.879	.151	.264	7.864	.154	7.647	\$ 17.42
940-59	7.497	8.004	.151	.264	7.989	.154	7.772	\$ 17.42
940-60	7.747	8.254	.151	.264	8.239	.154	8.022	\$ 17.42
940-61	7.997	8.504	.151	.264	8.489	.154	8.272	\$ 12.12
940-DD	8.122	8.629	.151	.264	8.614	.154	8.397	\$ 17.42
940-62	8.497	9.004	.151	.264	8.989	.154	8.772	\$ 12.38
940-62.5	8.747	9.254	.151	.264	9.239	.154	9.022	\$ 21.39
940-63	8.997	9.504	.151	.264	9.489	.154	9.272	\$ 23.43
940-E	9.247	9.754	.151	.264	9.739	.154	9.522	\$ 24.49
940-64	9.497	10.004	.151	.264	9.989	.154	9.772	\$ 24.72
940-65	9.997	10.504	.151	.264	10.489	.154	10.272	\$ 22.51
940-66	10.497	11.004	.151	.264	10.989	.154	10.772	\$ 26.90
940-F	10.747	11.254	.151	.264	11.239	.154	11.022	\$ 35.23
940-67	10.997	11.504	.151	.264	11.489	.154	11.272	\$ 36.29
940-68	11.497	12.009	.166	.289	11.989	.169	11.772	\$ 38.38
940-69	11.997	12.509	.166	.289	12.489	.169	12.272	\$ 40.54
940-71	12.997	13.509	.166	.289	13.489	.169	13.272	\$ 70.45
940-K	13.747	14.259	.166	.289	14.239	.169	14.022	\$ 51.97