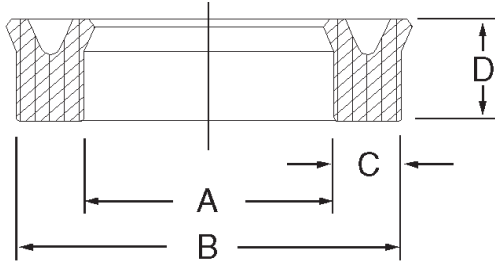


# Symmetrical Urethane U-Cups



US series urethane u-cups are symmetrical in design and may be used as rod or piston seals. Back-beveled knife-trimmed lips ensure a good seal with minimal friction.

Temperature: -65F to 200F

Pressure: 0 to 5000 psi

PART NUMBER	INSIDE DIAMETER A	OUTSIDE DIAMETER B	HEIGHT D	PRICE
-------------	-------------------	--------------------	----------	-------

PART NUMBER	INSIDE DIAMETER A	OUTSIDE DIAMETER B	HEIGHT D	PRICE
-------------	-------------------	--------------------	----------	-------

### 3/32" CROSS SECTION ("C")

US-09300562	9/16	3/4	3/32	\$ 2.87
-------------	------	-----	------	---------

### 1/8" CROSS SECTION ("C")

US-12500046	.046	.296	1/8	\$ 2.44
US-12500093	3/32	7/32	1/8	\$ 2.44
US-12500250-250	1/4	1/2	1/4	\$ 2.61
US-12500312	5/16	9/16	1/8	\$ 2.68
US-12500312-250	5/16	9/16	1/4	\$ 2.68
US-12500375-250	3/8	5/8	1/4	\$ 2.71
US-12500437-187	7/16	11/16	3/16	\$ 2.78
US-12500500	1/2	3/4	1/8	\$ 2.81
US-12500500-250	1/2	3/4	1/4	\$ 2.81
US-12500625	5/8	7/8	1/8	\$ 2.91
US-12500625-156	5/8	7/8	5/32	\$ 2.91
US-12500625-187	5/8	7/8	3/16	\$ 2.91
US-12500625-250	5/8	7/8	1/4	\$ 2.91
US-12500750	3/4	1	1/8	\$ 3.05
US-12500750-156	3/4	1	5/32	\$ 3.05
US-12500750-187	3/4	1	3/16	\$ 3.05

US-12500812-250	13/16	1-1/16	1/4	\$ 3.09
US-12500875-172	7/8	1-1/8	.172	\$ 3.16
US-12500875-250	7/8	1-1/8	1/4	\$ 3.16
US-12501000	1	1-1/4	1/8	\$ 3.28
US-12501000-250	1	1-1/4	1/4	\$ 3.28
US-12501125-187	1-1/8	1-3/8	3/16	\$ 3.42
US-12501250	1-1/4	1-1/2	1/8	\$ 3.56
US-12501250-187	1-1/4	1-1/2	3/16	\$ 3.56
US-12501250-250	1-1/4	1-1/2	1/4	\$ 3.56
US-12501375-156	1-3/8	1-5/8	5/32	\$ 3.70
US-12501375-187	1-3/8	1-5/8	3/16	\$ 3.70
US-12501500-156	1-1/2	1-3/4	5/32	\$ 3.85
US-12501500-187	1-1/2	1-3/4	3/16	\$ 3.85
US-12501500-250	1-1/2	1-3/4	1/4	\$ 3.85
US-12501750	1-3/4	2	1/8	\$ 4.18
US-12504750-187	4-3/4	5	3/16	\$ 12.48

### 3/16" CROSS SECTION ("C")

US-18700187-312	3/16	9/16	5/16	\$ 2.79
US-18700250-312	1/4	5/8	5/16	\$ 2.79
US-18700375	3/8	3/4	3/16	\$ 2.79
US-18700375-312	3/8	3/4	5/16	\$ 2.79
US-18700500-250	1/2	7/8	1/4	\$ 2.85
US-18700500-312	1/2	7/8	5/16	\$ 2.85
US-18700562	9/16	15/16	3/16	\$ 2.85
US-18700625-250	5/8	1	1/4	\$ 3.01
US-18700625-312	5/8	1	5/16	\$ 3.01
US-18700750-312	3/4	1-1/8	5/16	\$ 3.16
US-18700875-250	7/8	1-1/4	1/4	\$ 3.33
US-18700875-312	7/8	1-1/4	5/16	\$ 3.33
US-18701000	1	1-3/8	3/16	\$ 3.50
US-18701000-312	1	1-3/8	5/16	\$ 3.50
US-18701125	1-1/8	1-1/2	3/16	\$ 3.63
US-18701125-250	1-1/8	1-1/2	1/4	\$ 3.63
US-18701250-375	1-1/4	1-5/8	3/8	\$ 3.76
US-18701312-312	1-5/16	1-11/16	5/16	\$ 3.87
US-18701375-312	1-3/8	1-3/4	5/16	\$ 3.97
US-18701500	1-1/2	1-7/8	3/16	\$ 4.06
US-18701500-312	1-1/2	1-7/8	5/16	\$ 4.06
US-18701500-375	1-1/2	1-7/8	3/8	\$ 4.06
US-18701625	1-5/8	2	3/16	\$ 4.32
US-18701625-250	1-5/8	2	1/4	\$ 4.32
US-18701625-280	1-5/8	2	.280	\$ 4.32
US-18701625-312	1-5/8	2	5/16	\$ 4.32
US-18701625-375	1-5/8	2	3/8	\$ 4.32

US-18701750	1-3/4	2-1/8	3/16	\$ 4.56
US-18701750-250	1-3/4	2-1/8	1/4	\$ 4.56
US-18701750-312	1-3/4	2-1/8	5/16	\$ 4.56
US-18701750-375	1-3/4	2-1/8	3/8	\$ 4.56
US-18701875-280	1-7/8	2-1/4	.280	\$ 4.83
US-18702000-250	2	2-3/8	1/4	\$ 5.09
US-18702000-280	2	2-3/8	.280	\$ 5.09
US-18702000-312	2	2-3/8	5/16	\$ 5.09
US-18702000-375	2	2-3/8	3/8	\$ 5.09
US-18702125	2-1/8	2-1/2	3/16	\$ 5.48
US-18702125-312	2-1/8	2-1/2	5/16	\$ 5.48
US-18702125-375	2-1/8	2-1/2	3/8	\$ 5.53
US-18702250-312	2-1/4	2-5/8	5/16	\$ 5.67
US-18702500-312	2-1/2	2-7/8	5/16	\$ 6.15
US-18702500-375	2-1/2	2-7/8	3/8	\$ 6.15
US-18702625-375	2-5/8	3	3/8	\$ 6.39
US-1873000-375	3	3-3/8	3/8	\$ 7.09
US-18703125-375	3-1/8	3-1/2	3/8	\$ 7.54
US-18703500-375	3-1/2	3-7/8	3/8	\$ 8.83
US-18703625	3-5/8	4	3/16	\$ 9.29
US-18703625-250	3-5/8	4	1/4	\$ 9.29
US-18703625-375	3-5/8	4	3/8	\$ 9.29
US-18703875-375	3-7/8	4-1/4	3/8	\$ 10.31
US-18704000-375	4	4-3/8	3/8	\$ 10.83
US-18705000-375	5	5-3/8	3/8	\$ 14.80
US-18705500-375	5-1/2	5-7/8	3/8	\$ 16.79

**Symmetrical Urethane U-Cups, cont'd.**

Symmetrical Urethane U-Cups

PART NUMBER	INSIDE DIAMETER A	OUTSIDE DIAMETER B	HEIGHT D	PRICE
-------------	-------------------	--------------------	----------	-------

PART NUMBER	INSIDE DIAMETER A	OUTSIDE DIAMETER B	HEIGHT D	PRICE
-------------	-------------------	--------------------	----------	-------

**1/4" CROSS SECTION ("C")**

US-25000250-312	1/4	3/4	5/16	\$ 3.63
US-25000312	5/16	13/16	1/4	\$ 3.63
US-25000312-312	5/16	13/16	5/16	\$ 3.63
US-25000312-375	5/16	13/16	3/8	\$ 3.63
US-25000375-312	3/8	7/8	5/16	\$ 3.63
US-25000500	1/2	1	1/4	\$ 3.63
US-25000562	9/16	1-1/16	1/4	\$ 3.63
US-25000625-375	5/8	1-1/8	3/8	\$ 3.63
US-25000750	3/4	1-1/4	1/4	\$ 3.63
US-25000750-375	3/4	1-1/4	3/8	\$ 3.63
US-25001000	1	1-1/2	1/4	\$ 3.82
US-25001000-375	1	1-1/2	3/8	\$ 3.82
US-25001125	1-1/8	1-5/8	1/4	\$ 3.90
US-25001125-312	1-1/8	1-5/8	5/16	\$ 6.66
US-25001187	1-3/16	1-11/16	1/4	\$ 3.93
US-25001250	1-1/4	1-3/4	1/4	\$ 3.95
US-25001250-375	1-1/4	1-3/4	3/8	\$ 3.95
US-25001375-375	1-3/8	1-7/8	3/8	\$ 4.27
US-25001500-312	1-1/2	2	5/16	\$ 4.62
US-25001500-375	1-1/2	2	3/8	\$ 4.62
US-25001625-375	1-5/8	2-1/8	3/8	\$ 4.80
US-25001750-375	1-3/4	2-1/4	3/8	\$ 5.11
US-25002000-312	2	2-1/2	5/16	\$ 11.86
US-25002000-375	2	2-1/2	3/8	\$ 5.57

US-25002250-375	2-1/4	2-3/4	3/8	\$ 6.26
US-25002375-375	2-3/8	2-7/8	3/8	\$ 6.56
US-25002500-312	2-1/2	3	5/16	\$ 6.87
US-25002500-375	2-1/2	3	3/8	\$ 6.87
US-25002625-375	2-5/8	3-1/8	3/8	\$ 7.54
US-25002750	2-3/4	3-1/4	1/4	\$ 7.54
US-25002750-375	2-3/4	3-1/4	3/8	\$ 7.54
US-25003000-375	3	3-1/2	3/8	\$ 8.14
US-25003250-375	3-1/4	3-3/4	3/8	\$ 8.68
US-25003500-375	3-1/2	4	3/8	\$ 9.38
US-25003750-375	3-3/4	4-1/4	3/8	\$ 9.93
US-25004000-375	4	4-1/2	3/8	\$ 10.51
US-25004125-562	4-1/8	4-5/8	9/16	\$ 11.08
US-25004250-562	4-1/4	4-3/4	9/16	\$ 11.65
US-25004500-375	4-1/2	5	3/8	\$ 12.53
US-25004500-562	4-1/2	5	9/16	\$ 12.53
US-25005000-375	5	5-1/2	3/8	\$ 14.34
US-25005500-375	5-1/2	6	3/8	\$ 16.82
US-25005750-562	5-3/4	6-1/4	9/16	\$ 17.70
US-25006000-562	6	6-1/2	9/16	\$ 18.50
US-25006500-562	6-1/2	7	9/16	\$ 19.88
US-25007500	7-1/2	8	1/4	\$ 23.28
US-25007500-562	7-1/2	8	9/16	\$ 23.28
US-25009500	9-1/2	10	1/4	\$ 30.01

**5/16" CROSS SECTION ("C")**

US-31201250-375	1-1/4	1-7/8	3/8	\$ 4.71
US-31201375	1-3/8	2	5/16	\$ 4.90
US-31201500	1-1/2	2-1/8	5/16	\$ 5.47
US-31201750	1-3/4	2-3/8	5/16	\$ 6.05
US-31201875	1-7/8	2-1/2	5/16	\$ 6.39
US-31201875-500	1-7/8	2-1/2	1/2	\$ 6.39
US-31202000-375	2	2-5/8	3/8	\$ 6.73
US-31202250-500	2-1/4	2-7/8	1/2	\$ 7.39
US-31202375	2-3/8	3	5/16	\$ 9.94
US-31202500-375	2-1/2	3-1/8	3/8	\$ 8.02
US-31202625-500	2-5/8	3-1/4	1/2	\$ 8.33

US-31203125-500	3-1/8	3-3/4	1/2	\$ 9.78
US-31203375-375	3-3/8	4	3/8	\$ 10.48
US-31203875-500	3-7/8	4-1/2	1/2	\$ 12.01
US-31204375-375	4-3/8	5	3/8	\$ 13.51
US-31204375-562	4-3/8	5	9/16	\$ 13.51
US-31205250-500	5-1/4	5-7/8	1/2	\$ 17.26
US-31205375-375	5-3/8	6	3/8	\$ 17.79
US-31205375-596	5-3/8	6	9/16	\$ 17.79
US-31205375-625	5-3/8	6	5/8	\$ 17.79
US-31205625-625	5-5/8	6-1/4	5/8	\$ 18.92
US-31207375	7-3/8	8	5/16	\$ 25.71

**3/8" CROSS SECTION ("C")**

US-37502250-625	2-1/4	3	5/8	\$ 10.15
US-37502750	2-3/4	3-1/2	3/8	\$ 12.11
US-37502750-625	2-3/4	3-1/2	5/8	\$ 12.11
US-37503250	3-1/4	4	3/8	\$ 14.03
US-37503250-437	3-1/4	4	7/16	\$ 14.03
US-37503250-625	3-1/4	4	5/8	\$ 14.03
US-37503750	3-3/4	4-1/2	3/8	\$ 16.00
US-37504000-500	4	4-3/4	1/2	\$ 16.97
US-37504000-625	4	4-3/4	5/8	\$ 16.97
US-37504250	4-1/4	5	3/8	\$ 17.76
US-37504250-500	4-1/4	5	1/2	\$ 17.76
US-37504250-596	4-1/4	5	.596	\$ 17.76

US-37504250-750	4-1/4	5	3/4	\$ 17.76
US-37504500-500	4-1/2	5-1/4	1/2	\$ 18.66
US-37504750-625	4-3/4	5-1/2	5/8	\$ 19.50
US-37505000-500	5	5-3/4	1/2	\$ 20.44
US-37505250	5-1/4	6	3/8	\$ 21.28
US-37505750-500	5-3/4	6-1/2	1/2	\$ 22.93
US-37506250	6-1/4	7	3/8	\$ 24.27
US-37506250-625	6-1/4	7	5/8	\$ 24.27
US-37506750-500	6-3/4	7-1/2	1/2	\$ 26.01
US-37507250-625	7-1/4	8	5/8	\$ 28.05
US-37507500-500	7-1/2	8-1/4	1/2	\$ 28.52

**1/2" CROSS SECTION ("C")**

US-50004000-625	4	5	5/8	\$ 23.06
US-50005000-750-2	5	6	3/4	\$ 24.88

US-50007000-750	7	8	3/4	\$ 34.01
-----------------	---	---	-----	----------

**5/8" CROSS SECTION ("C")**

US-62504250-750	4-1/4	5-1/2	3/4	\$ 28.19
-----------------	-------	-------	-----	----------

US-62505250-750	5-1/4	6-1/2	3/4	\$ 36.23
-----------------	-------	-------	-----	----------