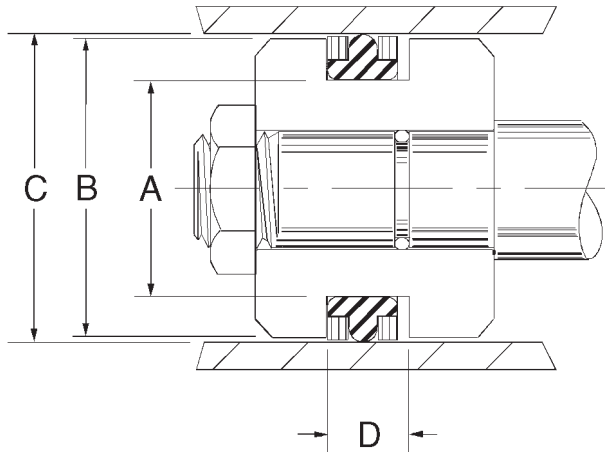
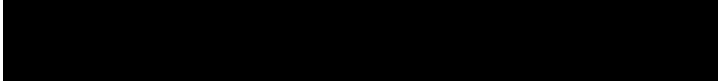


Wide Base T Seals



Wide Base T-seals fit into o-ring grooves designed for 1 or 2 backup rings. TPS prefix indicates 1 backup ring groove. TPT prefix indicates a 2 backup ring groove. No suffix indicates standard industrial groove. -1 suffix indicates Mil-G-5514F groove.

Temperature: -40 to 225F

Pressure: 0 to 5,000 PSI

Part Number	Bore Dia. C +.002/-	Groove Dia. A -.002/+ .000	Groove Width D +.010/- .000	Price
TPT028	2.500	2.128	0.405	
TPT031-1	2.875	2.503	0.424	\$ 17.42
TPT032	3.000	2.628	0.405	
TPT035-1	3.500	3.128	0.424	\$ 18.60
TPT039-1	4.000	3.628	0.424	\$ 20.93
TPT043-1	4.500	4.128	0.424	\$ 32.33
TPS047A-1	5.001	4.524	0.475	\$ 36.65
TPT047A-1	5.001	4.524	0.579	\$ 40.08
TPT051-1	5.501	5.024	0.579	\$ 43.57
TPT055-1	6.001	5.524	0.579	\$ 47.25
TPS058-1	6.501	6.024	0.579	\$ 48.95
TPS060-1	7.001	6.524	0.475	\$ 54.60
TPT060-1	7.001	6.524	0.579	\$ 52.79
TPS065-1	8.251	7.774	0.475	\$ 59.82
TPT073-1	12.001	11.524	0.579	\$ 92.87

Questions?

The Answer is Only a Toll-Free Phone Call Away.