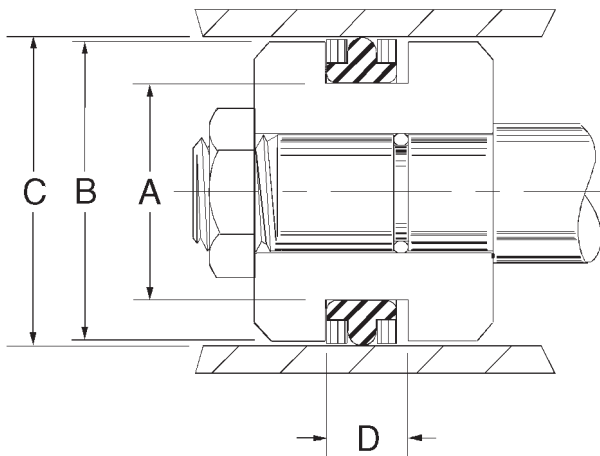


# Piston T Seals



Piston T-seals were originally developed to replace o-rings, and retrofit into standard commercial o-ring grooves. This development ended two serious reliability problems:

1. Extrusion through the clearance gap, and,
2. Spiral or twisting failure due to instability in their groove. T-seals' back-ups are hydraulically or pneumatically driven against the dynamic surface when system pressure forces the elastomer into the space beneath the back-up. This immediate response to pressure makes them very effective wipers, keeping contaminants away from the sealing line. Standard material for our T-seals is 75 durometer nitrile with moly-filled nylon back-up rings. Other materials are available upon request.

Industrial piston T-seals are also available to fit one and two back-up o-ring grooves. Please refer to Wide Base T-seals in this section.

Temperature: -40 to 225F

Pressure: 0 to 5,000 PSI

Part No.	Nominal Size			C Bore Dia.	A Groove Dia.	D Groove Length	B Piston Dia.	Price
	O.D.	I.D.	Width					
				±.001	+ .002 - .000	+ .005 - .000	±.001	
TP001	3/8	3/16	5/32	0.375	0.190	0.150	0.371	\$ 4.00
TP002	7/16	1/4	5/32	0.437	0.252	0.150	0.433	\$ 4.07
TP003	1/2	5/16	5/32	0.500	0.315	0.150	0.496	\$ 4.14
TP004	9/16	5/16	3/16	0.563	0.317	0.185	0.558	\$ 4.22
TP005	5/8	3/8	3/16	0.625	0.380	0.185	0.621	\$ 4.27
TP006	11/16	7/16	3/16	0.687	0.442	0.185	0.683	\$ 4.35
TP007	3/4	1/2	3/16	0.750	0.505	0.185	0.746	\$ 4.42
TP008	13/16	9/16	3/16	0.812	0.567	0.185	0.808	\$ 4.56
TP009	7/8	5/8	3/16	0.875	0.630	0.185	0.871	\$ 4.63
TP010	15/16	11/16	3/16	0.937	0.692	0.185	0.933	\$ 4.71
TP011	1	3/4	3/16	1.001	0.756	0.185	0.997	\$ 3.86
TP012	1-1/16	13/16	3/16	1.063	0.818	0.185	1.059	\$ 4.99
TP013	1-1/8	7/8	3/16	1.126	0.881	0.185	1.122	\$ 3.91
TP014	1-3/16	15/16	3/16	1.188	0.943	0.185	1.184	\$ 5.26
TP015	1-1/4	1	3/16	1.251	1.006	0.185	1.247	\$ 3.94
TP016	1-5/16	1-1/16	3/16	1.313	1.068	0.185	1.309	\$ 5.59
TP017	1-3/8	1-1/8	3/16	1.376	1.131	0.185	1.372	\$ 4.51
TP018	1-7/16	1-3/16	3/16	1.438	1.193	0.185	1.434	\$ 6.03
TP019	1-1/2	1-1/4	3/16	1.501	1.256	0.185	1.497	\$ 4.77
TP020	1-9/16	1-5/16	3/16	1.563	1.318	0.185	1.559	\$ 6.44
TP021	1-5/8	1-3/8	3/16	1.626	1.381	0.185	1.622	\$ 4.82
TP022	1-3/4	1-1/2	3/16	1.751	1.506	0.185	1.747	\$ 4.81
TP023	1-7/8	1-1/2	9/32	1.876	1.502	0.280	1.872	\$ 6.25
TP024	2	1-5/8	9/32	2.001	1.627	0.280	1.997	\$ 5.51
TP025	2-1/8	1-3/4	9/32	2.126	1.752	0.280	2.122	\$ 9.13
TP026	2-1/4	1-7/8	9/32	2.251	1.877	0.280	2.247	\$ 6.15
TP027	2-3/8	2	9/32	2.376	2.002	0.280	2.372	\$ 10.18
TP028	2-1/2	2-1/8	9/32	2.501	2.127	0.280	2.497	\$ 6.82
TP029	2-5/8	2-1/4	9/32	2.626	2.252	0.280	2.620	\$ 11.23
				±.002	+ .003 - .001		±.002	
TP030	2-3/4	2-3/8	9/32	2.751	2.377	0.280	2.745	\$ 9.13
TP031	2-7/8	2-1/2	9/32	2.876	2.502	0.280	2.870	\$ 12.29
TP032	3	2-5/8	9/32	3.001	2.627	0.280	2.995	\$ 8.01
TP033	3-1/8	2-3/4	9/32	3.126	2.752	0.280	3.120	\$ 13.33
TP034	3-1/4	2-7/8	9/32	3.251	2.877	0.280	3.245	\$ 9.36
TP035	3-1/2	3-1/8	9/32	3.502	3.128	0.280	3.496	\$ 16.14

Part No.	Nominal Size			C Bore Dia.	A Groove Dia.	D Groove Length	B Piston Dia.	Price
	O.D.	I.D.	Width					
				±.002	+ .003 - .001	+ .005 - .001	±.002	
TP036	3-5/8	3-1/4	9/32	3.627	3.253	2.800	3.621	\$ 15.95
TP037	3-3/4	3-3/8	9/32	3.752	3.378	0.280	3.746	\$ 18.23
TP038	3-7/8	3-1/2	9/32	3.877	3.503	0.280	3.871	\$ 12.48
TP039	4	3-5/8	9/32	4.002	3.628	0.280	3.996	\$ 12.91
TP040	4-1/8	3-3/4	9/32	4.127	3.753	0.280	4.121	\$ 21.75
TP041	4-1/4	3-7/8	9/32	4.252	3.878	0.280	4.246	\$ 22.47
TP042	4-3/8	4	9/32	4.377	4.003	0.280	4.371	\$ 23.85
TP043	4-1/2	4-1/8	9/32	4.502	4.128	0.280	4.496	\$ 19.56
TP044	4-5/8	4-1/4	9/32	4.627	4.253	0.280	4.621	\$ 25.97
TP045	4-3/4	4-3/8	9/32	4.752	4.378	0.280	4.746	\$ 21.18
TP046	4-7/8	4-1/2	9/32	4.877	4.503	0.280	4.871	\$ 29.47
TP047	5	4-5/8	9/32	5.002	4.628	0.280	4.997	\$ 23.90
TP048	5-1/8	4-5/8	3/8	5.127	4.753	0.366	5.122	\$ 32.99
TP049	5-1/4	4-3/4	3/8	5.252	4.878	0.366	5.247	\$ 34.40
TP050	5-3/8	4-7/8	3/8	5.377	5.003	0.366	5.372	\$ 35.80
TP051	5-1/2	5	3/8	5.502	5.128	0.366	5.497	\$ 28.77
TP052	5-5/8	5-1/8	3/8	5.627	5.253	0.366	5.622	\$ 38.59
TP053	5-3/4	5-1/4	3/8	5.752	5.378	0.366	5.747	\$ 40.03
TP054	5-7/8	5-3/8	3/8	5.877	5.503	0.366	5.874	\$ 41.40
TP055	6	5-1/2	3/8	6.002	5.628	0.366	5.997	\$ 40.50
TP056	6-1/8	5-5/8	3/8	6.127	5.753	0.366	6.122	\$ 43.50
				±.003	+ .004 - .002		±.003	
TP057	6-1/4	5-3/4	3/8	6.252	5.878	0.366	6.247	\$ 46.08
TP058	6-1/2	6	3/8	6.377	6.003	0.366	6.372	\$ 47.60
TP059	6-3/4	6-1/4	3/8	6.502	6.128	0.366	6.497	\$ 49.13
TP060	7	6-1/2	3/8	7.002	6.628	0.366	6.997	\$ 50.52
TP061	7-1/4	6-3/4	3/8	7.252	6.878	0.366	7.247	\$ 52.69
TP062	7-1/2	7	3/8	7.502	7.128	0.366	7.497	\$ 54.72
TP063	7-3/4	7-1/4	3/8	7.752	7.378	0.366	7.747	\$ 56.86
TP064	8	7-1/2	3/8	8.002	7.628	0.366	7.997	\$ 58.29
TP065	8-1/4	7-3/4	3/8	8.252	7.878	0.366	8.247	\$ 61.76
TP066	8-1/2	8	3/8	8.502	8.128	0.366	8.497	\$ 67.36
TP067	9	8-1/2	3/8	9.002	8.628	0.366	8.997	\$ 71.57
TP068	9-1/2	9	3/8	9.502	9.128	0.366	9.497	\$ 77.90
TP069	10	9-1/2	3/8	10.002	9.628	0.366	9.997	\$ 84.21
TP070	10-1/2	10	3/8	10.502	10.128	0.366	10.497	\$ 88.41
TP071	11	10-1/2	3/8	11.002	10.628	0.366	10.997	\$ 99.64
TP072	11-1/2	11	3/8	11.502	11.128	0.366	11.497	\$ 112.19
TP073	12	11-1/2	3/8	12.002	11.628	0.366	11.997	\$ 119.83