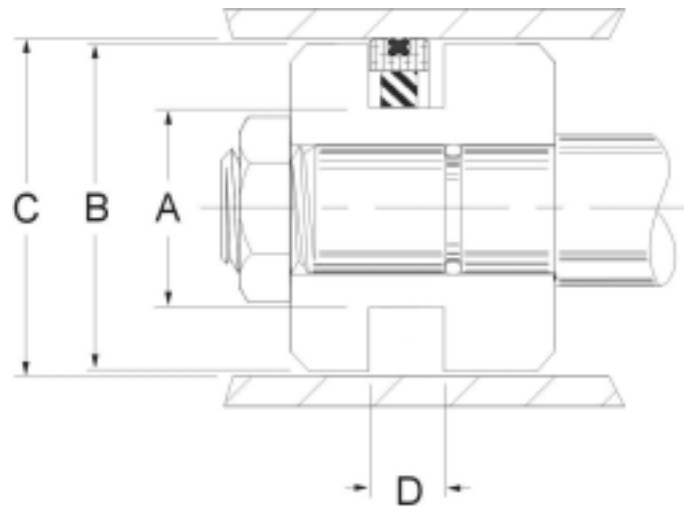


ASQ TFE Piston Seals

| Part Number | Bore Dia. C m m H 9 | Groove Dia. A m m F 8 | Groove Width D m m +0.2/-0 | Price |
|---------------------|---------------------------|-----------------------------|----------------------------------|-----------|
| Inch Sizes | | | | |
| | +.004/-.000 | +.000/-.006 | | |
| ASQE-24B | 1.500 | 0.884 | .288/.293 | \$ 26.77 |
| ASQE-28B | 1.750 | 1.134 | .288/.293 | \$ 28.93 |
| ASQE-32B | 2.000 | 1.384 | .288/.293 | \$ 29.56 |
| ASQE-36B | 2.250 | 1.634 | .288/.293 | \$ 30.87 |
| ASQE-40B | 2.500 | 1.884 | .288/.293 | \$ 32.31 |
| ASQE-44B | 2.750 | 2.134 | .288/.293 | \$ 33.95 |
| ASQE-48B | 3.000 | 2.384 | .288/.293 | \$ 35.08 |
| ASQE-52B | 3.250 | 2.634 | .288/.293 | \$ 36.46 |
| ASQE-56B | 3.500 | 2.884 | .288/.293 | \$ 37.88 |
| ASQE-60B | 3.750 | 3.134 | .288/.293 | \$ 39.12 |
| ASQE-64B | 4.000 | 3.384 | .288/.293 | \$ 41.79 |
| ASQE-72B | 4.500 | 3.884 | .288/.293 | \$ 43.36 |
| ASQE-80B | 5.000 | 4.384 | .288/.293 | \$ 46.85 |
| ASQE-88B | 5.500 | 4.660 | .375/.380 | \$ 55.29 |
| ASQE-96B | 6.000 | 5.160 | .375/.380 | \$ 63.86 |
| ASQE-100B | 6.250 | 5.410 | .375/.380 | \$ 72.43 |
| ASQE-104B | 6.500 | 5.660 | .375/.380 | \$ 74.99 |
| ASQE-112B | 7.000 | 6.160 | .375/.380 | \$ 77.81 |
| ASQE-128B | 8.000 | 7.170 | .375/.380 | \$ 83.62 |
| ASQE-144B | 9.000 | 8.170 | .375/.380 | \$ 98.55 |
| ASQE-160B | 10.000 | 9.165 | .375/.380 | \$ 136.37 |
| Metric Sizes | | | | |
| | +1/-0 MM | +0/-15 MM | +2/-0 MM | |
| ASQE-50MMB-6.3 | 50.0 | 34.5 | 6.3 | \$ 33.90 |
| ASQE-60MMB-6.3 | 60.0 | 44.5 | 6.3 | \$ 35.65 |
| ASQE-63MMB-6.3 | 63.0 | 47.5 | 6.3 | \$ 37.41 |
| ASQE-70MMB-6.3 | 70.0 | 54.5 | 6.3 | \$ 39.16 |
| ASQE-75MMB-6.3 | 75.0 | 59.5 | 6.3 | \$ 40.92 |
| ASQE-80MMB-6.3 | 80.0 | 64.5 | 6.3 | \$ 42.68 |
| ASQE-90MMB-6.3 | 90.0 | 74.5 | 6.3 | \$ 44.43 |
| ASQE-100MMB-6.3 | 100.0 | 84.5 | 6.3 | \$ 46.19 |
| ASQE-110MMB-6.3 | 110.0 | 94.5 | 6.3 | \$ 47.94 |
| ASQE-120MMB-6.3 | 120.0 | 104.5 | 6.3 | \$ 49.70 |
| ASQE-130MMB-6.3 | 130.0 | 114.5 | 6.3 | \$ 51.46 |
| ASQE-140MMB-8.1 | 140.0 | 115.5 | 8.1 | \$ 63.85 |
| ASQE-150MMB-8.1 | 150.0 | 125.5 | 8.1 | \$ 71.08 |
| ASQE-160MMB-8.1 | 160.0 | 135.5 | 8.1 | \$ 78.31 |
| ASQE-170MMB-8.1 | 170.0 | 145.5 | 8.1 | \$ 85.54 |
| ASQE-180MMB-8.1 | 180.0 | 155.5 | 8.1 | \$ 92.77 |
| ASQE-200MMB-8.1 | 200.0 | 175.5 | 8.1 | \$ 107.23 |
| ASQE-220MMB-8.1 | 220.0 | 195.5 | 8.1 | \$ 121.69 |
| ASQE-240MMB-8.1 | 240.0 | 215.5 | 8.1 | \$ 136.15 |
| ASQE-250MMB-8.1 | 250.0 | 225.5 | 8.1 | \$ 143.38 |
| ASQE-260MMB-8.1 | 260.0 | 232.0 | 8.1 | \$ 150.61 |



ASQ Teflon Piston Seals

This piston seal is a 3 piece assembly consisting of a nitrile energizer, a bronze-filled teflon grooved cap ring, with a nitrile quad ring inserted in the groove. The ASQ seal combines low friction and positive sealing. They are often found in load holding applications where drift is unacceptable. Other configurations and materials are available.

Temperature: -40 to 225F

Pressure: 0 to 5,000 PSI

Problems?

Contact our
problem solving
sales team.