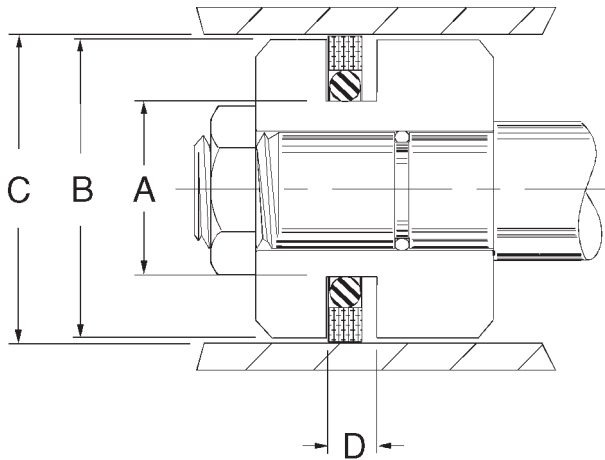


AS800 TFE Piston Seals



AS800 style square piston seal assemblies are made from glass filled TFE and include an o-ring energizer. This popular medium duty assembly assures dependable service to a wide variety of sealing applications from rotary swivels to reciprocating cylinders.

Temperature: -40 to 225F

Pressure: 0 to 3,000 PSI

AS800 Teflon Piston Seals

Part Number	Bore Dia. C ±.001	Piston Dia. B ±.001	Groove Dia. A ±.002	Groove Width D ±.002	Wall & Width D ₁	Price
AS800E-8	0.500	0.497	0.241	0.083	.070	\$ 2.33
AS800E-10	0.625	0.622	0.366	0.083	.070	\$ 2.40
AS800E-12	0.750	0.747	0.491	0.083	.070	\$ 2.45
AS800E-14	0.875	0.872	0.616	0.083	.070	\$ 2.74
AS800E-16	1.000	0.997	0.741	0.083	.070	\$ 2.94
AS800E-18	1.125	1.122	0.866	0.083	.070	\$ 2.99
AS800E-20	1.250	1.247	0.991	0.083	.070	\$ 3.08
AS800E-22	1.375	1.372	1.116	0.083	.070	\$ 3.18
AS800E-24	1.500	1.497	1.241	0.083	.070	\$ 2.64
AS800E-25	1.562	1.559	1.172	0.122	.109	\$ 3.34
AS800E-26	1.625	1.622	1.235	0.122	.109	\$ 3.43
AS800E-27	1.687	1.684	1.297	0.122	.109	\$ 4.07
AS800E-28	1.750	1.747	1.360	0.122	.109	\$ 2.76
AS800E-29	1.812	1.809	1.422	0.122	.109	\$ 4.24
AS800E-30	1.875	1.872	1.485	0.122	.109	\$ 3.82
AS800E-31	1.938	1.935	1.548	0.122	.109	\$ 4.58
AS800E-32	2.000	1.996	1.606	0.130	.115	\$ 2.85
AS800E-34	2.125	2.121	1.731	0.130	.115	\$ 5.03
AS800E-36	2.250	2.246	1.856	0.130	.115	\$ 4.16
AS800E-38	2.375	2.371	1.981	0.130	.115	\$ 5.27
AS800E-40	2.500	2.496	2.106	0.130	.115	\$ 2.99
AS800E-42	2.625	2.621	2.231	0.130	.115	\$ 4.36
AS800E-44	2.750	2.746	2.356	0.130	.115	\$ 4.40
AS800E-46	2.875	2.871	2.481	0.130	.115	\$ 4.41
AS800E-48	3.000	2.996	2.606	0.130	.115	\$ 3.10
AS800E-52	3.250	3.246	2.856	0.130	.115	\$ 4.75
AS800E-54	3.375	3.371	2.981	0.130	.115	\$ 16.59
AS800E-56	3.500	3.496	3.106	0.130	.115	\$ 3.25
AS800E-58	3.625	3.621	3.231	0.130	.115	\$ 5.09
AS800E-60	3.750	3.746	3.356	0.130	.115	\$ 5.17
AS800E-64	4.000	3.996	3.606	0.130	.115	\$ 3.59
AS800E-68	4.250	4.246	3.856	0.130	.115	\$ 5.63
AS800E-72	4.500	4.496	4.106	0.130	.115	\$ 4.00
AS800E-76	4.750	4.746	4.356	0.130	.115	\$ 6.15
AS800E-78	4.875	4.871	4.481	0.130	.115	\$ 8.20

Part Number	Bore Dia. C ±.001	Piston Dia. B ±.001	Groove Dia. A ±.002	Groove Width D ±.002	Wall & Width D ₁	Price
AS800E-80	5.000	4.996	4.606	0.130	.115	\$ 6.36
AS800E-84	5.250	5.246	4.856	0.130	.115	\$ 6.74
AS800E-88	5.500	5.496	5.106	0.130	.115	\$ 6.98
AS800E-92	5.750	5.746	5.232	0.159	.143	\$ 7.15
AS800E-94	5.875	5.871	5.357	0.159	.143	\$ 9.91
AS800E-96	6.000	5.996	5.482	0.159	.143	\$ 7.59
AS800E-100	6.250	6.246	5.732	0.159	.143	\$ 8.69
AS800E-104	6.500	6.496	5.982	0.159	.143	\$ 9.20
AS800E-108	6.750	6.746	6.232	0.159	.143	\$ 9.68
AS800E-112	7.000	6.996	6.482	0.159	.143	\$ 10.11
AS800E-114	7.125	7.121	6.607	0.159	.143	\$ 29.39
AS800E-116	7.250	7.246	6.732	0.159	.143	\$ 11.51
AS800E-120	7.500	7.496	6.982	0.159	.143	\$ 12.70
AS800E-124	7.750	7.746	7.232	0.159	.143	\$ 13.92
AS800E-128	8.000	7.996	7.482	0.159	.143	\$ 15.05
AS800E-132	8.250	8.246	7.732	0.159	.143	\$ 15.56
AS800E-136	8.500	8.496	7.982	0.159	.143	\$ 18.11
AS800E-140	8.750	8.746	8.232	0.159	.143	\$ 19.72
AS800E-144	9.000	8.996	8.482	0.159	.143	\$ 22.03
AS800E-148	9.250	9.246	8.732	0.159	.143	\$ 22.87
AS800E-152	9.500	9.496	8.982	0.159	.143	\$ 24.05
AS800E-156	9.750	9.746	9.232	0.159	.143	\$ 59.52
AS800E-160	10.000	9.996	9.482	0.159	.143	\$ 27.13
AS800E-164	10.250	10.246	9.732	0.159	.143	\$ 64.41
AS800E-168	10.500	10.496	9.982	0.159	.143	\$ 39.32
AS800E-172	10.750	10.746	10.232	0.159	.143	\$ 70.56
AS800E-176	11.000	10.996	10.482	0.159	.143	\$ 41.78
AS800E-184	11.500	11.496	10.982	0.159	.143	\$ 43.10
AS800E-192	12.000	11.996	11.482	0.159	.143	\$ 45.34
AS800E-200	12.500	12.496	11.982	0.159	.143	\$ 50.18
AS800E-208	13.000	12.996	12.482	0.159	.143	\$ 58.65
AS800E-224	14.000	13.996	13.482	0.159	.143	\$ 65.81
AS800E-240	15.000	14.996	14.482	0.159	.143	\$ 106.12
AS800E-256	16.000	15.996	15.482	0.159	.143	\$ 124.52