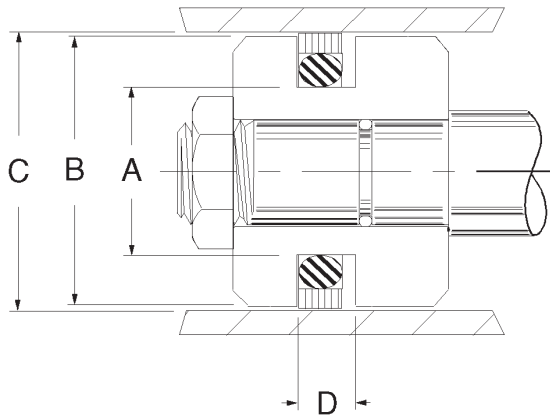
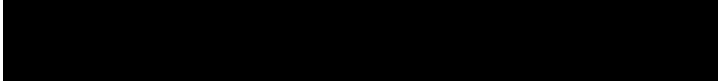


914 Piston Seals



Genuine Chem-Cast® piston rings consist of a moly/glass-filled nylon step cut outer ring with a precision milled joint, together with a carboxylated nitrile 90 durometer oval expander ring. The expander ring is designed so as not to pinch between the joint of the outer ring during installation. These rings will pass a small port with no problem and can handle large diametrical clearances. It is the seal of choice for super-heavy duty applications. Many OEM's have adopted this seal due to its superior sealing ability, wear resistance, and port passing capabilities. Do not cut rings down for any reason.

Temperature: -40 to 250F

Pressure: 0 to 10,000 PSI

Part Number	Outside Dia. C	Height D	Price
914-2500-312	2-1/2	X 5/16	\$ 44.73
914-3500-3505	3-1/2	X 9/32	\$ 52.70
914-3500-312	3-1/2	X 5/16	\$ 48.38
914-3750-312	3-3/4	X 5/16	\$ 48.72
914-3997-4000	4	X 9/32	\$ 43.90
914-4500-4505	4-1/2	X 9/32	\$ 49.86
914-4500-312	4-1/2	X 5/16	\$ 47.80
914-5000-5005	5	X 9/32	\$ 50.84
914-5000-375	5	X 3/8	\$ 56.37
914-5500-5505	5-1/2	X 3/8	\$ 59.54
914-5525-5530	5.530	X 3/8	\$ 69.91
914-6000-375	6	X 3/8	\$ 61.20
914-7000-375	7	X 3/8	\$ 62.15
914-7285-7290	7.285	X 3/8	\$ 72.43
914-7500-7505	7-1/2	X 3/8	\$ 63.74
914-8437-8442	8-7/16	X 3/8	\$ 75.33
914-8500-375	8-1/2	X 3/8	\$ 68.75
914-9000-375	9	X 3/8	\$ 99.44
914-10000-10005	10	X 3/8	\$ 146.51
914-11000-11005	11	X 3/8	\$ 160.07
914-11995-12000	12	X 3/8	\$ 172.24

OK / 914 Piston Seals