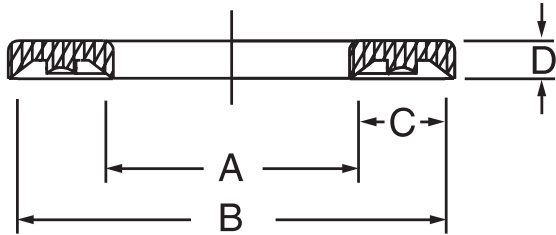


# Pip Rings



Pip (pressure inverting pedestal) rings convert type "B" loaded lip seals into bi-directional seals. Pip rings are made from a harder durometer urethane material and may be split for easier installation.

PART NUMBER	INSIDE DIAMETER A	OUTSIDE DIAMETER B	HEIGHT D	PRICE
-------------	-------------------	--------------------	----------	-------

PART NUMBER	INSIDE DIAMETER A	OUTSIDE DIAMETER B	HEIGHT D	PRICE
-------------	-------------------	--------------------	----------	-------

### 1/8" CROSS SECTION ("C")

12500438PR	7/16	11/16	1/16	\$ 1.96
12500500PR	1/2	3/4	1/16	\$ 1.96
12500750PR	3/4	1	1/16	\$ 2.06
12501000PR	1	1-1/4	1/16	\$ 2.27

12501250PR	1-1/4	1-1/2	1/16	\$ 2.44
12501500PR	1-1/2	1-3/4	1/16	\$ 2.63
12501750PR	1-3/4	2	1/16	\$ 2.79
12502000PR	2	2-1/4	1/16	\$ 2.94

### 3/16" CROSS SECTION ("C")

18700625PR	5/8	1	1/16	\$ 2.17
18700750PR	3/4	1-1/8	1/16	\$ 2.27
18700875PR	7/8	1-1/4	1/16	\$ 2.41
18700937PR	15/16	1-5/16	1/16	\$ 2.46
18701000PR	1	1-3/8	1/16	\$ 2.51
18701125PR	1-1/8	1-1/2	1/16	\$ 2.63
18701250PR	1-1/4	1-5/8	1/16	\$ 2.72
18701375PR	1-3/8	1-3/4	1/16	\$ 2.83
18701500PR	1-1/2	1-7/8	1/16	\$ 2.91
18701625PR	1-5/8	2	1/16	\$ 3.01
18701750PR	1-3/4	2-1/8	1/16	\$ 3.09

18702000PR	2	2-3/8	1/16	\$ 3.24
18702375PR	2-3/8	2-3/4	1/16	\$ 3.47
18702500PR	2-1/2	2-7/8	1/16	\$ 3.52
18702625PR	2-5/8	3	1/16	\$ 3.68
18702750PR	2-3/4	3-1/8	1/16	\$ 3.82
18703000PR	3	3-3/8	1/16	\$ 4.06
18703125PR	3-1/8	3-1/2	1/16	\$ 4.34
18703250PR	3-1/4	3-5/8	1/16	\$ 4.57
18703375PR	3-3/8	3-3/4	1/16	\$ 4.85
18703625PR	3-5/8	4	1/16	\$ 5.32
18704000PR	4	4-3/8	1/16	\$ 6.09

### 1/4" CROSS SECTION ("C")

25001000PR	1	1-1/2	1/8	\$ 2.77
25001250PR	1-1/4	1-3/4	1/8	\$ 2.90
25001500PR	1-1/2	2	1/8	\$ 3.35
25001750PR	1-3/4	2-1/4	1/8	\$ 3.69
25001937PR	1-15/16	2-7/16	1/8	\$ 3.99
25002000PR	2	2-1/2	1/8	\$ 4.10
25002250PR	2-1/4	2-3/4	1/8	\$ 4.49
25002500PR	2-1/2	3	1/8	\$ 4.93
25002750PR	2-3/4	3-1/4	1/8	\$ 5.34
25002875PR	2-7/8	3-3/8	1/8	\$ 5.55
25003000PR	3	3-1/2	1/8	\$ 5.74
25003250PR	3-1/4	3-3/4	1/8	\$ 6.15

25003500PR	3-1/2	4	1/8	\$ 6.60
25003750PR	3-3/4	4-1/4	1/8	\$ 7.03
25004000PR	4	4-1/2	1/8	\$ 7.45
25004250PR	4-1/4	4-3/4	1/8	\$ 7.84
25004500PR	4-1/2	5	1/8	\$ 8.27
25005000PR	5	5-1/2	1/8	\$ 9.10
25005250PR	5-1/4	5-3/4	1/8	\$ 9.51
25005500PR	5-1/2	6	1/8	\$ 9.94
25006000PR	6	6-1/2	1/8	\$ 10.82
25006500PR	6-1/2	7	1/8	\$ 11.26
25007000PR	7	7-1/2	1/8	\$ 12.25

### 5/16" CROSS SECTION ("C")

31201875PR	1-7/8	2-1/2	5/32	\$ 3.53
31202375PR	2-3/8	3	5/32	\$ 4.27
31203375PR	3-3/8	4	5/32	\$ 5.81
31204375PR	4-3/8	5	5/32	\$ 7.50

31204500PR	4-1/2	5-1/8	5/32	\$ 7.68
31205500PR	5-1/2	6-1/8	5/32	\$ 9.16
31206375PR	6-3/8	7	5/32	\$ 10.14

### 3/8" CROSS SECTION ("C")

37502000PR	2	2-3/4	3/16	\$ 6.62
37502250PR	2-1/4	3	3/16	\$ 7.42
37502500PR	2-1/2	3-1/4	3/16	\$ 8.02
37502750PR	2-3/4	3-1/2	3/16	\$ 8.81

37503250PR	3-1/4	4	3/16	\$ 10.17
37503500PR	3-1/2	4-1/4	3/16	\$ 10.95
37503750PR	3-3/4	4-1/2	3/16	\$ 11.51
37504000PR	4	4-3/4	3/16	\$ 12.25

**Pip Rings Cont'd.**

PART NUMBER	INSIDE DIAMETER A	OUTSIDE DIAMETER B	HEIGHT D	PRICE
-------------	-------------------	--------------------	----------	-------

PART NUMBER	INSIDE DIAMETER A	OUTSIDE DIAMETER B	HEIGHT D	PRICE
-------------	-------------------	--------------------	----------	-------

**3/8" CROSS SECTION ("C") cont'd.**

37504250PR	4-1/4	5	3/16	\$ 13.00
37504750PR	4-3/4	5-1/2	3/16	\$ 14.35
37505250PR	5-1/4	6	3/16	\$ 15.81
37505500PR	5-1/2	6-1/4	3/16	\$ 16.36
37505750PR	5-3/4	6-1/2	3/16	\$ 17.20
37506250PR	6-1/4	7	3/16	\$ 17.75

37506750PR	6-3/4	7-1/2	3/16	\$ 18.81
37507250PR	7-1/4	8	3/16	\$ 20.00
37508250PR	8-1/4	9	3/16	\$ 22.64
37508500PR	8-1/2	9-1/4	3/16	\$ 23.23
37508750PR	8-3/4	9-1/2	3/16	\$ 23.85
37509500PR	9-1/2	10-1/4	3/16	\$ 23.85

**1/2" CROSS SECTION ("C")**

50003500PR	3-1/2	4-1/2	3/16	\$ 14.78
50004000PR	4	5	3/16	\$ 16.73
50005000PR	5	6	3/16	\$ 20.43
50005250PR	5-1/4	6-1/4	3/16	\$ 21.29
50006000PR	6	7	3/16	\$ 23.34
50007000PR	7	8	3/16	\$ 24.92
50008000PR	8	9	3/16	\$ 27.79
50009000PR	9	10	3/16	\$ 30.97

50009500PR	9-1/2	10-1/2	3/16	\$ 33.11
50011000PR	11	12	3/16	\$ 38.25
50011875PR	11-7/8	12-7/8	3/16	\$ 40.90
50014000PR	14	15	3/16	\$ 59.38
50015000PR	15	16	3/16	\$ 65.73
50020000PR	20	21	3/16	\$ 82.42
50029000PR	29	30	3/16	\$ 235.58

**5/8" CROSS SECTION ("C")**

62507000PR	7	8-1/4	5/16	\$ 33.30
62507250PR	7-1/4	8-1/2	5/16	\$ 33.97

62507500PR	7-1/2	8-3/4	5/16	\$ 35.14
------------	-------	-------	------	----------

*We carry many **special** items that are too numerous for inclusion in our catalog. In-house machining, manufacturing and die cutting capabilities are more added value.*