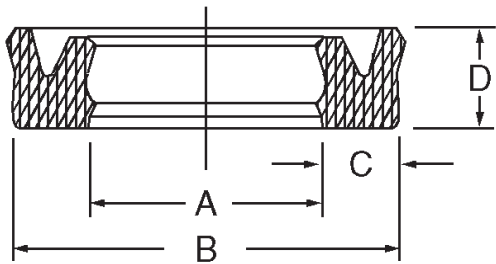


# BS Type Urethane Rod U-Cups



The "BS" series hydraulic rod seal is ideally suited for heavy-duty mobile and stationary service where leakage must be held to an absolute minimum. This unique geometry is highly resistant to side loading and insensitive to pressure spikes. The "BS" profile reduces or eliminates leakage under severe operating conditions. It also reduces wear and "dry run". Rod lubricant is retained in the cavity formed by the secondary lip providing exceptionally low running friction even at low velocities. Sealing performance is outstanding ... even at 0 PSI.

Temperature: -50F to 230F

Pressure: 0 to 6000 psi

BS Type Rod U-Cups

PART NUMBER	INSIDE DIAMETER A	OUTSIDE DIAMETER B	HEIGHT D	PRICE
-------------	-------------------	--------------------	----------	-------

PART NUMBER	INSIDE DIAMETER A	OUTSIDE DIAMETER B	HEIGHT D	PRICE
-------------	-------------------	--------------------	----------	-------

### .120" CROSS SECTION ("C")

BS-12001000-187	1	1.240	3/16	\$ 4.53
-----------------	---	-------	------	---------

BS-12001125-192	1-1/8	1.365	.192	\$ 4.72
-----------------	-------	-------	------	---------

### 1/8" CROSS SECTION ("C")

BS-12500375-198	3/8	5/8	.198	\$ 3.90
BS-12500500-187	1/2	3/4	3/16	\$ 3.90
BS-12500562-187	9/16	13/16	3/16	\$ 3.95
BS-12500625-187	5/8	7/8	3/16	\$ 4.06
BS-12500625-250	5/8	7/8	1/4	\$ 4.11
BS-12500687-187	11/16	15/16	3/16	\$ 4.19
BS-12500750	3/4	1	1/8	\$ 4.23
BS-12500750-187	3/4	1	3/16	\$ 4.29
BS-12500750-250	3/4	1	1/4	\$ 4.29
BS-12500812-187	13/16	1-1/16	3/16	\$ 4.31
BS-12500812-250	13/16	1-1/16	1/4	\$ 4.36
BS-12500875-187	7/8	1-1/8	3/16	\$ 4.47
BS-12500875-250	7/8	1-1/8	1/4	\$ 4.54
BS-12501000-187	1	1-1/4	3/16	\$ 4.63
BS-12501000-250	1	1-1/4	1/4	\$ 4.63

BS-12501062-187	1-1/16	1-5/16	3/16	\$ 4.58
BS-12501062-250	1-1/16	1-5/16	1/4	\$ 4.58
BS-12501125-187	1-1/8	1-3/8	3/16	\$ 4.64
BS-12501125-250	1-1/8	1-3/8	1/4	\$ 4.72
BS-12501250-187	1-1/4	1-1/2	3/16	\$ 5.01
BS-12501250-250	1-1/4	1-1/2	1/4	\$ 4.90
BS-12501375-187	1-3/8	1-5/8	3/16	\$ 5.23
BS-12501375-250	1-3/8	1-5/8	1/4	\$ 5.23
BS-12501500-187	1-1/2	1-3/4	3/16	\$ 4.90
BS-12501500-250	1-1/2	1-3/4	1/4	\$ 5.32
BS-12501625-250	1-5/8	1-7/8	1/4	\$ 5.54
BS-12501750-250	1-3/4	2	1/4	\$ 5.76
BS-12502000-187	2	2-1/4	3/16	\$ 6.39
BS-12502000-250	2	2-1/4	1/4	\$ 6.27

### .137" CROSS SECTION ("C")

BS-13701125-187	1-1/8	1.399	3/16	\$ 4.72
-----------------	-------	-------	------	---------

### 5/32" CROSS SECTION ("C")

BS-15601000-250	1	1-5/16	1/4	\$ 4.79
-----------------	---	--------	-----	---------

BS-15601375-250	1-3/8	1-11/16	1/4	\$ 5.40
-----------------	-------	---------	-----	---------

### 3/16" CROSS SECTION ("C")

BS-18700750-312	3/4	1-1/8	5/16	\$ 4.70
BS-18700875-250	7/8	1-1/4	1/4	\$ 4.72
BS-18701000-250	1	1-3/8	1/4	\$ 4.95
BS-18701000-312	1	1-3/8	5/16	\$ 4.95
BS-18701125-312	1-1/8	1-1/2	5/16	\$ 5.11
BS-18701187-250	1-3/16	1-9/16	1/4	\$ 5.16
BS-18701250	1-1/4	1-5/8	3/16	\$ 5.18
BS-18701250-227	1-1/4	1-5/8	.227	\$ 5.21
BS-18701250-250	1-1/4	1-5/8	1/4	\$ 5.25
BS-18701250-312	1-1/4	1-5/8	5/16	\$ 5.30
BS-18701375	1-3/8	1-3/4	3/16	\$ 5.34
BS-18701375-312	1-3/8	1-3/4	5/16	\$ 5.45
BS-18701437-312	1-7/16	1-13/16	5/16	\$ 5.60
BS-18701500-250	1-1/2	1-7/8	1/4	\$ 5.60
BS-18701500-312	1-1/2	1-7/8	5/16	\$ 5.71
BS-18701500-375	1-1/2	1-7/8	3/8	\$ 5.71
BS-18701625-281	1-5/8	2	9/32	\$ 6.07
BS-18701625-375	1-5/8	2	3/8	\$ 6.07
BS-18701750-250	1-3/4	2-1/8	1/4	\$ 5.93
BS-18701750-312	1-3/4	2-1/8	5/16	\$ 5.93
BS-18701750-375	1-3/4	2-1/8	3/8	\$ 6.43

BS-18701875-375	1-7/8	2-1/4	3/8	\$ 6.81
BS-18702000-250	2	2-3/8	1/4	\$ 7.07
BS-18702000-312	2	2-3/8	5/16	\$ 7.16
BS-18702000-375	2	2-3/8	3/8	\$ 7.16
BS-18702125-375	2-1/8	2-1/2	3/8	\$ 7.73
BS-18702250-335	2-1/4	2-5/8	.335	\$ 7.80
BS-18702250-375	2-1/4	2-5/8	3/8	\$ 8.02
BS-18702375-375	2-3/8	2-3/4	3/8	\$ 8.13
BS-18702500-312	2-1/2	2-7/8	5/16	\$ 8.17
BS-18702500-375	2-1/2	2-7/8	3/8	\$ 8.34
BS-18702625-375	2-5/8	3	3/8	\$ 8.68
BS-18702750-375	2-3/4	3-1/8	3/8	\$ 9.15
BS-18702875-375	2-7/8	3-1/4	3/8	\$ 9.62
BS-18703000-375	3	3-3/8	3/8	\$ 9.79
BS-18703125-625	3-1/8	3-1/2	5/8	\$ 12.52
BS-18703250-375	3-1/4	3-5/8	3/8	\$ 11.21
BS-18703250-562	3-1/4	3-5/8	9/16	\$ 11.75
BS-18703500-375	3-1/2	3-7/8	3/8	\$ 11.80
BS-18703750-375	3-3/4	4-1/8	3/8	\$ 11.99
BS-18704000-375	4	4-3/8	3/8	\$ 12.51

**BS Type Urethane Rod U-Cups, cont'd.**

BS Type Rod U-Cups

PART NUMBER	INSIDE DIAMETER A	OUTSIDE DIAMETER B	HEIGHT D	PRICE
-------------	-------------------	--------------------	----------	-------

PART NUMBER	INSIDE DIAMETER A	OUTSIDE DIAMETER B	HEIGHT D	PRICE
-------------	-------------------	--------------------	----------	-------

**7/32" CROSS SECTION ("C")**

BS-21802500-284	2-1/2	2-15/16	.284	\$ 9.17
BS-21802500-375	2-1/2	2-15/16	0.284	\$ 9.17

BS-21803000-375	3	3-7/16	3/8	\$ 10.60
-----------------	---	--------	-----	----------

**1/4" CROSS SECTION ("C")**

BS-25000875-341	7/8	1-3/8	.341	\$ 4.53
BS-25001000-341	1	1-1/2	.341	\$ 5.27
BS-25001000-375	1	1-1/2	3/8	\$ 5.27
BS-25001125	1-1/8	1-5/8	1/4	\$ 5.38
BS-25001250	1-1/4	1-3/4	1/4	\$ 5.44
BS-25001250-375	1-1/4	1-3/4	3/8	\$ 5.57
BS-25001375-375	1-3/8	1-7/8	3/8	\$ 5.89
BS-25001500	1-1/2	2	1/4	\$ 6.38
BS-25001500-341	1-1/2	2	.341	\$ 6.38
BS-25001500-375	1-1/2	2	3/8	\$ 6.51
BS-25001625-375	1-5/8	2-1/8	3/8	\$ 7.01
BS-25001750-341	1-3/4	2-1/4	.341	\$ 7.03
BS-25001750-375	1-3/4	2-1/4	3/8	\$ 7.20
BS-25001750-500	1-3/4	2-1/4	1/2	\$ 7.03
BS-25001875-375	1-7/8	2-3/8	3/8	\$ 6.64
BS-25002000	2	2-1/2	1/4	\$ 7.26
BS-25002000-312	2	2-1/2	5/16	\$ 7.70
BS-25002000-341	2	2-1/2	.341	\$ 7.70
BS-25002000-375	2	2-1/2	3/8	\$ 7.85
BS-25002250-341	2-1/4	2-3/4	.341	\$ 8.64
BS-25002250-375	2-1/4	2-3/4	3/8	\$ 8.83
BS-25002375-375	2-3/8	2-7/8	3/8	\$ 9.32
BS-25002500	2-1/2	3	1/4	\$ 9.38
BS-25002500-284	2-1/2	3	.284	\$ 9.49
BS-25002500-375	2-1/2	3	3/8	\$ 9.69
BS-25002625-375	2-5/8	3-1/8	3/8	\$ 10.15
BS-25002625-500	2-5/8	3-1/8	1/2	\$ 10.61
BS-25002750-375	2-3/4	3-1/4	3/8	\$ 10.62
BS-25003000-375	3	3-1/2	3/8	\$ 11.49
BS-25003000-625	3	3-1/2	5/8	\$ 11.25
BS-25003000-781	3	3-1/2	13/16	\$ 11.73
BS-25003250-375	3-1/4	3-3/4	3/8	\$ 12.26

BS-25003500-312	3-1/2	4	5/16	\$ 12.46
BS-25003500-375	3-1/2	4	3/8	\$ 12.96
BS-25003625-375	3-5/8	4-1/8	3/8	\$ 13.28
BS-25003750-375	3-3/4	4-1/4	3/8	\$ 13.47
BS-25003750-500	3-3/4	4-1/4	1/2	\$ 13.86
BS-25003750-562	3-3/4	4-1/4	9/16	\$ 14.21
BS-25004000-312	4	4-1/2	5/16	\$ 14.51
BS-25004000-375	4	4-1/2	3/8	\$ 14.51
BS-25004000-562	4	4-1/2	9/16	\$ 14.51
BS-25004000-781	4	4-1/2	25/32	\$ 15.48
BS-25004250-562	4-1/4	4-3/4	9/16	\$ 16.43
BS-25004500-375	4-1/2	5	3/8	\$ 17.66
BS-25004750-625	4-3/4	5-1/4	5/8	\$ 20.08
BS-25005000-375	5	5-1/2	3/8	\$ 20.22
BS-25005000-562	5	5-1/2	9/16	\$ 20.21
BS-25005000-781	5	5-1/2	25/32	\$ 20.21
BS-25005125-562	5-1/8	5-5/8	9/16	\$ 20.93
BS-25005375-625	5-3/8	5-7/8	5/8	\$ 22.99
BS-25005500-375	5-1/2	6	3/8	\$ 23.14
BS-25005500-562	5-1/2	6	9/16	\$ 23.28
BS-25005750-375	5-3/4	6-1/4	3/8	\$ 24.28
BS-25006000-562	6	6-1/2	9/16	\$ 24.70
BS-25006000-781	6	6-1/2	25/32	\$ 25.49
BS-25006500-375	6-1/2	7	3/8	\$ 28.04
BS-25007000-562	7	7-1/2	9/16	\$ 28.53
BS-25007000-781	7	7-1/2	25/32	\$ 29.05
BS-25008000-562	8	8-1/2	9/16	\$ 33.25
BS-25008125-781	8-1/8	8-5/8	25/32	\$ 34.26
BS-25009000-562	9	9-1/2	9/16	\$ 35.26
BS-25009375-781	9-3/8	9-7/8	25/32	\$ 39.31
BS-25010000-562	10	10-1/2	9/16	\$ 42.17

**.266" CROSS SECTION ("C")**

BS-26605000-557	5	5-17/32	.557	\$ 20.21
BS-26606000-562	6	6-17/32	9/16	\$ 25.49

BS-26607000-562	7	7-17/32	9/16	\$ 29.63
-----------------	---	---------	------	----------

**5/16" CROSS SECTION ("C")**

BS-31201125-397	1-1/8	1-3/4	.397	\$ 6.15
BS-31201250-397	1-1/4	1-7/8	.397	\$ 6.27
BS-31201375-397	1-3/8	2	.397	\$ 6.72
BS-31201500-375	1-1/2	2-1/8	3/8	\$ 7.22
BS-31201500-397	1-1/2	2-1/8	.397	\$ 7.51
BS-31201750-437	1-3/4	2-3/8	7/16	\$ 8.20
BS-31201875-397	1-7/8	2-1/2	.397	\$ 8.78
BS-31202000	2	2-5/8	5/16	\$ 9.30
BS-31202000-397	2	2-5/8	.397	\$ 9.30
BS-31202000-500	2	2-5/8	1/2	\$ 9.30
BS-31202500-500	2-1/2	3-1/8	1/2	\$ 11.10
BS-31202625-625	2-5/8	3-1/4	5/8	\$ 11.45
BS-31202750-375	2-3/4	3-3/8	3/8	\$ 11.67
BS-31202750-500	2-3/4	3-3/8	1/2	\$ 12.10

BS-31203000-500	3	3-5/8	1/2	\$ 13.00
BS-31203250-500	3-1/4	3-7/8	1/2	\$ 13.66
BS-31203375-594	3-3/8	4	.594	\$ 14.42
BS-31203375-625	3-3/8	4	5/8	\$ 14.68
BS-31203500-500	3-1/2	4-1/8	1/2	\$ 15.03
BS-31204000-375	4	4-5/8	3/8	\$ 16.65
BS-31204000-500	4	4-5/8	1/2	\$ 17.11
BS-31204500-500	4-1/2	5-1/8	1/2	\$ 19.22
BS-31204500-625	4-1/2	5-1/8	5/8	\$ 19.33
BS-31204625-625	4-5/8	5-1/4	5/8	\$ 19.84
BS-31205000-500	5	5-5/8	1/2	\$ 19.94
BS-31205375-625	5-3/8	6	5/8	\$ 24.21
BS-31205500	5-1/2	6-1/8	5/16	\$ 26.39

**BS Type Urethane Rod U-Cups, cont'd.**

BS Type Rod U-Cups

PART NUMBER	INSIDE DIAMETER A	OUTSIDE DIAMETER B	HEIGHT D	PRICE
-------------	-------------------	--------------------	----------	-------

PART NUMBER	INSIDE DIAMETER A	OUTSIDE DIAMETER B	HEIGHT D	PRICE
-------------	-------------------	--------------------	----------	-------

**3/8" CROSS SECTION ("C")**

BS-37502000-625	2	2-3/4	5/8	\$ 12.60
BS-37502250-511	2-1/4	3	.511	\$ 13.94
BS-37502500-625	2-1/2	3-1/4	5/8	\$ 15.34
BS-37502750-625	2-3/4	3-1/2	5/8	\$ 17.09
BS-37503000-625	3	3-3/4	5/8	\$ 18.25
BS-37503500-625	3-1/2	4-1/4	5/8	\$ 21.16
BS-37504000-500	4	4-3/4	1/2	\$ 23.64
BS-37504000-625	4	4-3/4	5/8	\$ 23.93
BS-37504250-625	4-1/4	5	5/8	\$ 24.54
BS-37504500-625	4-1/2	5-1/4	5/8	\$ 25.76

BS-37505000-500	5	5-3/4	1/2	\$ 28.81
BS-37505000-625	5	5-3/4	5/8	\$ 28.24
BS-37505500-625	5-1/2	6-1/4	5/8	\$ 30.58
BS-37506000-625	6	6-3/4	5/8	\$ 31.45
BS-37506500-625	6-1/2	7-1/4	5/8	\$ 34.70
BS-37507000-625	7	7-3/4	5/8	\$ 37.09
BS-37507750-625	7-3/4	8-1/2	5/8	\$ 40.39
BS-37508000-625	8	8-3/4	5/8	\$ 42.45
BS-37509250-625	9-1/4	10	5/8	\$ 44.20

**7/16" CROSS SECTION ("C")**

BS-43703875-750	3-7/8	4-3/4	3/4	\$ 27.45
BS-43704750-750	4-3/4	5-5/8	3/4	\$ 29.15

BS-43705125-500	5-1/8	6	1/2	\$ 29.78
-----------------	-------	---	-----	----------

*If you don't see it... ASK!!!*