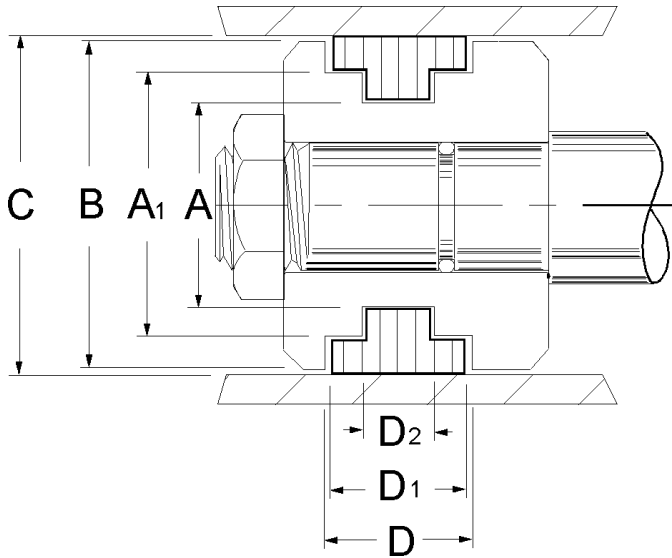


T Shaped Wearbands

Inch Sizes

T-Shaped wearbands are manufactured from glass reinforced nylon and are found in some forklift and telescopic cylinders. They offer space saving advantages by allowing full piston length bearing contact and do not require side lands.



Part Number	Outside Dia. B	Width D	Wall Thick-ness	Price
WBT0162-0437-125-N1-B	1-5/8	7/16	1/8	\$ 3.25
WBT0162-0562-125-N1-B	1-5/8	9/16	1/8	\$ 3.34
WBT0200-0437-125-N1-B	2	7/16	1/8	\$ 3.54
WBT0225-0437-125-N1-B	2-1/4	7/16	1/8	\$ 3.69
WBT0275-0562-125-N1-B	2-3/4	9/16	1/8	\$ 3.60
WBT0300-0562-125-N1-B	3	9/16	1/8	\$ 3.67
WBT0325-0750-125-N1-B	3-1/4	3/4	1/8	\$ 3.79
WBT0400-0562-125-N1-B	4	9/16	1/8	\$ 4.08
WBT0450-0750-125-N1-B	4-1/2	3/4	1/8	\$ 5.13
WBT0550-0750-125-N1-B	5-1/2	3/4	1/8	\$ 5.44
WBT0600-0625-125-N1-B	6	5/8	1/8	\$ 5.65
WBT0650-0750-125-N1-B	6-1/2	3/4	1/8	\$ 5.77
WBT0750-0750-125-N1-B	7-1/2	3/4	1/8	\$ 6.18
WBT0850-0750-125-N1-B	8-1/2	3/4	1/8	\$ 14.04
WBT0975-0750-125-N1-B	9-3/4	3/4	1/8	\$ 20.47

Metric Sizes

F1 style T-Shaped wearbands are manufactured from glass filled Polyamide material and are primarily used in hydraulic cylinders, but may also be used in lubricated pneumatics with steel or cast iron pistons. They offer space saving advantages by allowing full piston length bearing contact and do not require side lands.

Part Number			Groove Dimensions					Gap mm	Price
Prefix	Bore Dia. C mm	Bearing Width D1 mm	Piston Dia. B mm	Groove Dia. A mm	Groove Dia. A1 mm	Groove Width D mm	Groove Width D2 mm		
*F1 -	50	X 9.8	49.6	42.5	46.8	10.5	3.5	3	\$ 7.04
*F1 -	55	X 9.8	54.6	47.5	51.9	10.5	3.5	4	\$ 8.08
*F1 -	60	X 9.8	59.6	52.5	56.9	10.5	3.5	4	\$ 15.82
*F1 -	63	X 14.3	62.5	54	59.5	15	5	5	\$ 8.18
*F1 -	69	X 15.3	68.5	61	66	16	12		\$ 9.74
*F1 -	70	X 14.3	69.5	61	66.5	15	5	5	\$ 11.79
F1 -	80	X 14.3	79.5	71	76.5	15	5	5	\$ 8.82
F1 -	84	X 15.3	83.5	76	81	16	12		\$ 10.58
F1 -	90	X 14.3	89.5	81	86.5	15	5	5	\$ 9.39
F1 -	99	X 15.3	98.5	91	96	16	12		\$ 11.65
F1 -	100	X 14.3	99.4	91	96.5	15	5	8	\$ 9.98
F1 -	110	X 14.3	109.4	101	106.5	15	5	8	\$ 10.76
F1 -	114	X 15.3	113.4	105	110	16	8		\$ 16.79
F1 -	120	X 14.3	119.4	111	116.5	15	5	8	\$ 11.70
F1 -	130	X 14.3	129.4	121	126.5	15	5	8	\$ 17.39
F1 -	134	X 15.3	133.4	125	130	16	8		\$ 19.47
F1 -	140	X 14.3	139.4	131	136.5	15	5	8	\$ 14.10
F1 -	150	X 14.3	149.4	141	146.5	15	5	8	\$ 16.65
F1 -	160	X 19.8	159.3	144	152.9	20.3	8	10	\$ 21.56
F1 -	165	X 24.5	165.3	153	160	25	11		\$ 23.08
F1 -	180	X 19.8	179.3	164	172.9	20.3	8	10	\$ 25.54
F1 -	200	X 19.8	199.3	184	192.9	20.3	8	10	\$ 30.48

*Non-Stock Items - May require larger minimum.