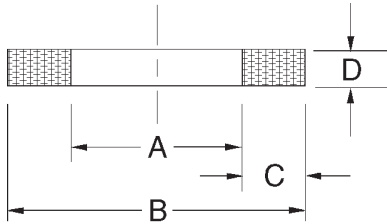


# MS27595 Type Solid TFE Backups



These solid TFE backup rings are machined from virgin TFE to military drawings and are popular in commercial applications requiring low friction, fluid compatibility or high temperature. The solid design is easier to install in larger bore sizes as there are no ends to catch. Prices will be quoted for military applications requiring additional testing and certification.

| Part No.    | Minimum Quantity | Price   |
|-------------|------------------|---------|
| MS27595-004 | 18               | \$ 0.54 |
| MS27595-005 | 18               | \$ 0.55 |
| MS27595-006 | 14               | \$ 0.68 |
| MS27595-007 | 14               | \$ 0.68 |
| MS27595-008 | 14               | \$ 0.68 |
| MS27595-009 | 14               | \$ 0.69 |
| MS27595-010 | 14               | \$ 0.69 |
| MS27595-011 | 14               | \$ 0.70 |
| MS27595-012 | 14               | \$ 0.71 |
| MS27595-013 | 14               | \$ 0.71 |
| MS27595-014 | 13               | \$ 0.76 |
| MS27595-015 | 13               | \$ 0.77 |
| MS27595-016 | 13               | \$ 0.77 |
| MS27595-017 | 13               | \$ 0.78 |
| MS27595-018 | 12               | \$ 0.83 |
| MS27595-019 | 12               | \$ 0.84 |
| MS27595-020 | 11               | \$ 0.85 |
| MS27595-021 | 10               | \$ 0.99 |
| MS27595-022 | 9                | \$ 1.04 |
| MS27595-023 | 9                | \$ 1.04 |
| MS27595-024 | 9                | \$ 1.04 |
| MS27595-025 | 9                | \$ 1.07 |
| MS27595-026 | 9                | \$ 1.08 |
| MS27595-027 | 9                | \$ 1.08 |
| MS27595-028 | 9                | \$ 1.08 |
| MS27595-110 | 13               | \$ 0.72 |
| MS27595-111 | 13               | \$ 0.74 |
| MS27595-112 | 13               | \$ 0.77 |
| MS27595-113 | 13               | \$ 0.77 |
| MS27595-114 | 13               | \$ 0.78 |
| MS27595-115 | 12               | \$ 0.79 |
| MS27595-116 | 11               | \$ 0.87 |
| MS27595-117 | 11               | \$ 0.91 |
| MS27595-118 | 9                | \$ 1.04 |
| MS27595-119 | 9                | \$ 1.04 |
| MS27595-120 | 9                | \$ 1.04 |
| MS27595-121 | 9                | \$ 1.06 |
| MS27595-122 | 9                | \$ 1.08 |
| MS27595-123 | 9                | \$ 1.08 |
| MS27595-124 | 9                | \$ 1.12 |
| MS27595-125 | 9                | \$ 1.13 |
| MS27595-126 | 9                | \$ 1.14 |
| MS27595-127 | 9                | \$ 1.14 |
| MS27595-128 | 9                | \$ 1.16 |
| MS27595-129 | 8                | \$ 1.21 |
| MS27595-130 | 8                | \$ 1.28 |
| MS27595-131 | 8                | \$ 1.29 |

| Part No.    | Minimum Quantity | Price   |
|-------------|------------------|---------|
| MS27595-132 | 7                | \$ 1.40 |
| MS27595-133 | 7                | \$ 1.41 |
| MS27595-134 | 7                | \$ 1.42 |
| MS27595-135 | 7                | \$ 1.47 |
| MS27595-136 | 7                | \$ 1.48 |
| MS27595-137 | 7                | \$ 1.53 |
| MS27595-138 | 6                | \$ 1.70 |
| MS27595-139 | 5                | \$ 1.96 |
| MS27595-140 | 5                | \$ 1.93 |
| MS27595-141 | 5                | \$ 2.14 |
| MS27595-142 | 5                | \$ 2.19 |
| MS27595-143 | 5                | \$ 2.26 |
| MS27595-144 | 5                | \$ 2.33 |
| MS27595-145 | 4                | \$ 2.34 |
| MS27595-146 | 4                | \$ 2.37 |
| MS27595-147 | 4                | \$ 2.40 |
| MS27595-148 | 4                | \$ 2.43 |
| MS27595-149 | 4                | \$ 2.46 |
| MS27595-210 | 11               | \$ 0.86 |
| MS27595-211 | 10               | \$ 0.95 |
| MS27595-212 | 10               | \$ 1.02 |
| MS27595-213 | 9                | \$ 1.09 |
| MS27595-214 | 9                | \$ 1.17 |
| MS27595-215 | 8                | \$ 1.25 |
| MS27595-216 | 8                | \$ 1.32 |
| MS27595-217 | 7                | \$ 1.40 |
| MS27595-218 | 7                | \$ 1.47 |
| MS27595-219 | 7                | \$ 1.55 |
| MS27595-220 | 6                | \$ 1.63 |
| MS27595-221 | 6                | \$ 1.70 |
| MS27595-222 | 6                | \$ 1.77 |
| MS27595-223 | 6                | \$ 1.84 |
| MS27595-224 | 5                | \$ 1.90 |
| MS27595-225 | 5                | \$ 1.96 |
| MS27595-226 | 5                | \$ 2.03 |
| MS27595-227 | 5                | \$ 2.09 |
| MS27595-228 | 5                | \$ 2.15 |
| MS27595-229 | 5                | \$ 2.22 |
| MS27595-230 | 5                | \$ 2.28 |
| MS27595-231 | 4                | \$ 2.34 |
| MS27595-232 | 4                | \$ 2.40 |
| MS27595-233 | 4                | \$ 2.46 |
| MS27595-234 | 4                | \$ 2.54 |
| MS27595-235 | 4                | \$ 2.59 |
| MS27595-236 | 4                | \$ 2.67 |
| MS27595-237 | 4                | \$ 2.73 |
| MS27595-238 | 4                | \$ 2.85 |
| MS27595-239 | 4                | \$ 2.92 |
| MS27595-240 | 4                | \$ 2.98 |
| MS27595-241 | 4                | \$ 3.05 |
| MS27595-242 | 4                | \$ 3.11 |
| MS27595-243 | 3                | \$ 3.17 |
| MS27595-244 | 3                | \$ 3.33 |
| MS27595-245 | 3                | \$ 3.36 |
| MS27595-246 | 3                | \$ 3.42 |
| MS27595-247 | 3                | \$ 3.49 |
| MS27595-248 | 3                | \$ 3.90 |
| MS27595-249 | 3                | \$ 4.14 |
| MS27595-250 | 3                | \$ 4.25 |
| MS27595-251 | 3                | \$ 4.35 |
| MS27595-252 | 3                | \$ 4.47 |
| MS27595-253 | 2                | \$ 4.69 |
| MS27595-254 | 2                | \$ 4.90 |

| Part No.    | Minimum Quantity | Price    |
|-------------|------------------|----------|
| MS27595-255 | 2                | \$ 5.72  |
| MS27595-256 | 2                | \$ 5.95  |
| MS27595-257 | 2                | \$ 6.43  |
| MS27595-258 | 2                | \$ 6.54  |
| MS27595-259 | 2                | \$ 6.77  |
| MS27595-260 | 2                | \$ 7.61  |
| MS27595-325 | 4                | \$ 2.54  |
| MS27595-326 | 4                | \$ 2.64  |
| MS27595-327 | 4                | \$ 2.79  |
| MS27595-328 | 4                | \$ 2.97  |
| MS27595-329 | 3                | \$ 3.19  |
| MS27595-330 | 3                | \$ 3.40  |
| MS27595-331 | 3                | \$ 3.62  |
| MS27595-332 | 3                | \$ 3.83  |
| MS27595-333 | 3                | \$ 3.98  |
| MS27595-334 | 3                | \$ 4.05  |
| MS27595-335 | 3                | \$ 4.19  |
| MS27595-336 | 3                | \$ 4.36  |
| MS27595-337 | 2                | \$ 4.78  |
| MS27595-338 | 2                | \$ 5.03  |
| MS27595-339 | 2                | \$ 5.30  |
| MS27595-340 | 2                | \$ 5.40  |
| MS27595-341 | 2                | \$ 5.44  |
| MS27595-342 | 2                | \$ 5.48  |
| MS27595-343 | 2                | \$ 5.67  |
| MS27595-344 | 2                | \$ 5.85  |
| MS27595-345 | 2                | \$ 6.04  |
| MS27595-346 | 2                | \$ 6.22  |
| MS27595-347 | 2                | \$ 6.39  |
| MS27595-348 | 2                | \$ 6.58  |
| MS27595-349 | 2                | \$ 6.86  |
| MS27595-425 | 1                | \$ 9.90  |
| MS27595-426 | 1                | \$ 11.05 |
| MS27595-427 | 1                | \$ 12.18 |
| MS27595-428 | 1                | \$ 13.70 |
| MS27595-429 | 1                | \$ 14.47 |
| MS27595-430 | 1                | \$ 14.69 |
| MS27595-431 | 1                | \$ 14.85 |
| MS27595-432 | 1                | \$ 15.02 |
| MS27595-433 | 1                | \$ 15.59 |
| MS27595-434 | 1                | \$ 15.61 |
| MS27595-435 | 1                | \$ 15.98 |
| MS27595-436 | 1                | \$ 16.95 |
| MS27595-437 | 1                | \$ 18.01 |
| MS27595-438 | 1                | \$ 19.07 |
| MS27595-439 | 1                | \$ 20.13 |
| MS27595-440 | 1                | \$ 20.65 |
| MS27595-441 | 1                | \$ 21.19 |
| MS27595-442 | 1                | \$ 21.71 |
| MS27595-443 | 1                | \$ 22.25 |
| MS27595-444 | 1                | \$ 22.77 |
| MS27595-445 | 1                | \$ 23.30 |
| MS27595-446 | 1                | \$ 26.48 |
| MS27595-447 | 1                | \$ 29.66 |
| MS27595-448 | 1                | \$ 31.77 |
| MS27595-449 | 1                | \$ 43.43 |
| MS27595-450 | 1                | \$ 45.55 |
| MS27595-451 | 1                | \$ 47.66 |
| MS27595-452 | 1                | \$ 50.84 |
| MS27595-453 | 1                | \$ 52.96 |
| MS27595-454 | 1                | \$ 57.19 |
| MS27595-455 | 1                | \$ 61.44 |
| MS27595-456 | 1                | \$ 69.91 |

MS27595 Solid TFE Backups