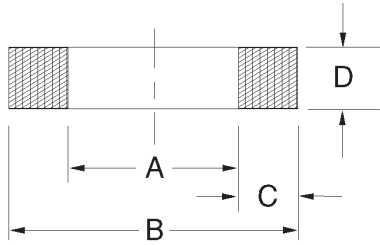


# Modular Backup Rings



Made from 65 D durometer urethane, these devices are designed to absorb shock loads and are used to prevent extrusion of loaded lip seals at high pressure.

Temperature: -65 to 200F

Part Number	Inside Dia. A	Outside Dia. B	Height D	Price
-------------	---------------	----------------	----------	-------

Part Number	Inside Dia. A	Outside Dia. B	Height D	Price
-------------	---------------	----------------	----------	-------

**1/8" CROSS SECTION ("C")**

12500125-MB	1/8	3/8	1/8	\$ 2.94
12500250-MB	1/4	1/2	1/8	\$ 2.94
12500312-MB	5/16	9/16	1/8	\$ 2.94
12500375-MB	3/8	5/8	1/8	\$ 2.94
12500500-MB	1/2	3/4	1/8	\$ 2.94
12500625-MB	5/8	7/8	1/8	\$ 3.00
12500687-MB	11/16	15/16	1/8	\$ 3.05

12500812-MB	13/16	1-1/16	1/8	\$ 3.24
12500937-MB	15/16	1-3/16	1/8	\$ 3.32
12501000-MB	1	1-1/4	1/8	\$ 3.37
12501062-MB	1-1/16	1-5/16	1/8	\$ 3.48
12501250-MB	1-1/4	1-1/2	1/8	\$ 3.70
12501375-MB	1-3/8	1-5/8	1/8	\$ 3.80
12501500-MB	1-1/2	1-3/4	1/8	\$ 3.96

**3/16" CROSS SECTION ("C")**

18700500-MB	1/2	7/8	3/16	\$ 3.05
18700625-MB	5/8	1	3/16	\$ 3.26
18701000-MB	1	1-3/8	3/16	\$ 3.77
18701250-MB	1-1/4	1-5/8	3/16	\$ 4.10
18701312-MB	1-5/16	1-11/16	3/16	\$ 4.21
18701500-MB	1-1/2	1-7/8	3/16	\$ 4.38
18701625-MB	1-5/8	2	3/16	\$ 4.50
18701875-MB	1-7/8	2-1/4	3/16	\$ 4.75
18701937-MB	1-15/16	2-5/16	3/16	\$ 4.81
18702000-MB	2	2-3/8	3/16	\$ 4.87

18702125-MB	2-1/8	2-1/2	3/16	\$ 4.97
18702500-MB	2-1/2	2-7/8	3/16	\$ 5.30
18702625-MB	2-5/8	3	3/16	\$ 5.52
18702750-MB	2-3/4	3-1/8	3/16	\$ 5.77
18703000-MB	3	3-3/8	3/16	\$ 6.10
18703125-MB	3-1/8	3-1/2	3/16	\$ 6.51
18703250-MB	3-1/4	3-5/8	3/16	\$ 6.85
18703500-MB	3-1/2	3-7/8	3/16	\$ 7.62
18703625-MB	3-5/8	4	3/16	\$ 7.99
18703875-MB	3-7/8	4-1/4	3/16	\$ 8.78

**7/32" CROSS SECTION ("C")**

21800750-MB	3/4	1-3/16	7/32	\$ 3.99
-------------	-----	--------	------	---------

**1/4" CROSS SECTION ("C")**

25000353-MB	.353	.853	1/4	\$ 3.99
25000478-MB	.478	.978	1/4	\$ 3.99
25000500-MB	1/2	1	1/4	\$ 3.99
25000625-MB	5/8	1-1/8	1/4	\$ 3.99
25000750-MB	3/4	1-1/4	1/4	\$ 3.99
25000875-MB	7/8	1-3/8	1/4	\$ 4.05
25001000-MB	1	1-1/2	1/4	\$ 4.15
25001062-MB	1-1/16	1-9/16	1/4	\$ 4.21
25001250-MB	1-1/4	1-3/4	1/4	\$ 4.37
25001312-MB	1-5/16	1-13/16	1/4	\$ 4.50
25001375-MB	1-3/8	1-7/8	1/4	\$ 4.71
25001500-MB	1-1/2	2	1/4	\$ 5.04
25001750-MB	1-3/4	2-1/4	1/4	\$ 5.54

25001875-MB	1-7/8	2-3/8	1/4	\$ 5.82
25002000-MB	2	2-1/2	1/4	\$ 6.13
25002250-MB	2-1/4	2-3/4	1/4	\$ 6.76
25002500-MB	2-1/2	3	1/4	\$ 7.41
25002625-MB	2-5/8	3-1/8	1/4	\$ 7.94
25002750-MB	2-3/4	3-1/4	1/4	\$ 8.05
25002875-MB	2-7/8	3-3/8	1/4	\$ 8.36
25003000-MB	3	3-1/2	1/4	\$ 8.66
25003250-MB	3-1/4	3-3/4	1/4	\$ 9.28
25003375-MB	3-3/8	3-7/8	1/4	\$ 9.58
25003500-MB	3-1/2	4	1/4	\$ 9.90
25003750-MB	3-3/4	4-1/4	1/4	\$ 10.54
25004000-MB	4	4-1/2	1/4	\$ 11.16

Modular Backup Rings

**Modular Backup Rings, cont'd.**

Part Number	Inside		Height D	Price
	Dia.	Dia.		
	A	B		

Part Number	Inside		Height D	Price
	Dia.	Dia.		
	A	B		

**1/4" CROSS SECTION ("C")**

25004125-MB	4-1/8	4-5/8	1/4	\$ 11.47
25004250-MB	4-1/4	4-3/4	1/4	\$ 11.76
25004500-MB	4-1/2	5	1/4	\$ 12.42
25005000-MB	5	5-1/2	1/4	\$ 13.67
25005250-187MB	5-1/4	5-3/4	3/16	\$ 14.37
25005250-MB	5-1/4	5-3/4	1/4	\$ 14.37
25005500-MB	5-1/2	6	1/4	\$ 14.91

25006000-MB	6	6-1/2	1/4	\$ 16.21
25007250-MB	7-1/4	7-3/4	1/4	\$ 18.93
25007500-MB	7-1/2	8	1/4	\$ 19.57
25007750-MB	7-3/4	8-1/4	1/4	\$ 20.19
25010000-MB	10	10-1/2	1/4	\$ 26.72
25010750-MB	10-3/4	11-1/4	1/4	\$ 29.02
25013000-MB	13	13-1/2	1/4	\$ 39.57

**9/32" CROSS SECTION ("C")**

28102250-MB	2-1/4	2-13/16	9/32	\$ 6.76
-------------	-------	---------	------	---------

28108000-MB	8	8-9/16	9/32	\$ 17.34
-------------	---	--------	------	----------

**5/16" CROSS SECTION ("C")**

31200353-MB	.353	.978	5/16	\$ 4.53
31200812-MB	13/16	1-7/16	5/16	\$ 4.80
31201250-MB	1-1/4	1-7/8	5/16	\$ 4.97
31201375-MB	1-3/8	2	5/16	\$ 5.46
31201500-MB	1-1/2	2-1/8	5/16	\$ 5.83
31201625-MB	1-5/8	2-1/4	5/16	\$ 6.25
31201750-MB	1-3/4	2-3/8	5/16	\$ 6.56
31201875-MB	1-7/8	2-1/2	5/16	\$ 7.02
31202000-MB	2	2-5/8	5/16	\$ 7.34
31202250-MB	2-1/4	2-7/8	5/16	\$ 8.07
31202312-MB	2-5/16	2-15/16	5/16	\$ 8.29
31202375-MB	2-3/8	3	5/16	\$ 8.48

31202500-MB	2-1/2	3-1/8	5/16	\$ 8.83
31203000-MB	3	3-5/8	5/16	\$ 10.36
31203125-MB	3-1/8	3-3/4	5/16	\$ 10.69
31203500-MB	3-1/2	4-1/8	5/16	\$ 11.97
31203750-MB	3-3/4	4-3/8	5/16	\$ 12.70
31204125-MB	4-1/8	4-3/4	5/16	\$ 14.02
31204250-MB	4-1/4	4-7/8	5/16	\$ 14.85
31204375-MB	4-3/8	5	5/16	\$ 15.83
31204500-MB	4-1/2	5-1/8	5/16	\$ 16.01
31205375-MB	5-3/8	6	5/16	\$ 17.79
31208000-MB	8	8-5/8	5/16	\$ 24.88

**11/32" CROSS SECTION ("C")**

34301312-MB	1-5/16	2	11/32	\$ 7.24
-------------	--------	---	-------	---------

34502000-MB	2	2.690	11/32	\$ 9.90
-------------	---	-------	-------	---------

**3/8" CROSS SECTION ("C")**

37500875-MB	7/8	1-5/8	3/8	\$ 6.30
37501000-MB	1	1-3/4	3/8	\$ 6.39
37501250-MB	1-1/4	2	3/8	\$ 7.05
37501375-MB	1-3/8	2-1/8	3/8	\$ 7.48
37501500-MB	1-1/2	2-1/4	3/8	\$ 7.93
37501625-MB	1-5/8	2-3/8	3/8	\$ 8.51
37501750-MB	1-3/4	2-1/2	3/8	\$ 9.09
37501875-MB	1-7/8	2-5/8	3/8	\$ 9.53
37502000-MB	2	2-3/4	3/8	\$ 9.94
37502250-MB	2-1/4	3	3/8	\$ 11.13
37502375-MB	2-3/8	3-1/8	3/8	\$ 11.59
37502500-MB	2-1/2	3-1/4	3/8	\$ 12.02
37502625-MB	2-5/8	3-3/8	3/8	\$ 12.64
37502750-250MB	2-3/4	3-1/2	1/4	\$ 13.21
37502750-MB	2-3/4	3-1/2	3/8	\$ 13.21
37503000-MB	3	3-3/4	3/8	\$ 14.43
37503125-MB	3-1/8	3-7/8	3/8	\$ 14.85

37503250-MB	3-1/4	4	3/8	\$ 15.27
37503375-MB	3-3/8	4-1/8	3/8	\$ 15.89
37503500-250MB	3-1/2	4-1/4	1/4	\$ 16.45
37503500-MB	3-1/2	4-1/4	3/8	\$ 16.45
37503750-MB	3-3/4	4-1/2	3/8	\$ 17.30
37503875-MB	3-7/8	4-5/8	3/8	\$ 18.01
37504000-MB	4	4-3/4	3/8	\$ 18.48
37504125-MB	4-1/8	4-7/8	3/8	\$ 18.93
37504250-MB	4-1/4	5	3/8	\$ 19.49
37504375-MB	4-3/8	5-1/8	3/8	\$ 19.97
37504500-MB	4-1/2	5-1/4	3/8	\$ 20.52
37504750-MB	4-3/4	5-1/2	3/8	\$ 21.56
37504875-MB	4-7/8	5-5/8	3/8	\$ 22.03
37505000-250MB	5	5-3/4	1/4	\$ 22.59
37505000-MB	5	5-3/4	3/8	\$ 22.59
37505250-MB	5-1/4	6	3/8	\$ 23.74
37505375-MB	5-3/8	6-1/8	3/8	\$ 24.18

Modular Backup Rings

**Modular Backup Rings, cont'd.**

Part Number	Inside Dia.	Outside Dia.	Height	Price
-------------	-------------	--------------	--------	-------

Part Number	Inside Dia.	Outside Dia.	Height	Price
-------------	-------------	--------------	--------	-------

**3/8" CROSS SECTION ("C")**

37505875-MB	5-7/8	6-5/8	3/8	\$ 26.23
37506000-MB	6	6-3/4	3/8	\$ 26.68
37506250-MB	6-1/4	7	3/8	\$ 26.99
37506500-MB	6-1/2	7-1/4	3/8	\$ 27.90
37507000-MB	7	7-3/4	3/8	\$ 29.57
37507250-MB	7-1/4	8	3/8	\$ 30.39
37507500-MB	7-1/2	8-1/4	3/8	\$ 31.30
37507750-MB	7-3/4	8-1/2	3/8	\$ 32.12

37509000-MB	9	9-3/4	3/8	\$ 36.69
37509250-MB	9-1/4	10	3/8	\$ 37.52
37509750-MB	9-3/4	10-1/2	3/8	\$ 39.37
37510000-MB	10	10-3/4	3/8	\$ 40.75
37510500-MB	10-1/2	11-1/4	3/8	\$ 42.10
37511000-MB	11	11-3/4	3/8	\$ 43.91
37511250-MB	11-1/4	12	3/8	\$ 44.87

**7/16" CROSS SECTION ("C")**

43701000-MB	1	1-7/8	7/16	\$ 6.49
43702125-MB	2-1/8	3	7/16	\$ 11.30
43702125-875MB	2-1/8	3	7/8	\$ 12.56
43702250-375MB	2-1/4	3-1/8	3/8	\$ 10.45

43703875-266MB	3-7/8	7-3/4	.266	\$ 19.08
43704750-312MB	4-7/8	5-5/8	5/16	\$ 23.95
43705000-MB	5	5-7/8	7/16	\$ 23.78

**1/2" CROSS SECTION ("C")**

50002000-MB	2	3	1/2	\$ 14.07
50002250-MB	2-1/4	3-1/4	1/2	\$ 15.43
50002375-MB	2-3/8	3-3/8	1/2	\$ 16.14
50002500-MB	2-1/2	3-1/2	1/2	\$ 16.87
50002750-MB	2-3/4	3-3/4	1/2	\$ 18.26
50003000-MB	3	4	1/2	\$ 19.62
50003500-MB	3-1/2	4-1/2	1/2	\$ 22.27
50004000-MB	4	5	1/2	\$ 25.23
50004250-MB	4-1/4	5-1/4	1/2	\$ 26.62
50004500-MB	4-1/2	5-1/2	1/2	\$ 27.98
50005000-MB	5	6	1/2	\$ 30.79
50005250-MB	5-1/4	6-1/4	1/2	\$ 31.46
50005500-MB	5-1/2	6-1/2	1/2	\$ 33.42
50006000-MB	6	7	1/2	\$ 35.13
50006500-MB	6-1/2	7-1/2	1/2	\$ 36.23
50006750-MB	6-3/4	7-3/4	1/2	\$ 37.03

50007000-MB	7	8	1/2	\$ 37.89
50007250-MB	7-1/4	8-1/4	1/2	\$ 38.75
50008000-MB	8	9	1/2	\$ 42.27
50008500-MB	8-1/2	9-1/2	1/2	\$ 44.66
50009000-MB	9	10	1/2	\$ 47.04
50009500-MB	9-1/2	10-1/2	1/2	\$ 49.60
50010000-MB	10	11	1/2	\$ 52.21
50010500-MB	10-1/2	11-1/2	1/2	\$ 54.73
50011500-MB	11-1/2	12-1/2	1/2	\$ 59.81
50012000-MB	12	13	1/2	\$ 62.36
50013500-MB	13-1/2	14-1/2	1/2	\$ 81.11
50015000-MB	15	16	1/2	\$ 98.47
50017000-MB	17	18	1/2	\$ 106.30
50019000-MB	19	20	1/2	\$ 117.64
50021000-MB	21	22	1/2	\$ 129.32
50029000-MB	29	30	1/2	\$ 351.56

**5/8" CROSS SECTION ("C")**

62502000-MB	2	3-1/4	5/8	\$ 17.18
62502500-MB	2-1/2	3-3/4	5/8	\$ 20.33
62502750-MB	2-3/4	4	5/8	\$ 21.98
62503000-MB	3	4-1/4	5/8	\$ 23.34
62503250-MB	3-1/4	4-1/2	5/8	\$ 24.75
62504625-MB	4-5/8	5-7/8	5/8	\$ 33.69

62504750-MB	4-3/4	6	5/8	\$ 34.32
62506750-MB	6-3/4	8	5/8	\$ 48.38
62507000-MB	7	8-1/4	5/8	\$ 49.90
62512750-MB	12-3/4	14	5/8	\$ 98.56
62530000-MB	30	31-1/4	5/8	\$ 463.64

**3/4" CROSS SECTION ("C")**

75006500-MB	6-1/2	8	3/4	\$ 53.63
75007500-MB	7-1/2	9	3/4	\$ 61.14
75008000-MB	8	9-1/2	3/4	\$ 64.89

75008500-MB	8-1/2	10	3/4	\$ 68.50
75009812-MB	9-13/16	11-5/16	3/4	\$ 78.67

**7/8" CROSS SECTION ("C")**

87536000-MB	36	37-3/4	7/8	\$ 1,145.66
-------------	----	--------	-----	-------------

**1" CROSS SECTION ("C")**

100030000-MB	30	32	1	\$ 826.39
--------------	----	----	---	-----------