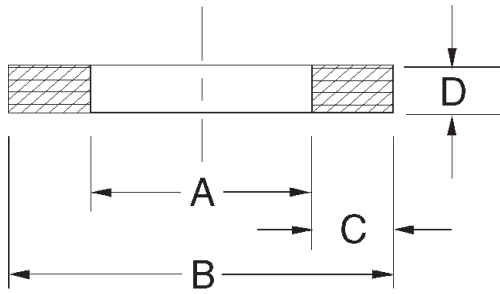


# Metric Hytrel Backup Rings



Made from 55 shore D hytrel, these rings are extremely resistant to extrusion, compatible with water and petroleum based fluids, and can be used at temperatures to 275 degrees ° F. Unlike TFE, they can be stretched over larger diameters and will return quickly to their original size.

Temperature: -40 to 275F

Prefix	Part Number			Minimum Quantity	Price
	Inside Dia. A mm	Outside Dia. B mm	Thickness D mm		
MBH	- 10	X 14	X 1.2	4	\$ 2.41
MBH	- 12	X 16	X 1.2	4	\$ 2.47
MBH	- 14	X 18	X 1.2	4	\$ 2.53
MBH	- 15	X 19	X 1.2	4	\$ 2.58
MBH	- 16	X 20	X 1.2	4	\$ 2.63
MBH	- 20	X 24	X 1.3	4	\$ 2.76
MBH	- 20	X 25	X 1.5	4	\$ 2.95
MBH	- 22	X 30	X 1.5	3	\$ 3.36
MBH	- 25	X 30	X 1.5	4	\$ 3.00
MBH	- 25	X 33	X 1.5	3	\$ 3.40
MBH	- 30	X 35	X 1.5	4	\$ 3.05
MBH	- 30	X 40	X 1.5	3	\$ 3.42
MBH	- 35	X 40	X 1.5	4	\$ 3.08
MBH	- 35	X 45	X 1.5	3	\$ 3.52
MBH	- 35.5	X 45	X 1.5	3	\$ 3.52
MBH	- 38	X 50	X 1.5	3	\$ 3.89
MBH	- 39	X 45	X 1.5	3	\$ 3.78
MBH	- 40	X 45	X 1.5	3	\$ 3.12
MBH	- 40	X 50	X 1.5	3	\$ 3.63
MBH	- 40	X 53	X 2	3	\$ 4.49
MBH	- 42	X 55	X 2	3	\$ 4.58
MBH	- 44	X 50	X 1.5	2	\$ 5.82
MBH	- 45	X 50	X 1.5	3	\$ 3.16
MBH	- 45	X 55	X 1.5	3	\$ 3.74
MBH	- 49	X 55	X 1.5	2	\$ 5.06
MBH	- 50	X 55	X 1.5	3	\$ 3.19
MBH	- 50	X 60	X 1.5	3	\$ 3.87
MBH	- 50	X 63	X 2	2	\$ 5.23
MBH	- 50	X 65	X 2.5	2	\$ 5.38
MBH	- 53	X 63	X 1.5	3	\$ 3.95
MBH	- 55	X 60	X 1.5	3	\$ 3.26
MBH	- 55	X 65	X 1.5	3	\$ 4.01
MBH	- 55	X 70	X 2.5	2	\$ 5.54
MBH	- 56	X 66	X 1.5	3	\$ 4.07
MBH	- 58	X 63	X 1.5	3	\$ 3.29
MBH	- 60	X 65	X 1.5	3	\$ 3.31
MBH	- 60	X 70	X 1.5	3	\$ 4.14
MBH	- 60	X 73	X 3	2	\$ 5.73
MBH	- 60	X 75	X 2.5	2	\$ 5.73
MBH	- 65	X 70	X 1.5	3	\$ 3.36
MBH	- 65	X 75	X 2	3	\$ 4.27
MBH	- 65	X 78	X 3	2	\$ 5.90
MBH	- 65	X 80	X 2.5	2	\$ 5.90
MBH	- 70	X 75	X 1.5	3	\$ 3.44
MBH	- 70	X 80	X 2	3	\$ 4.40
MBH	- 70	X 83	X 3	2	\$ 6.09

Prefix	Part Number			Minimum Quantity	Price
	Inside Dia. A mm	Outside Dia. B mm	Thickness D mm		
MBH	- 70	X 85	X 2.5	2	\$ 6.09
MBH	- 75	X 80	X 1.5	3	\$ 3.52
MBH	- 75	X 85	X 2	3	\$ 4.54
MBH	- 75	X 88	X 3	2	\$ 6.26
MBH	- 75	X 90	X 2.5	2	\$ 6.26
MBH	- 80	X 85	X 1.5	3	\$ 3.61
MBH	- 80	X 90	X 2	2	\$ 4.67
MBH	- 80	X 93	X 3	2	\$ 6.43
MBH	- 80	X 95	X 2.5	2	\$ 6.43
MBH	- 80	X 100	X 3	1	\$ 10.35
MBH	- 85	X 90	X 1.5	3	\$ 3.66
MBH	- 85	X 95	X 2	2	\$ 4.78
MBH	- 85	X 100	X 2.5	2	\$ 6.64
MBH	- 90	X 95	X 1.5	3	\$ 3.74
MBH	- 90	X 100	X 2	2	\$ 4.89
MBH	- 90	X 105	X 2.5	2	\$ 6.83
MBH	- 90	X 110	X 3	1	\$ 10.88
MBH	- 95	X 100	X 1.5	3	\$ 3.83
MBH	- 95	X 105	X 2	2	\$ 5.02
MBH	- 95	X 110	X 2.5	2	\$ 7.04
MBH	- 95	X 115	X 3	1	\$ 11.13
MBH	- 100	X 105	X 1.5	3	\$ 3.93
MBH	- 100	X 110	X 2	2	\$ 5.12
MBH	- 100	X 115	X 2.5	2	\$ 7.27
MBH	- 100	X 120	X 3	1	\$ 11.41
MBH	- 105	X 110	X 1.5	3	\$ 4.02
MBH	- 105	X 115	X 2	2	\$ 5.24
MBH	- 105	X 120	X 2.5	2	\$ 7.46
MBH	- 105	X 125	X 3	1	\$ 11.69
MBH	- 110	X 115	X 1.5	3	\$ 4.12
MBH	- 110	X 120	X 2	2	\$ 5.34
MBH	- 110	X 125	X 2.5	2	\$ 7.69
MBH	- 110	X 130	X 3	1	\$ 11.99
MBH	- 115	X 120	X 1.5	3	\$ 4.21
MBH	- 115	X 125	X 2	2	\$ 5.46
MBH	- 120	X 125	X 1.5	3	\$ 4.33
MBH	- 120	X 130	X 2	2	\$ 5.60
MBH	- 120	X 135	X 2.5	2	\$ 8.42
MBH	- 120	X 140	X 3	1	\$ 12.57
MBH	- 125	X 130	X 1.5	3	\$ 4.44
MBH	- 125	X 135	X 2	2	\$ 5.72
MBH	- 125	X 140	X 2.5	2	\$ 8.56
MBH	- 130	X 135	X 1.5	3	\$ 4.56
MBH	- 130	X 140	X 2	2	\$ 5.86
MBH	- 130	X 145	X 2.75	2	\$ 8.85
MBH	- 130	X 150	X 3	1	\$ 13.15

Metric Hytrel Backup Rings

**Metric Hytrel Backup Rings, Cont'd.**

Prefix	Part Number			Minimum Quantity	Price
	Inside Dia. A m m	Outside Dia. B m m	Thickness D m m		
MBH	- 135	X 140	X 1.5	2	\$ 4.67
MBH	- 135	X 145	X 2	2	\$ 6.00
MBH	- 135	X 150	X 2.75	2	\$ 9.15
MBH	- 140	X 145	X 1.5	2	\$ 4.67
MBH	- 140	X 150	X 2	2	\$ 6.12
MBH	- 140	X 155	X 2.5	1	\$ 9.44
MBH	- 140	X 160	X 3	1	\$ 13.74
MBH	- 145	X 150	X 1.5	2	\$ 4.91
MBH	- 145	X 155	X 2	2	\$ 6.26
MBH	- 145	X 160	X 2.75	1	\$ 9.81
MBH	- 150	X 160	X 2	2	\$ 6.38
MBH	- 150	X 165	X 2.75	1	\$ 10.18
MBH	- 150	X 170	X 3	1	\$ 14.36
MBH	- 155	X 165	X 2	2	\$ 6.52
MBH	- 155	X 170	X 2	1	\$ 10.54
MBH	- 160	X 170	X 2	2	\$ 6.66
MBH	- 160	X 175	X 2.75	1	\$ 10.77
MBH	- 160	X 180	X 3	1	\$ 15.04
MBH	- 165	X 175	X 2	2	\$ 6.78
MBH	- 165	X 180	X 2	1	\$ 11.00
MBH	- 170	X 180	X 2	2	\$ 6.94
MBH	- 170	X 185	X 2	1	\$ 11.24
MBH	- 175	X 185	X 2	2	\$ 7.07
MBH	- 175	X 190	X 2	1	\$ 11.49

Prefix	Part Number			Minimum Quantity	Price
	Inside Dia. A m m	Outside Dia. B m m	Thickness D m m		
MBH	- 180	X 190	X 2	2	\$ 7.23
MBH	- 180	X 195	X 2.75	1	\$ 11.86
MBH	- 180	X 200	X 3	1	\$ 16.79
MBH	- 185	X 195	X 2	2	\$ 7.37
MBH	- 185	X 200	X 2.75	1	\$ 12.03
MBH	- 190	X 200	X 2	2	\$ 7.51
MBH	- 190	X 205	X 2	1	\$ 12.39
MBH	- 200	X 210	X 2	2	\$ 7.85
MBH	- 200	X 215	X 2	1	\$ 12.67
MBH	- 205	X 220	X 2.75	1	\$ 12.95
MBH	- 210	X 220	X 2	2	\$ 8.19
MBH	- 210	X 225	X 2.5	1	\$ 13.34
MBH	- 220	X 230	X 2	2	\$ 8.56
MBH	- 225	X 240	X 2.5	1	\$ 13.78
MBH	- 230	X 240	X 2	2	\$ 8.89
MBH	- 235	X 250	X 2.75	1	\$ 14.65
MBH	- 240	X 250	X 2	2	\$ 9.26
MBH	- 245	X 260	X 2.75	1	\$ 15.24
MBH	- 250	X 260	X 2	1	\$ 9.60
MBH	- 260	X 270	X 2	1	\$ 9.96
MBH	- 265	X 280	X 2.75	1	\$ 17.83
MBH	- 270	X 280	X 2	1	\$ 10.32
MBH	- 280	X 290	X 2	1	\$ 10.67
MBH	- 290	X 300	X 2	1	\$ 11.01

Metric Hytrel Backup Rings

***Looking for leather?***

***Call us for leather backup rings,***

***leather piston cups,***

***leather u-cups,***

***leather hat packings,***

***and custom leather seals.***