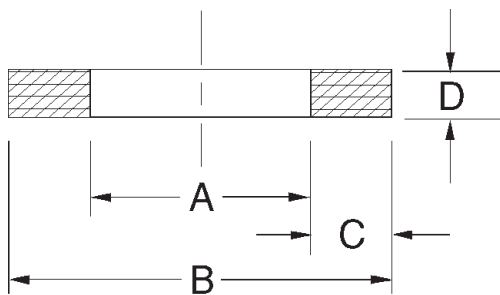


# 8700 Type Hytrel Backup Rings



These Hytrel rings are used normally to backup 8400 series u-cups. They are highly extrusion resistant and are compatible with water and petroleum based fluids up to temperatures of 275 ° F. Unlike TFE, they can be stretched over larger diameters and will quickly return to their original size.

Temperature: -40 to 275F

Part Number	Inside Dia. A	Outside Dia. B	Thickness D	Minimum Quantity	Price
8703-0031	5/16	1/2	1/16	11	\$ 0.95
8704-0037	3/8	5/8	1/16	11	\$ 0.97
8704-0050	1/2	3/4	1/16	11	\$ 0.97
8704-0062	5/8	7/8	1/16	11	\$ 0.99
8708-0062	5/8	1-1/8	1/16	7	\$ 1.48
8704-0075	3/4	1	1/16	11	\$ 1.02
8704-0087	7/8	1-1/8	1/16	10	\$ 1.04
8704-0100	1	1-1/4	1/16	10	\$ 1.06
8705-0100	1	1-5/16	1/16	9	\$ 1.27
8705-0118	1-3/16	1-1/2	1/16	8	\$ 1.32
8705-0121	1-9/32	1-17/32	1/16	8	\$ 1.32
8704-0125	1-1/4	1-1/2	1/16	9	\$ 1.17
8708-0125	1-1/4	1-3/4	1/16	6	\$ 1.78
8705-0137	1-3/8	1-11/16	1/16	8	\$ 1.36
8706-0137	1-3/8	1-3/4	1/16	7	\$ 1.57
8705-0150	1-1/2	1-13/16	1/16	8	\$ 1.39
8706-0150	1-1/2	1-7/8	1/16	7	\$ 1.59
8708-0150	1-1/2	2	1/16	6	\$ 1.87
8706-0162	1-5/8	2	1/16	7	\$ 1.64
8706-0165	1-21/32	2-1/32	1/16	7	\$ 1.64
8706-0175	1-3/4	2-1/8	1/16	7	\$ 1.71
8708-0175	1-3/4	2-1/4	1/16	6	\$ 1.84
8706-0200	2	2-3/8	1/16	6	\$ 1.80
8708-0200	2	2-1/2	1/16	5	\$ 2.08
8706-0212	2-1/8	2-1/2	1/16	6	\$ 1.85
8706-0215	2-5/32	2-17/32	1/16	6	\$ 1.92
8707-0250	2-1/2	2-15/16	1/16	5	\$ 2.10

Part Number	Inside Dia. A	Outside Dia. B	Thickness D	Minimum Quantity	Price
8707-0281	2-13/16	3-1/4	1/16	5	\$ 2.19
8707-0284	2-27/32	3-9/32	1/16	5	\$ 2.26
8707-0300	3	3-7/16	1/16	5	\$ 2.26
8708-0350	3-1/2	4	1/16	3	\$ 3.53
8709-0446	4-15/32	5-1/32	1/16	3	\$ 4.23
8708-0450	4-1/2	5	1/16	3	\$ 3.86
8709-0500	5	5-9/16	1/16	3	\$ 4.44
8710-0537	5-3/8	6	1/16	3	\$ 4.53
8710-0540	5-13/32	6-1/32	1/16	3	\$ 4.60
8709-0543	5-7/16	6	1/16	3	\$ 4.80
8710-0550	5-1/2	6-1/8	1/16	3	\$ 4.60
8709-0593	5-15/16	6-1/2	1/16	2	\$ 5.20
8710-0637	6-3/8	7	1/16	1	\$ 20.07
8710-0640	6-13/32	7-1/32	1/16	1	\$ 21.68
8709-0643	6-7/16	7	1/16	1	\$ 21.82
8710-0700	7	7-5/8	1/16	1	\$ 21.68
8710-0737	7-3/8	8	1/16	1	\$ 22.01
8710-0740	7-13/32	8-1/32	1/16	1	\$ 22.01
8712-0800	8	8-3/4	1/16	1	\$ 27.56
8710-0850	8-1/2	9-1/8	1/16	1	\$ 24.49
8711-0931	9-5/16	10	1/16	1	\$ 29.59
8711-0934	9-11/32	10-1/32	1/16	1	\$ 30.82
8712-1000	10	10-3/4	1/16	1	\$ 31.09
8716-1100	11	12	1/16	1	\$ 39.09
8716-1103	11-1/32	12-1/32	1/16	1	\$ 39.09
8712-1125	11-1/4	12	1/16	1	\$ 33.60
8713-1318	13-3/16	14	1/16	1	\$ 37.50

8700 Type Hytrel Backups

*We specialize in metric seals!*